

**Ferrari**



**365**  
**GT4/2+2**

## List of tables

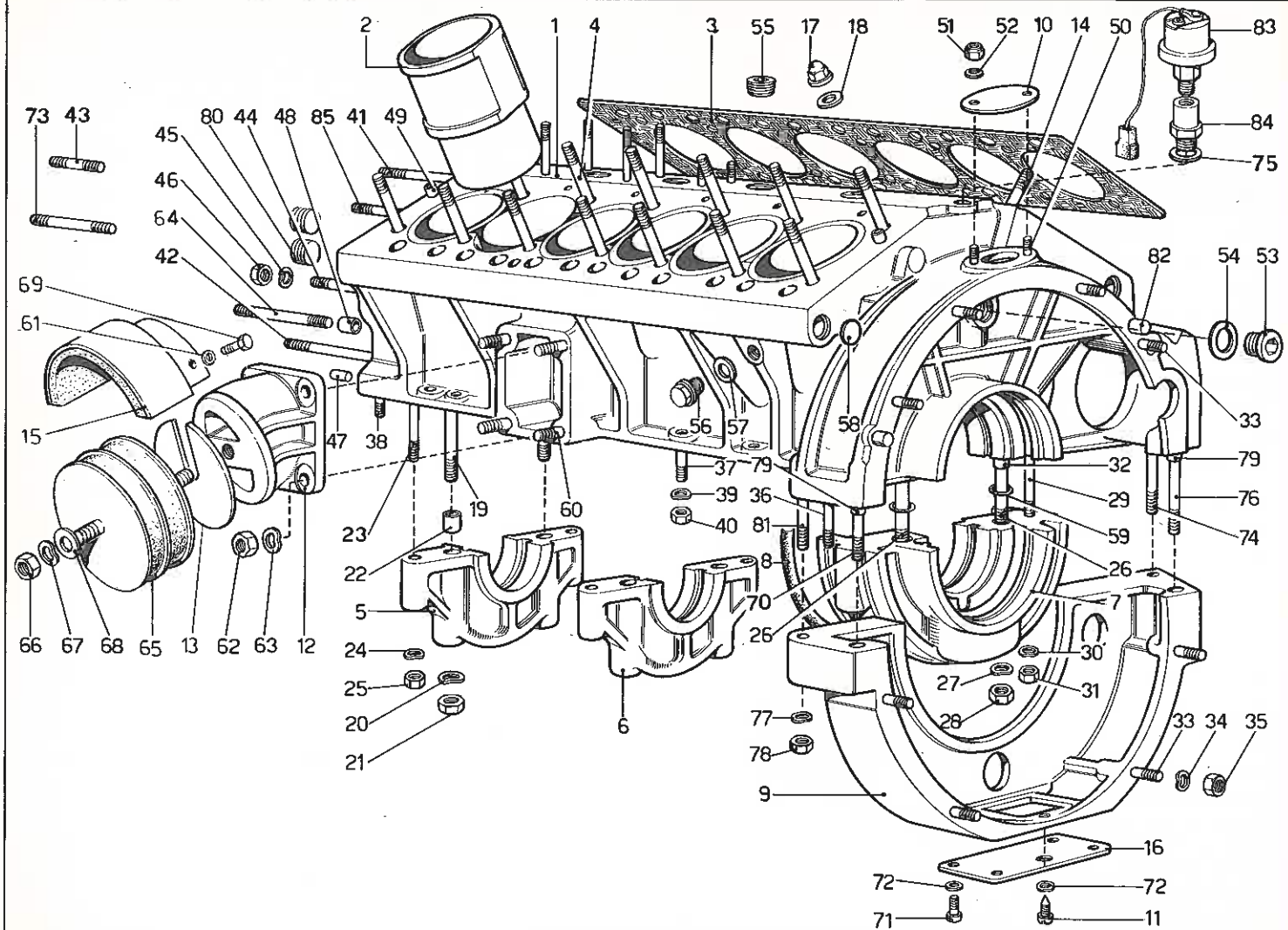
**Table 1** - Crankcase  
**Table 2** - Oil sump  
**Table 3** - Crankshaft, connecting rods and pistons  
**Table 4** - Cylinder head (Right)  
**Table 5** - Cylinder head (Left)  
**Table 6** - Valve gear  
**Table 7** - Camshaft drive  
**Table 8** - Fuel pumps and fuel pipes  
**Table 9** - Fuel tanks and piping  
**Table 10** - Air filters  
**Table 11** - Weber 38 DCOE 59/60 carburettor  
**Table 12** - Throttle control  
**Table 13** - Blow-By  
**Table 14** - Exhaust manifold and piping  
**Table 15** - Lubrication system  
**Table 16** - Oil filters  
**Table 17** - Oil and water pumps  
**Table 18** - Cooling system  
**Table 19** - Clutch and controls  
**Table 20** - Pedal board - Clutch control  
**Table 21** - Gear box  
**Table 22** - Main shaft gears  
**Table 23** - Lay shaft gears (front end)  
**Table 24** - Lay shaft gears (rear end)  
**Table 25** - Gear shift outer and inner controls  
**Table 26** - Transmission shaft

**Table 27** - Differential casing  
**Table 28** - Differential and axle shafts  
**Table 29** - Brake hydraulic system  
**Table 30** - Brake booster vacuum pump  
**Table 31** - Brake hydraulic system on wheels  
**Table 32** - Calipers for front and rear  
**Table 33** - Handbrake control  
**Table 34** - Power steering  
**Table 35** - Steering linkage  
**Table 36** - Steering column  
**Table 37** - Front suspension - Shock absorber  
**Table 38** - Front suspension - Wishbones  
**Table 39** - Rear suspension and brake disc  
**Table 40** - Rear suspension - Wishbones  
**Table 41** - Rear suspension - Shock absorber and self - levelling unit  
**Table 42** - Wheels  
**Table 43** - Engine ignition  
**Table 44** - Current generating system - Starter motor  
**Table 45** - Air conditioning system  
**Table 46** - Tool - Kit

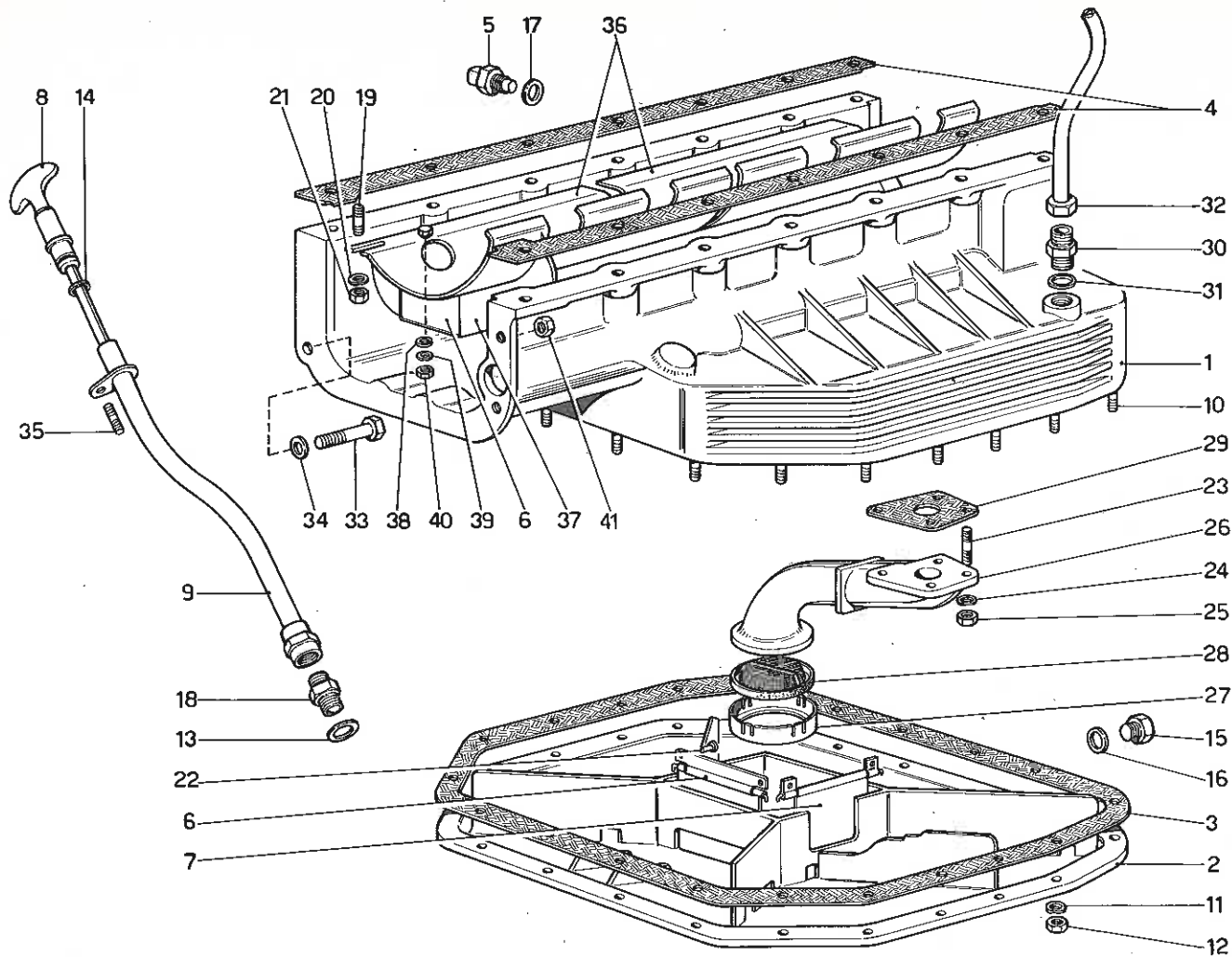
### VARIANTS FOR RHD VERSION

**Table 47** - Throttle control  
**Table 48** - Pedal board - Clutch control  
**Table 49** - Brake hydraulic system

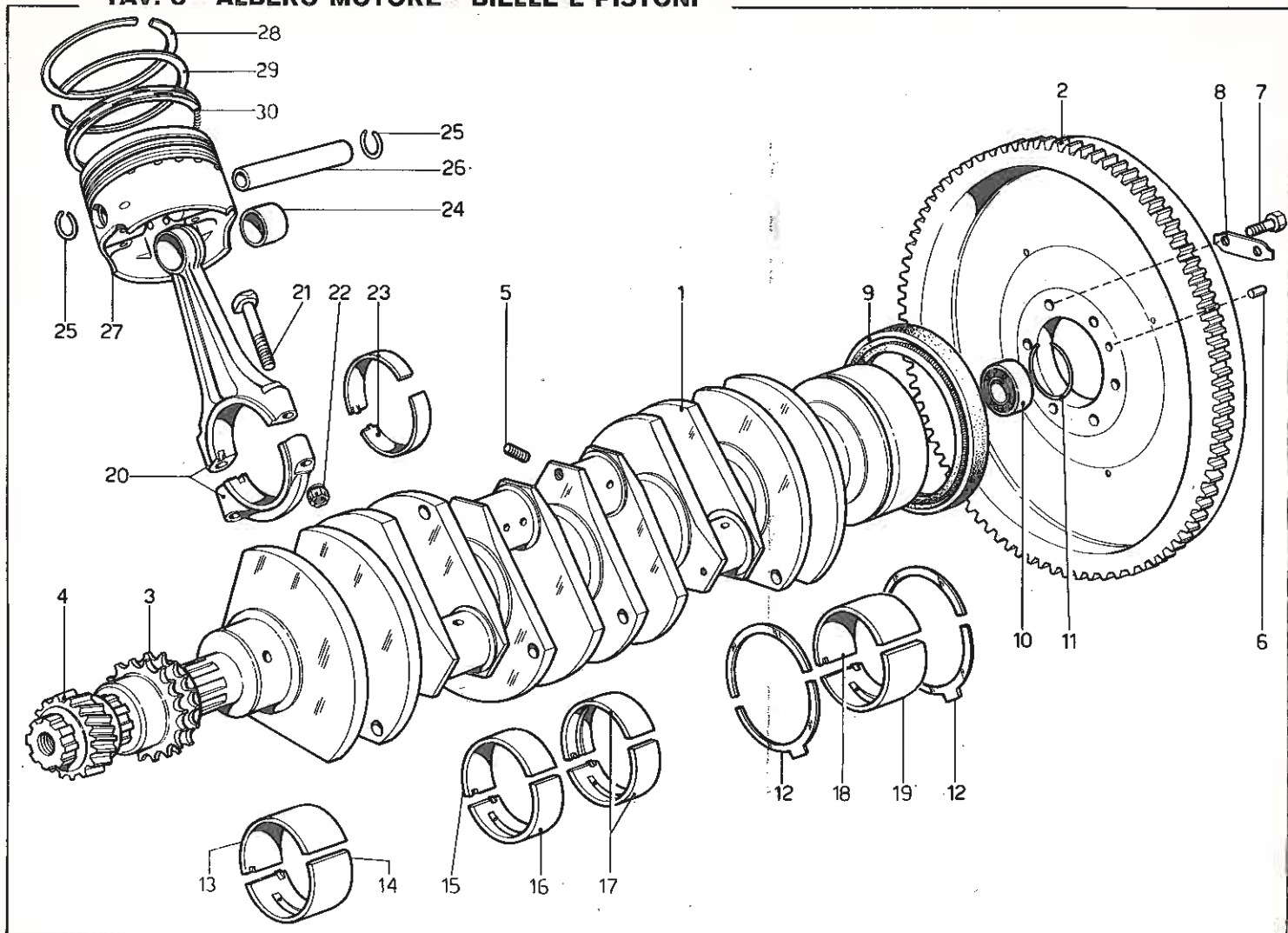
# TAV. 1 - BASAMENTO



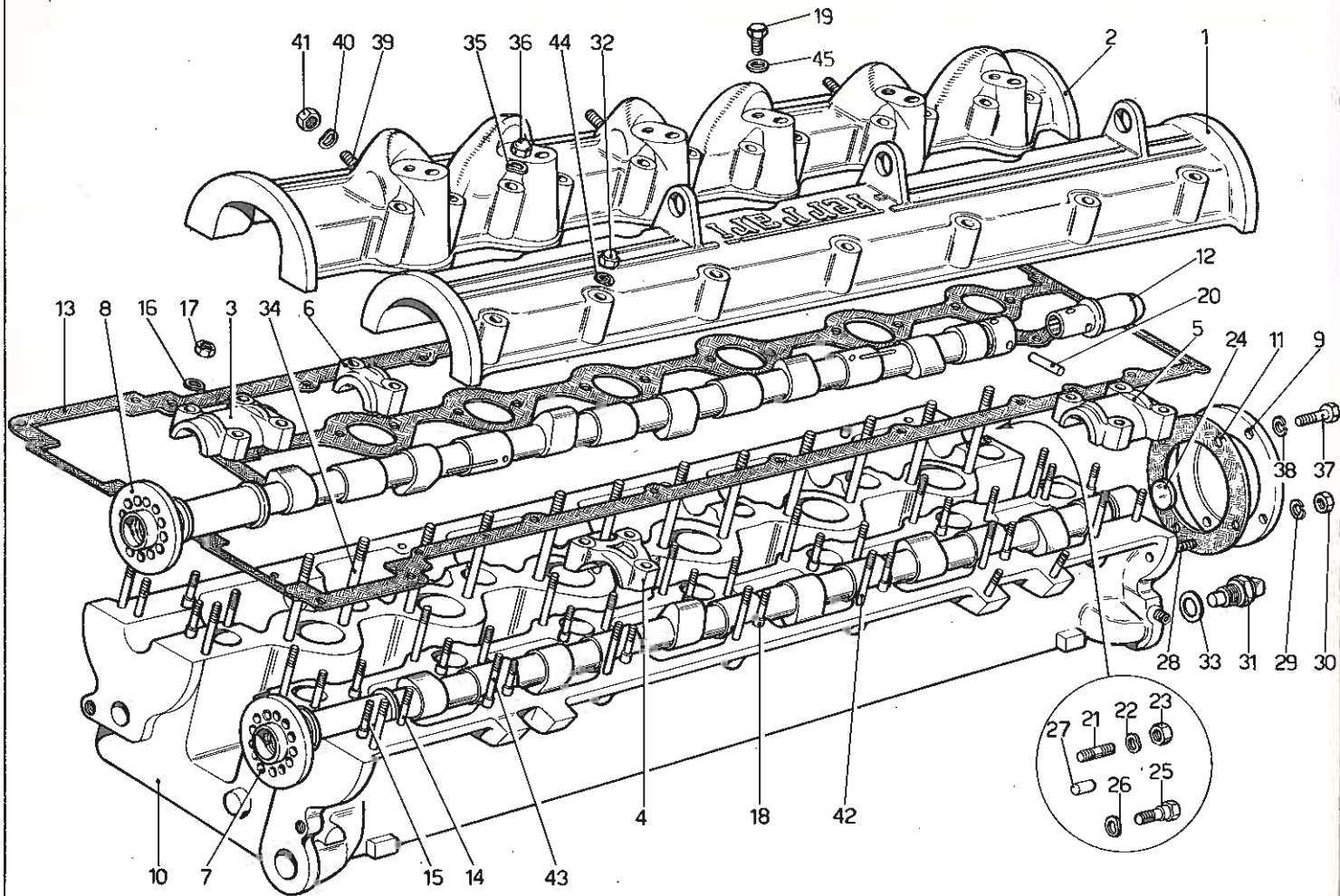
# TAV. 2 - COPPA OLIO



TAV. 3 - ALBERO MOTORE - BIELLE E PISTONI

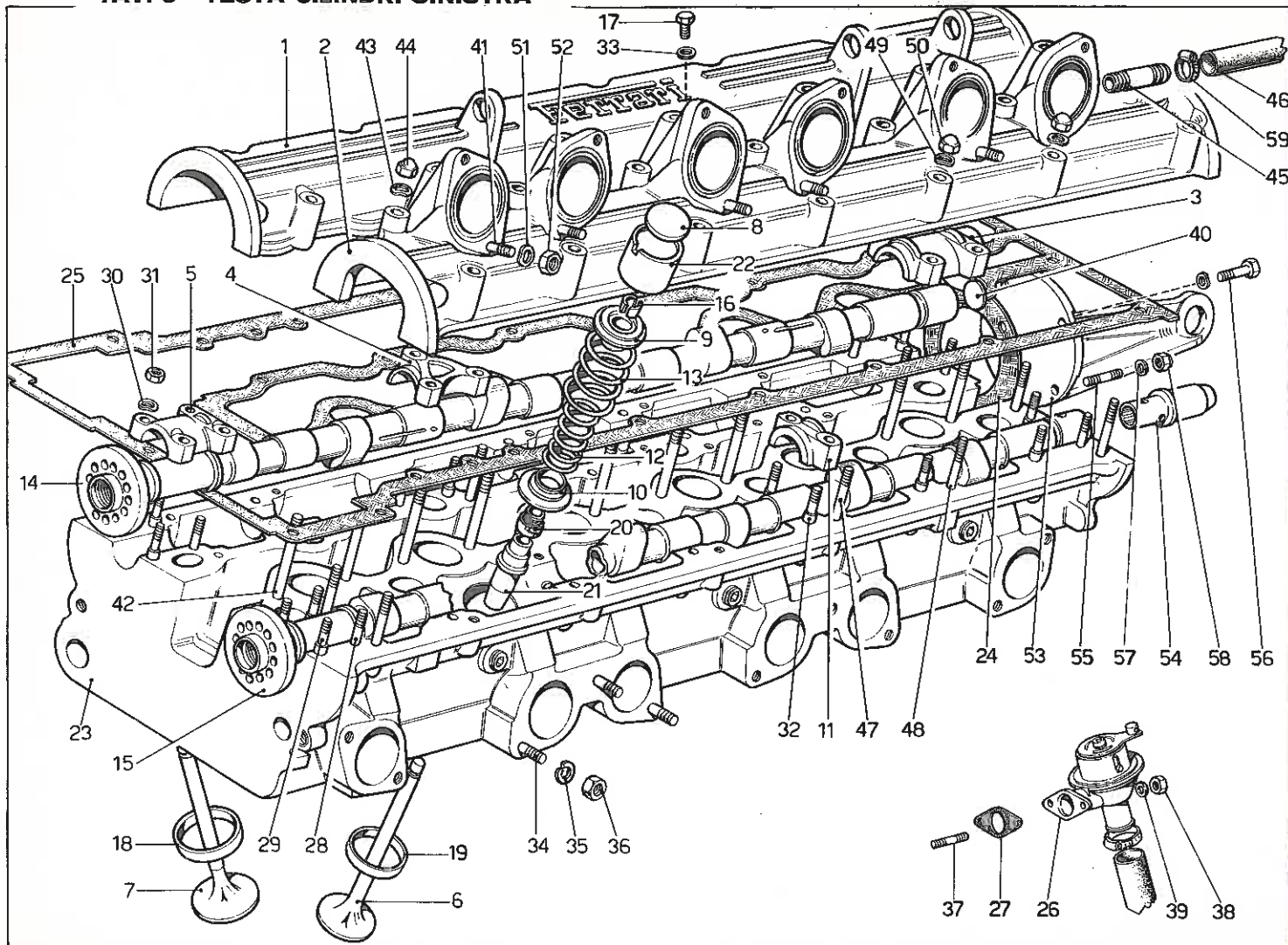


# TAV. 4 - TESTA CILINDRI DESTRA

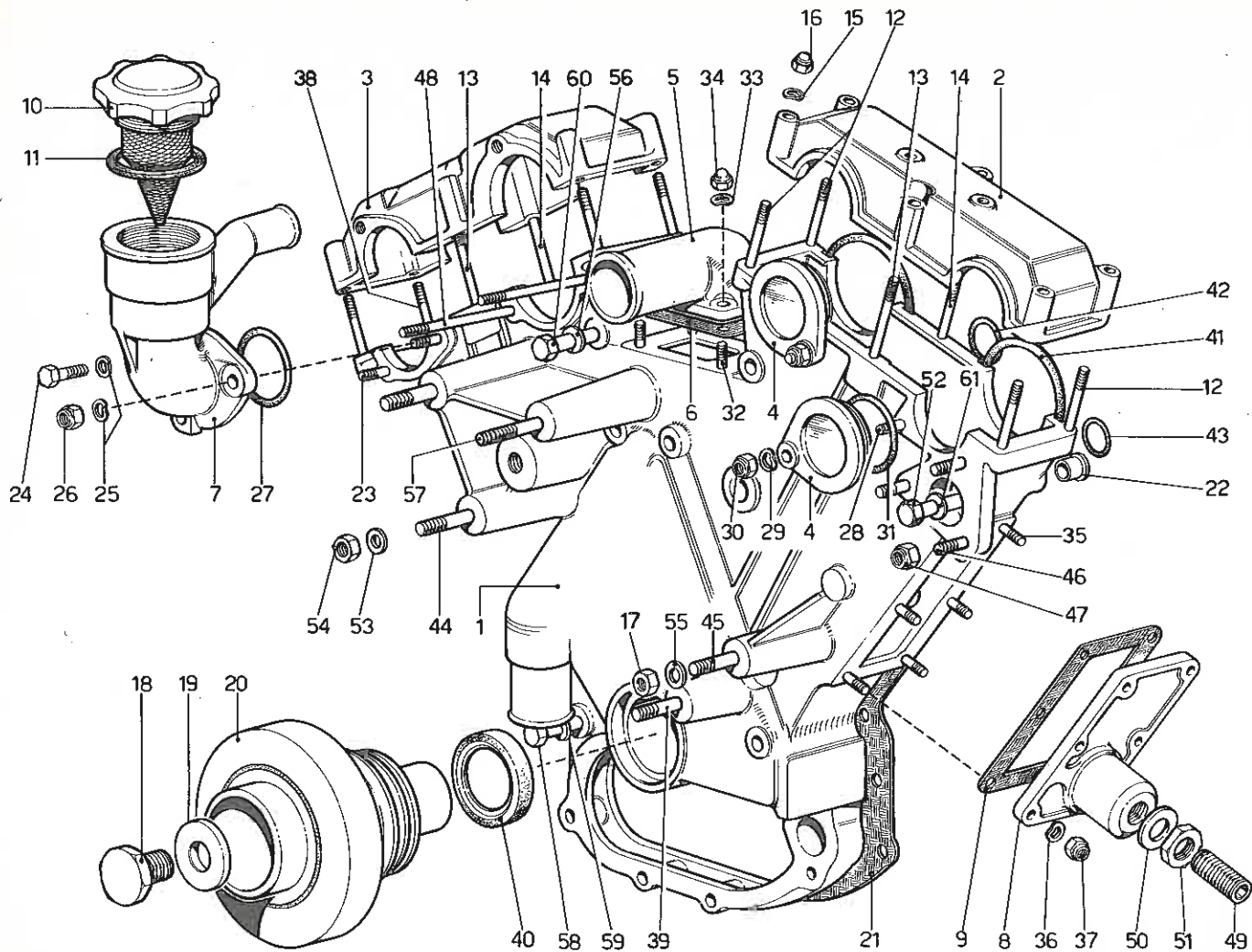




# TAV. 5 - TESTA CILINDRI SINISTRA

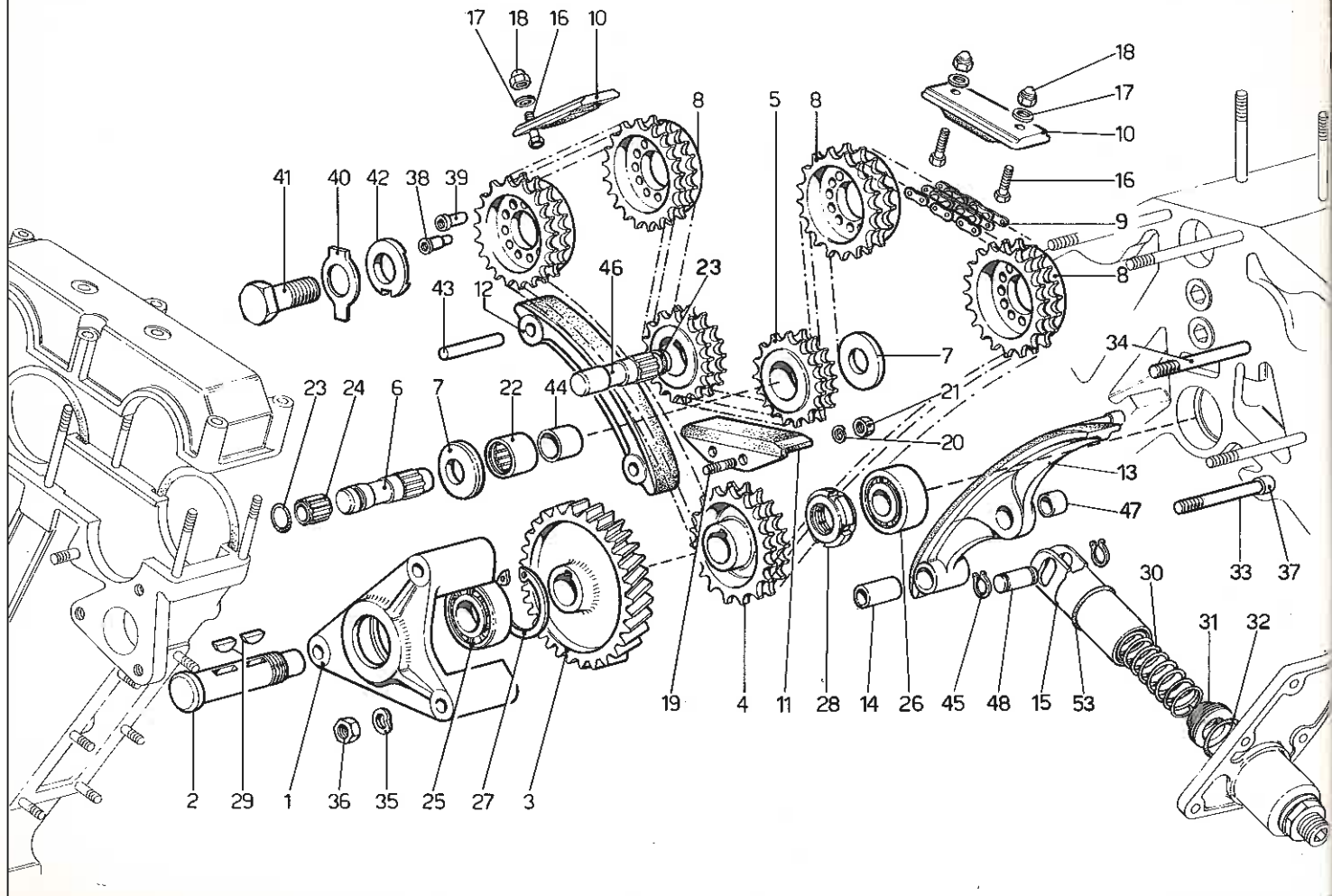


# TAV. 6 - DISTRIBUZIONE

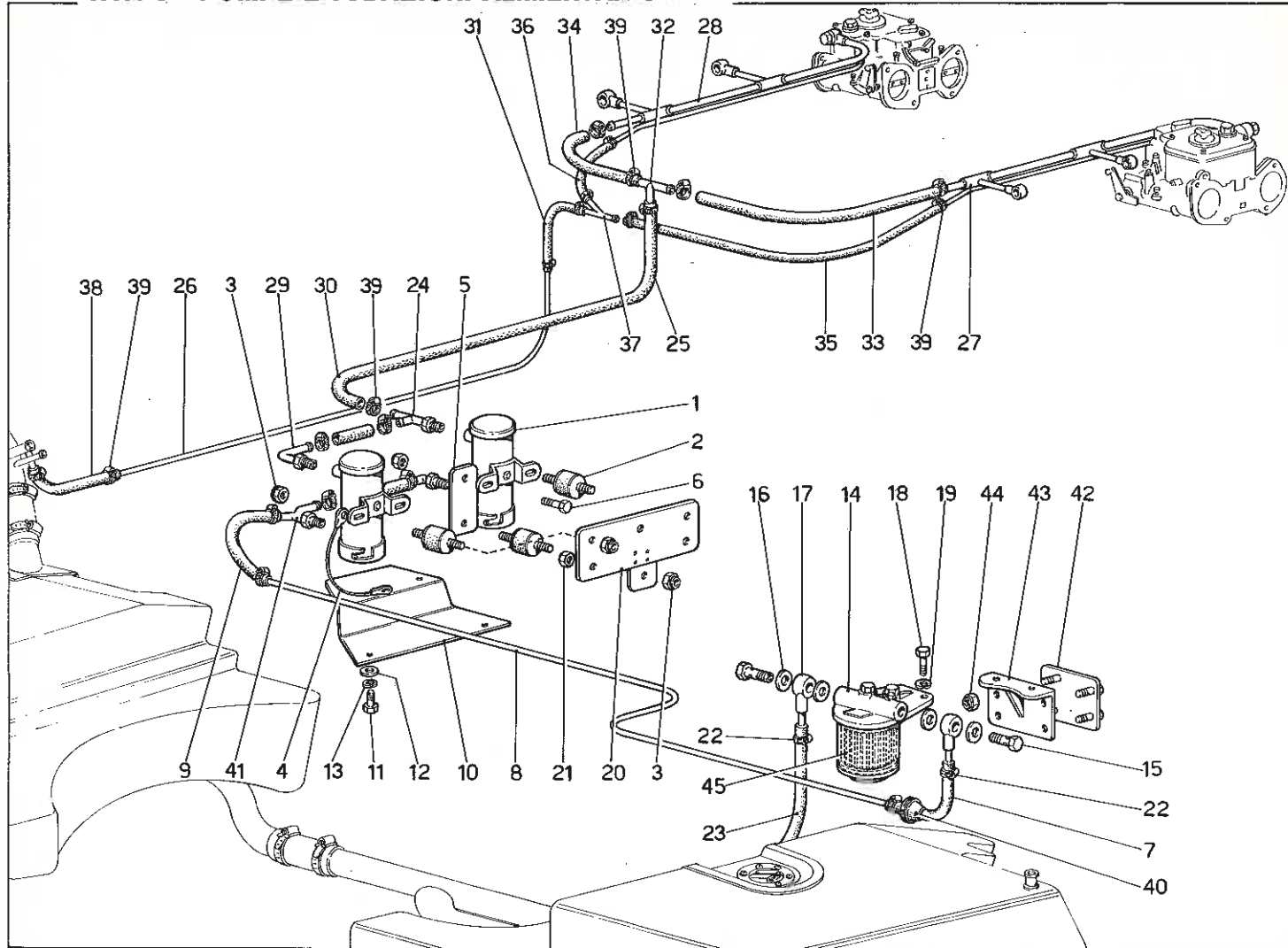




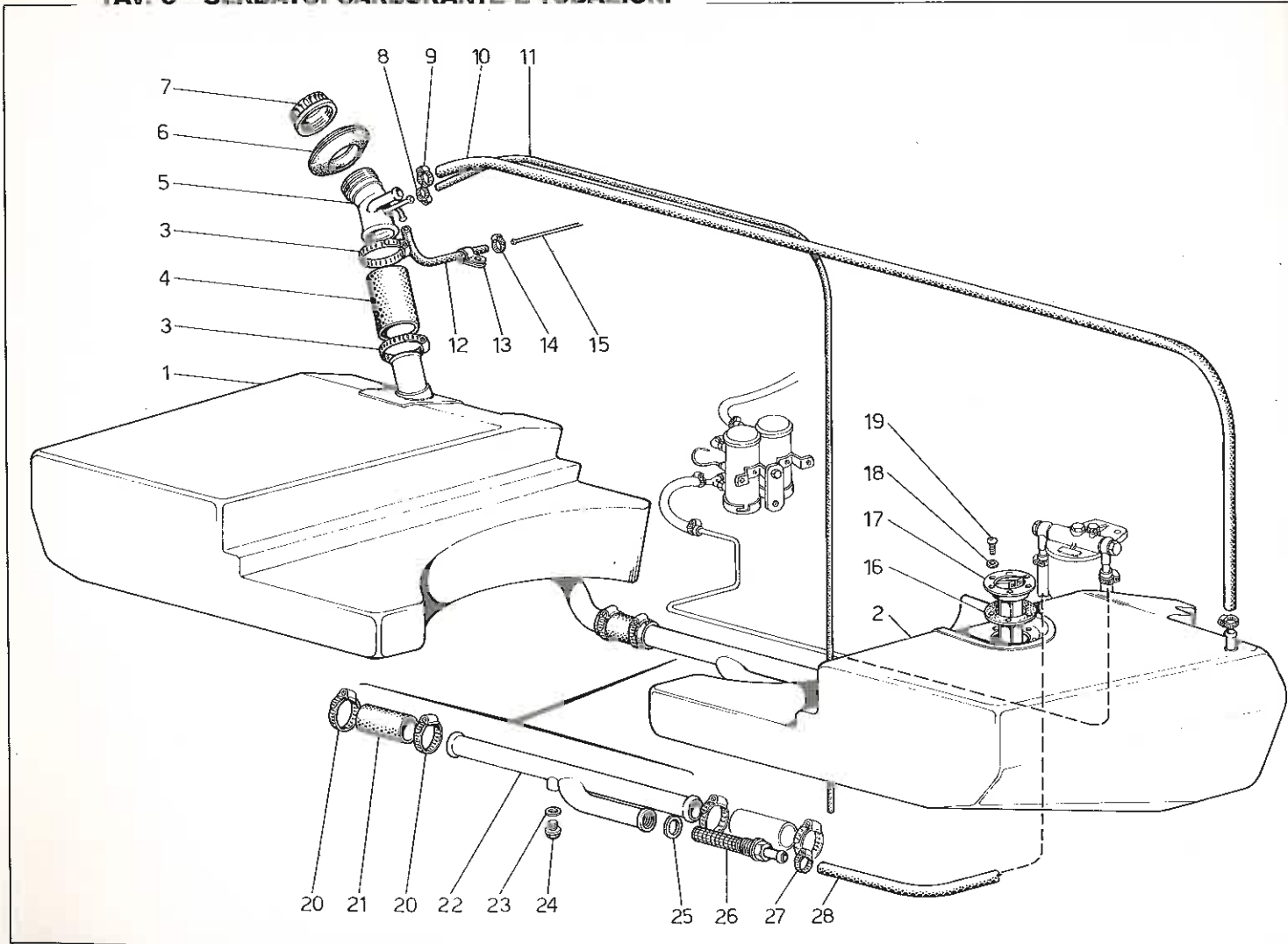
# TAV. 7 - DISTRIBUZIONE - COMANDI



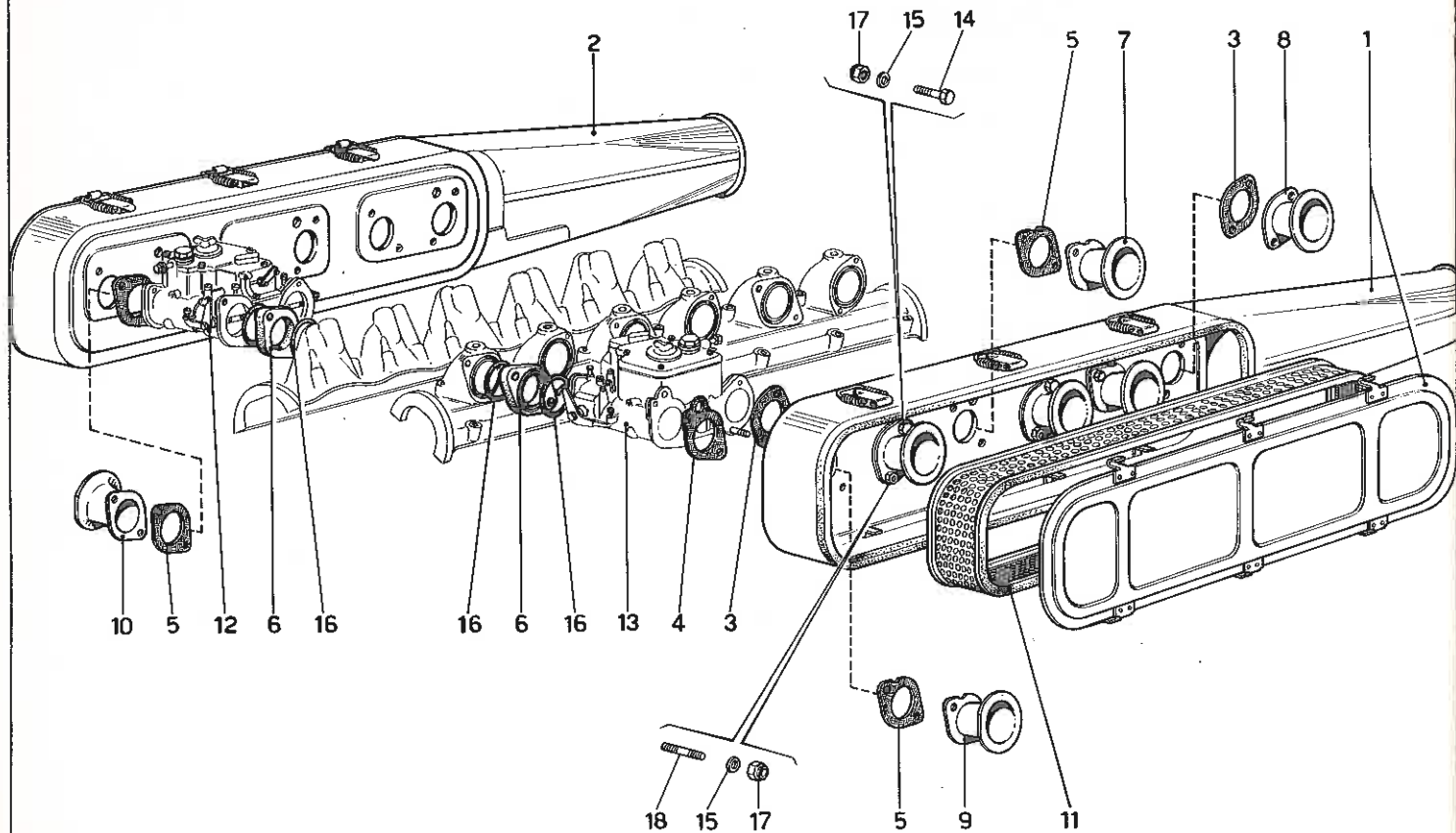
# TAV. 8 - POMPE E TUBAZIONI ALIMENTAZIONE



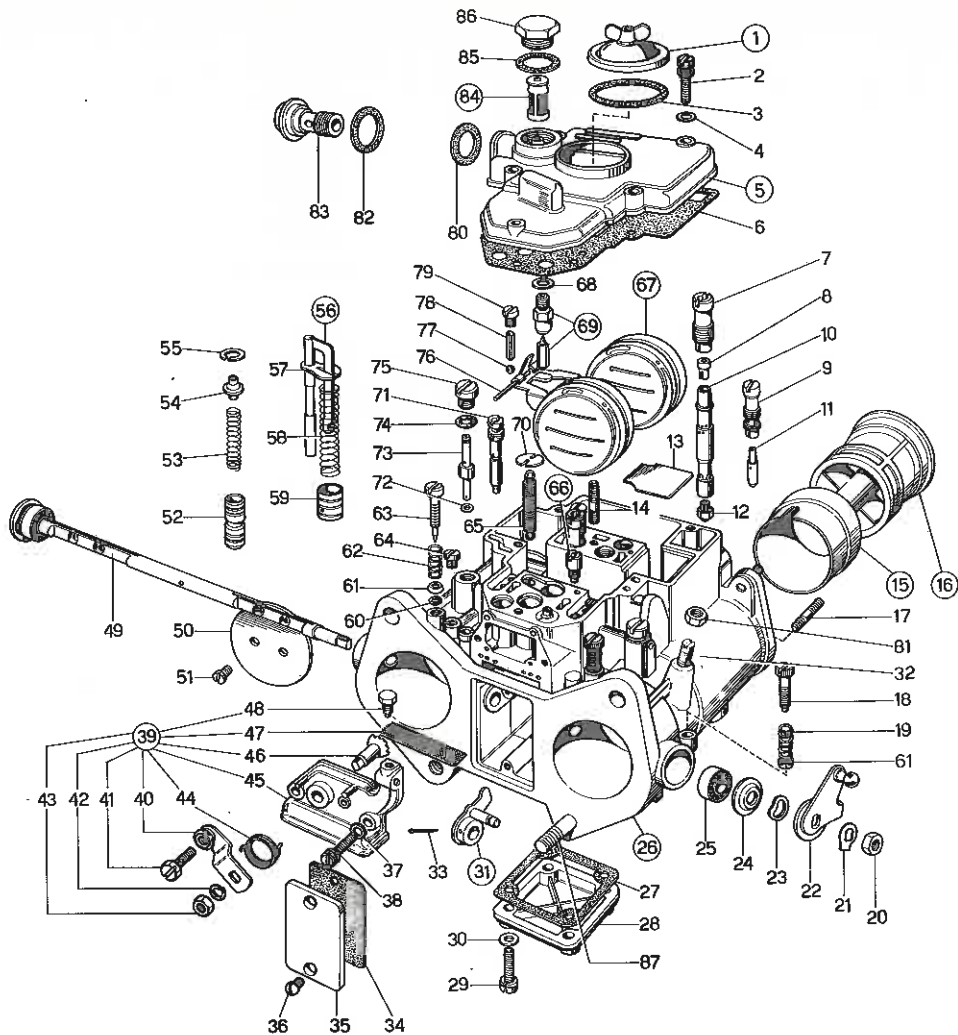
TAV. 9 - SERBATOI CARBURANTE E TUBAZIONI



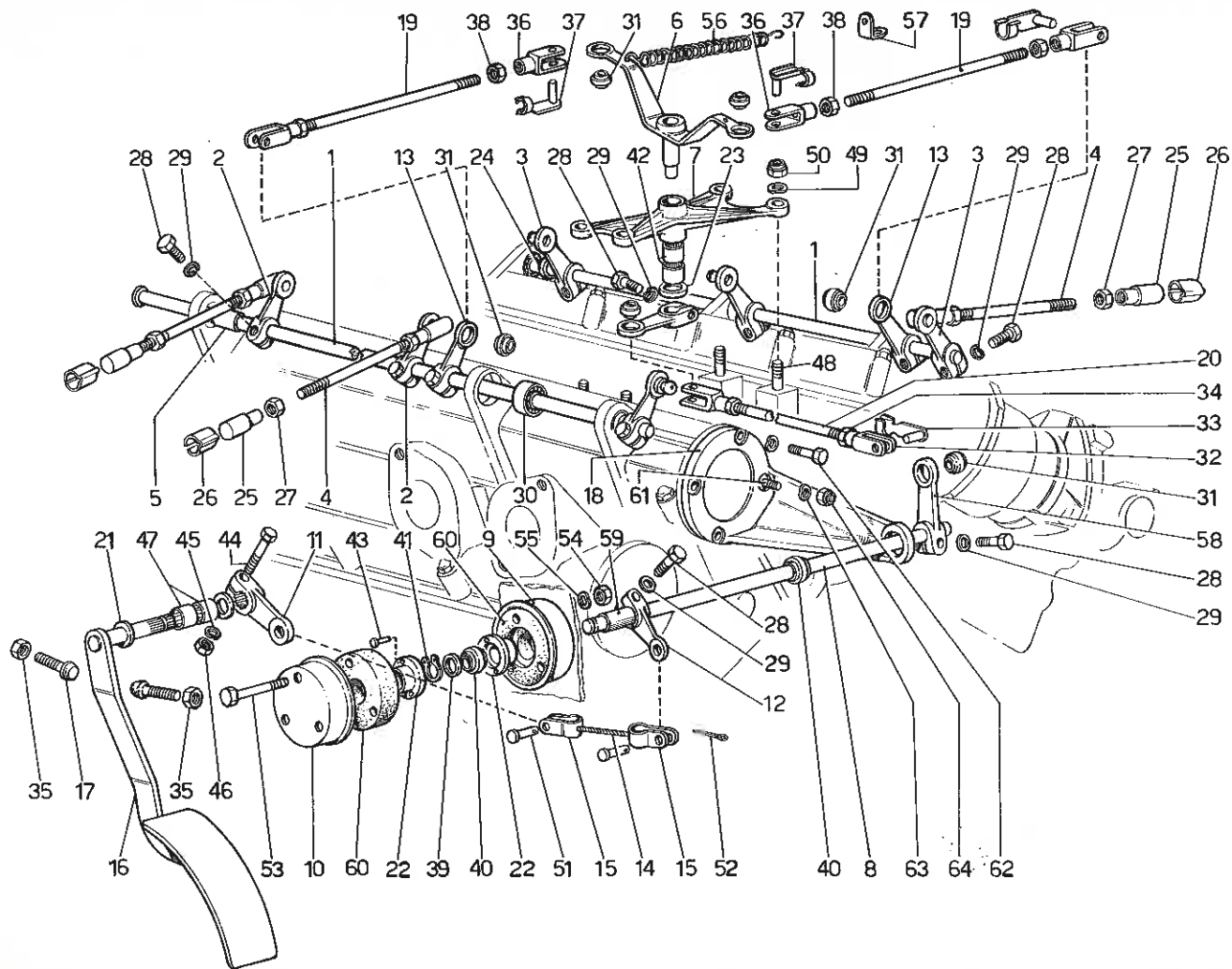
# TAV. 10 - PRESE ARIA



# TAV. 11 - CARBURATORE WEBER 38 DCOE 59/60

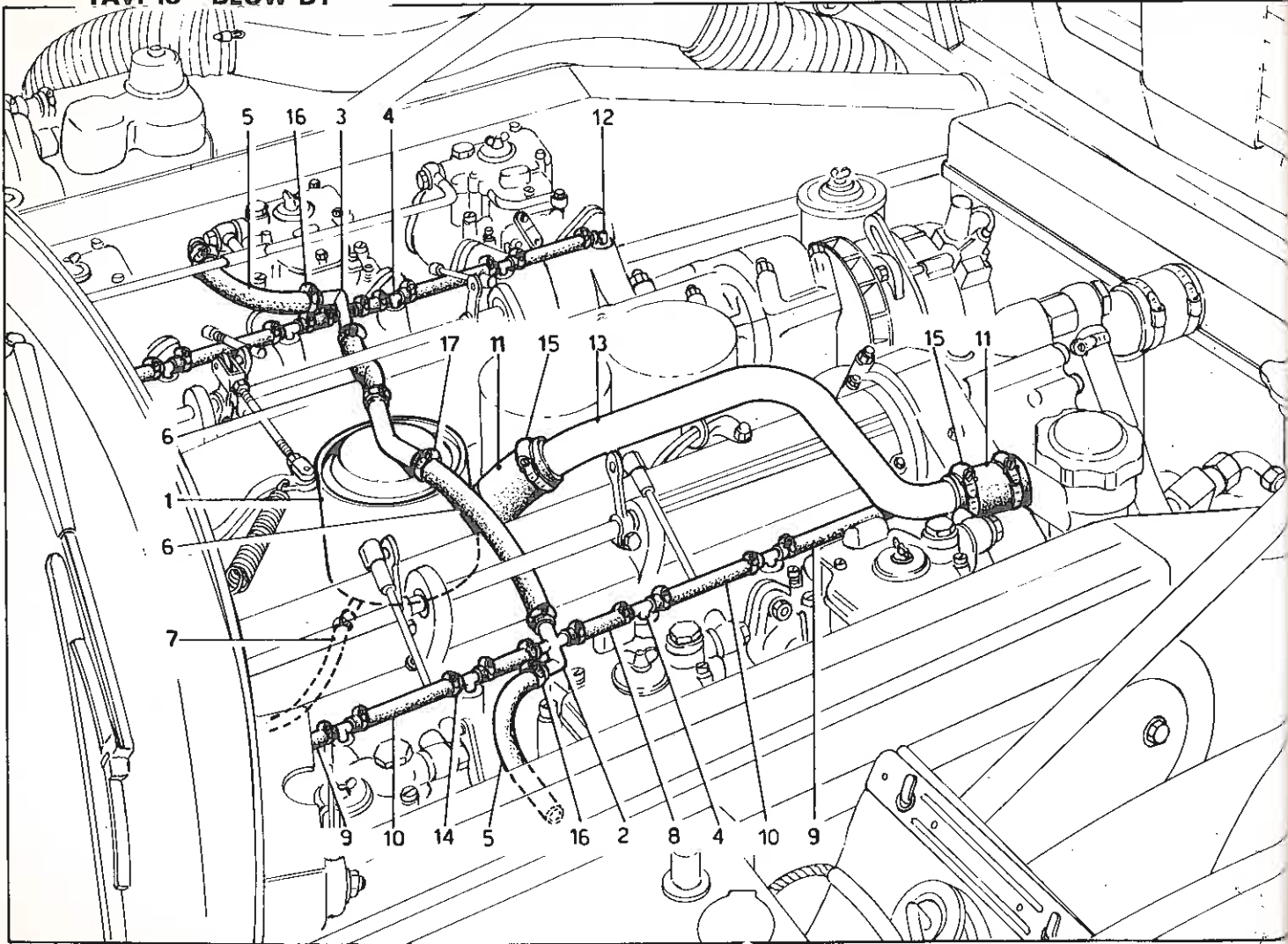


# TAV. 12 - COMANDO ACCELERATORE

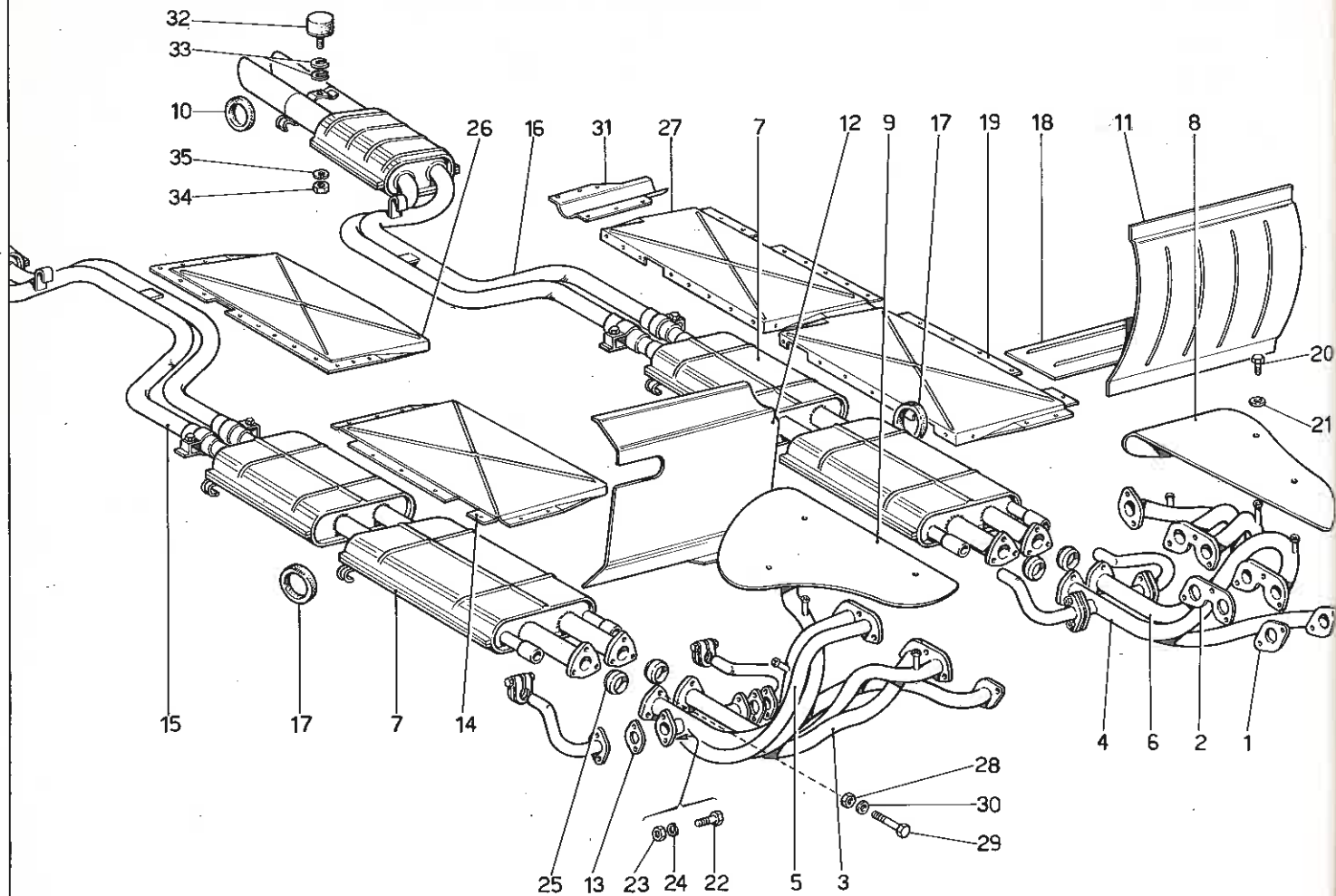




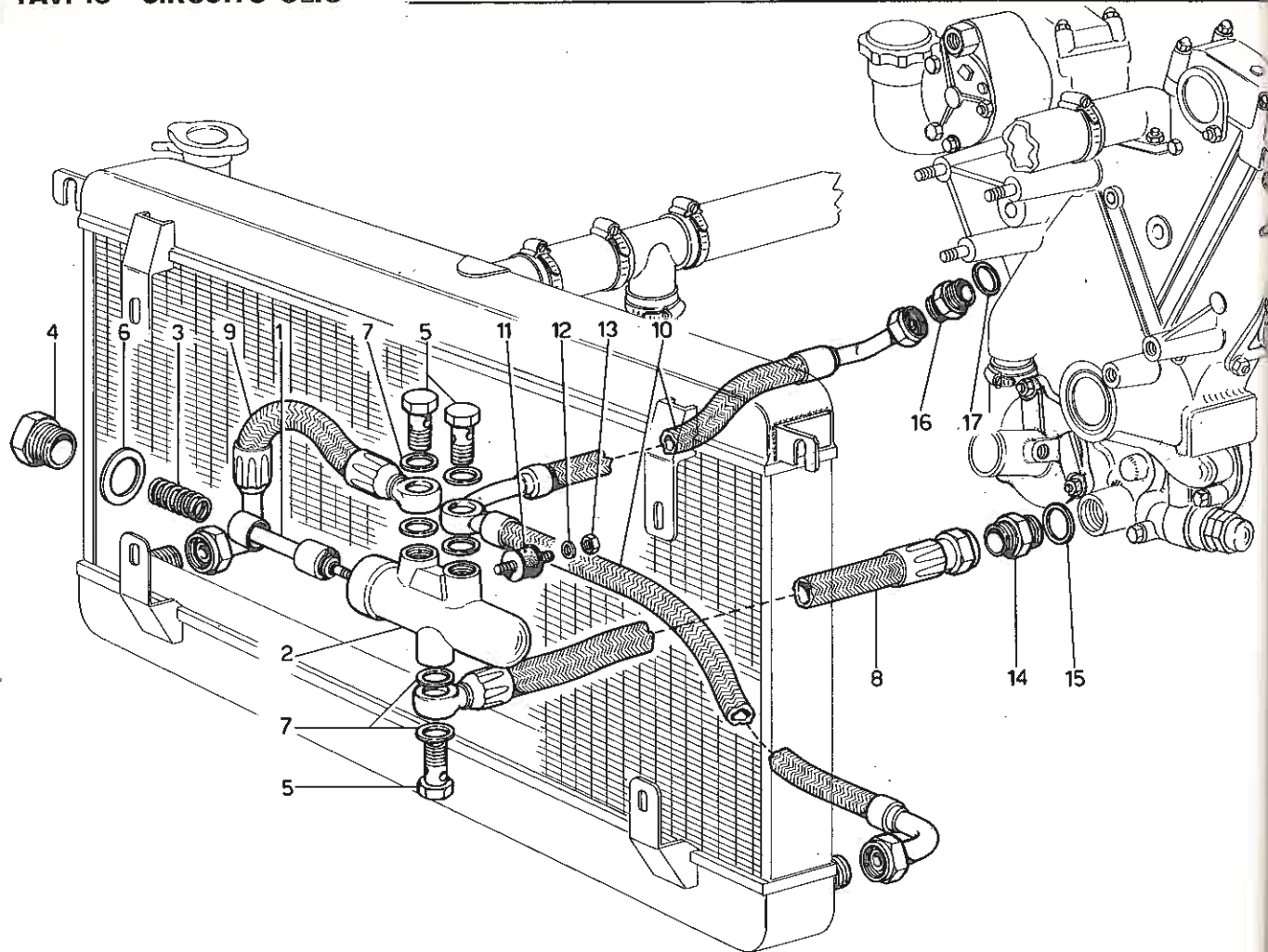
TAV. 13 - BLOW BY



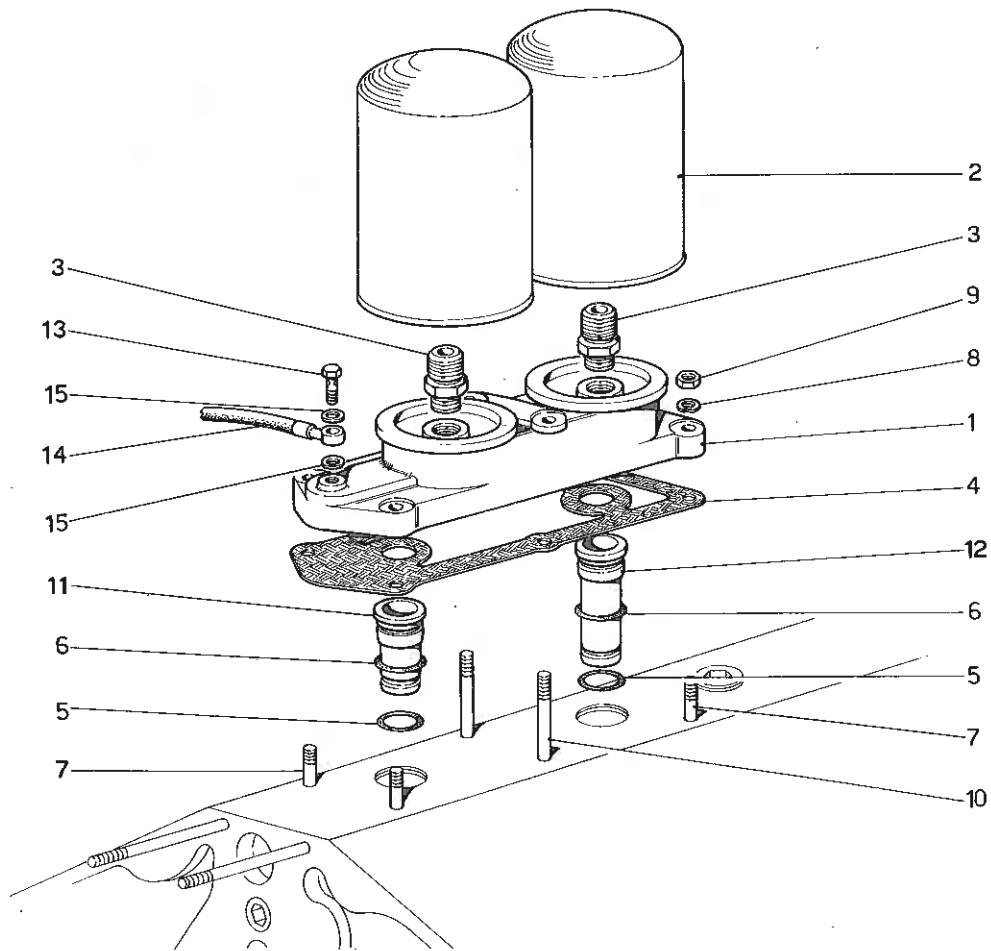
# TAV. 14 - IMPIANTO SCARICO



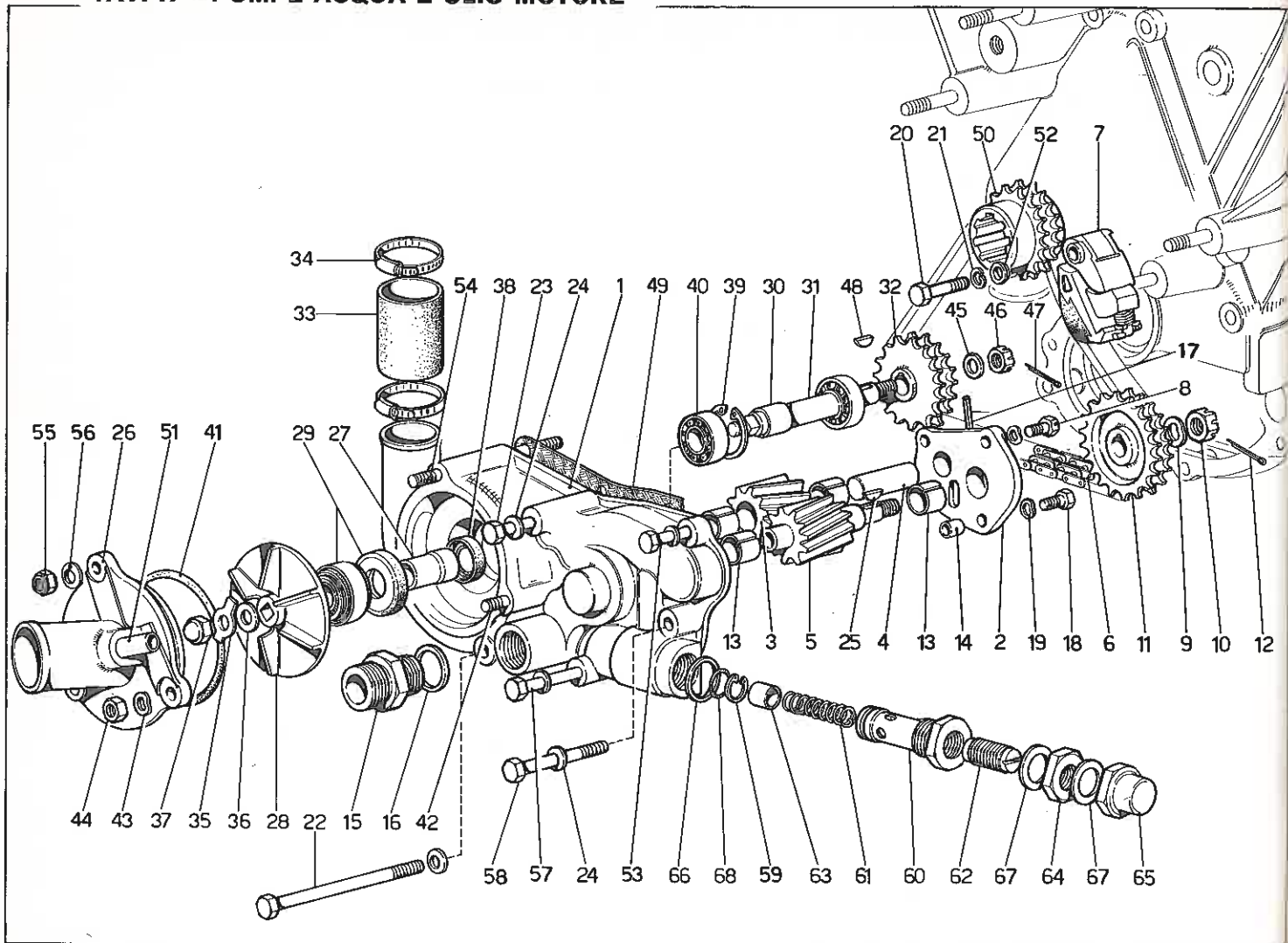
TAV. 15 - CIRCUITO OLIO



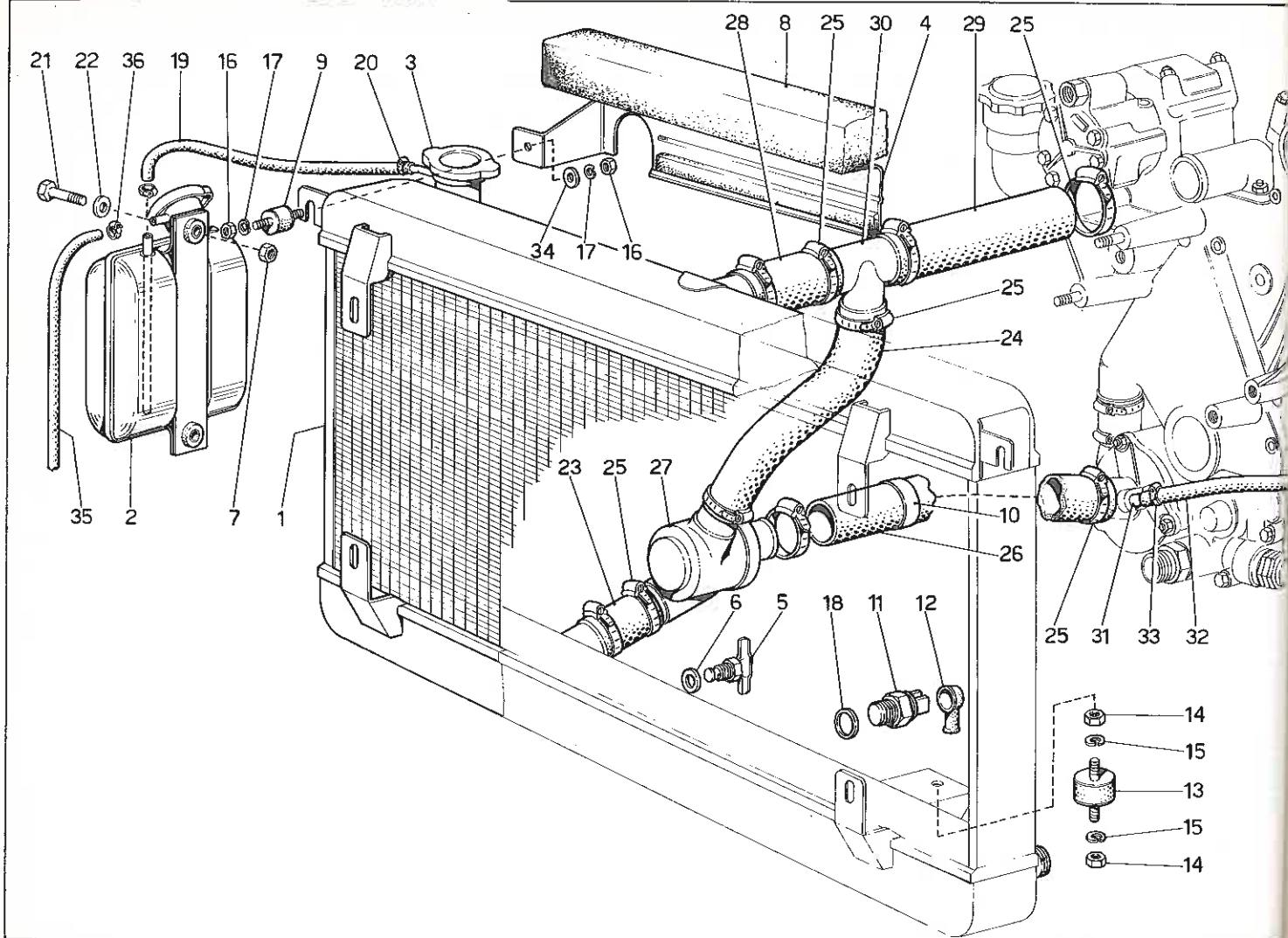
# TAV. 16 - FILTRI OLIO MOTORE



TAV. 17 - POMPE ACQUA E OLIO MOTORE

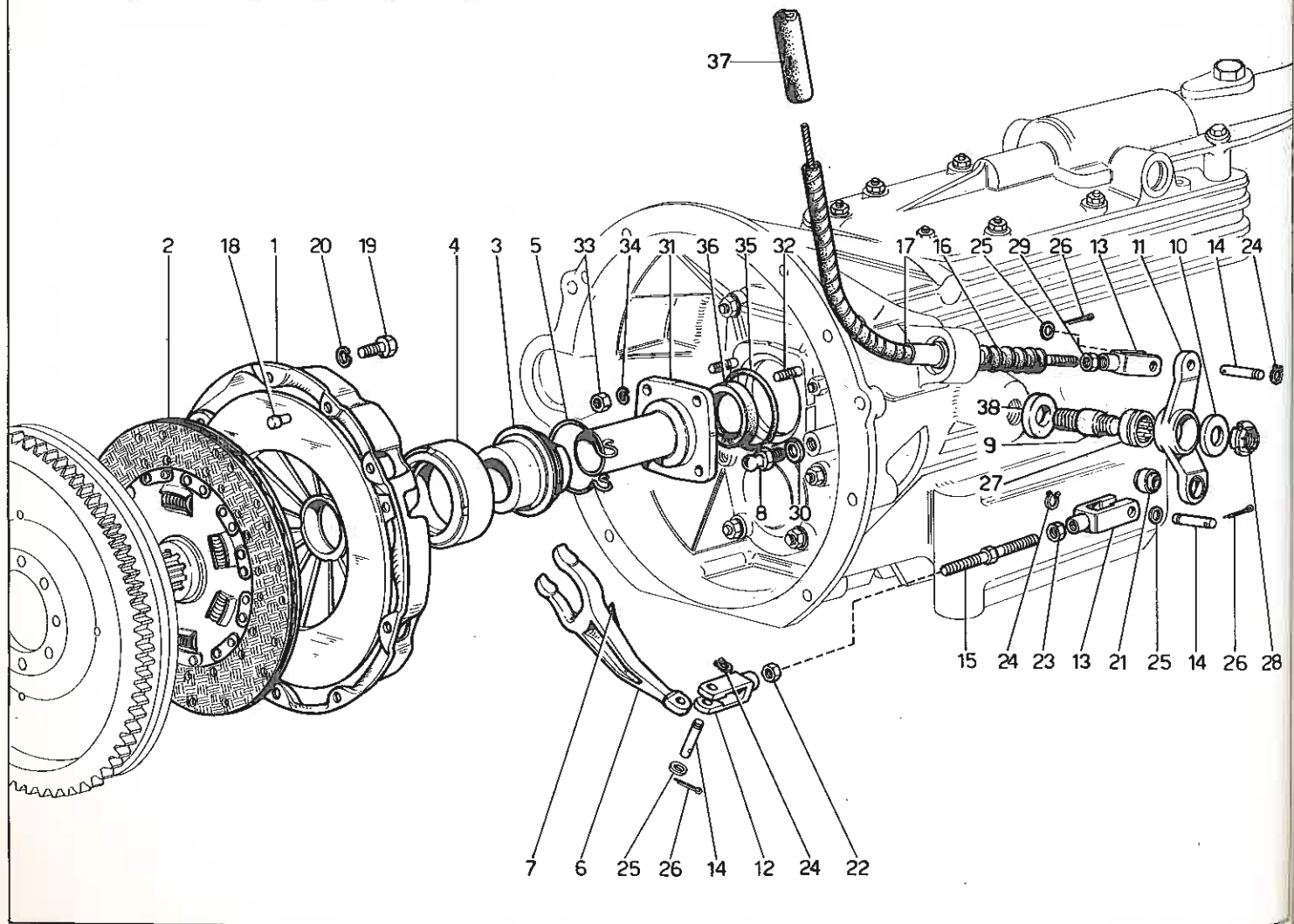


# TAV. 18 - RAFFREDDAMENTO

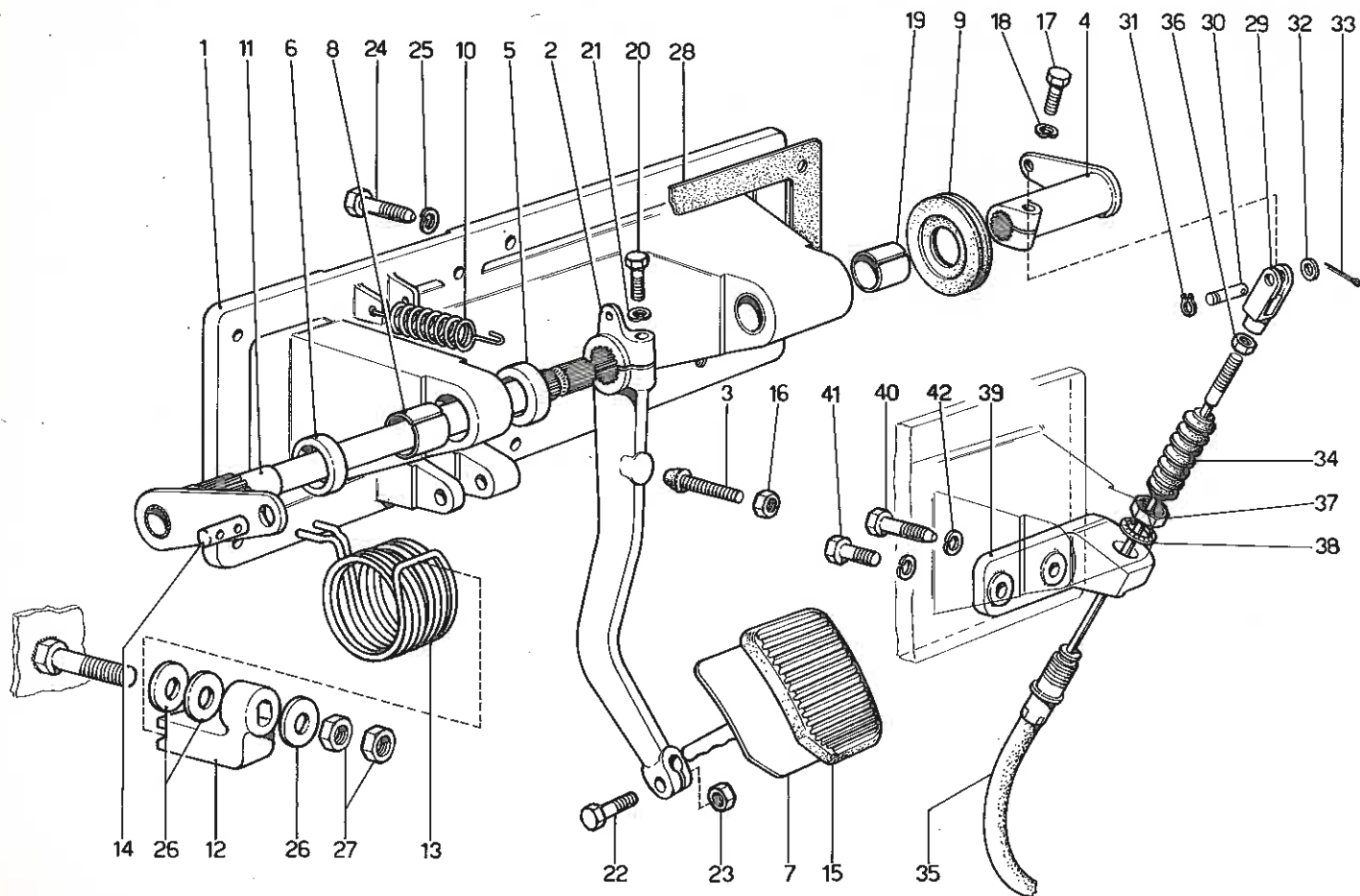




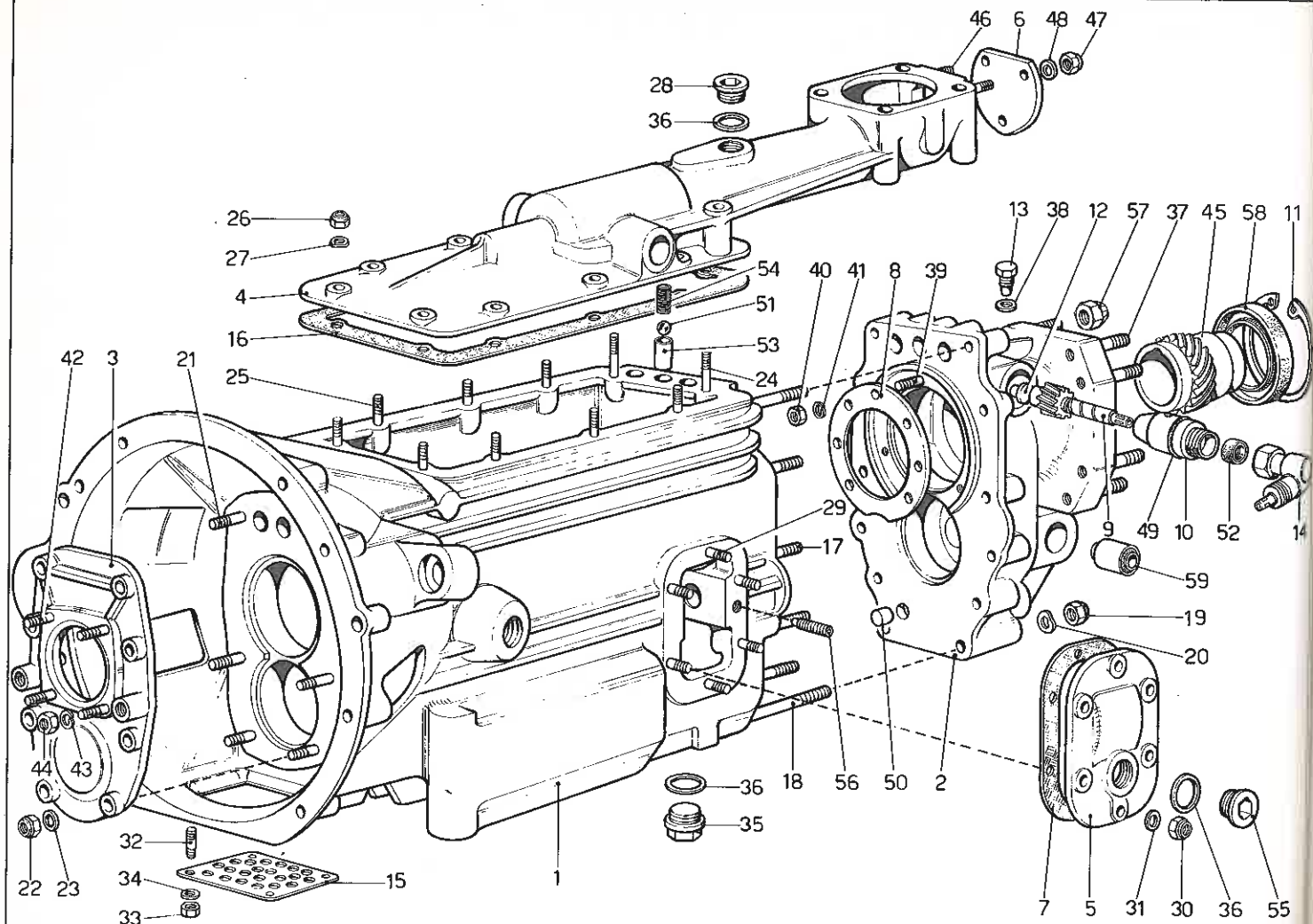
# TAV. 19 - FRIZIONE E COMANDI



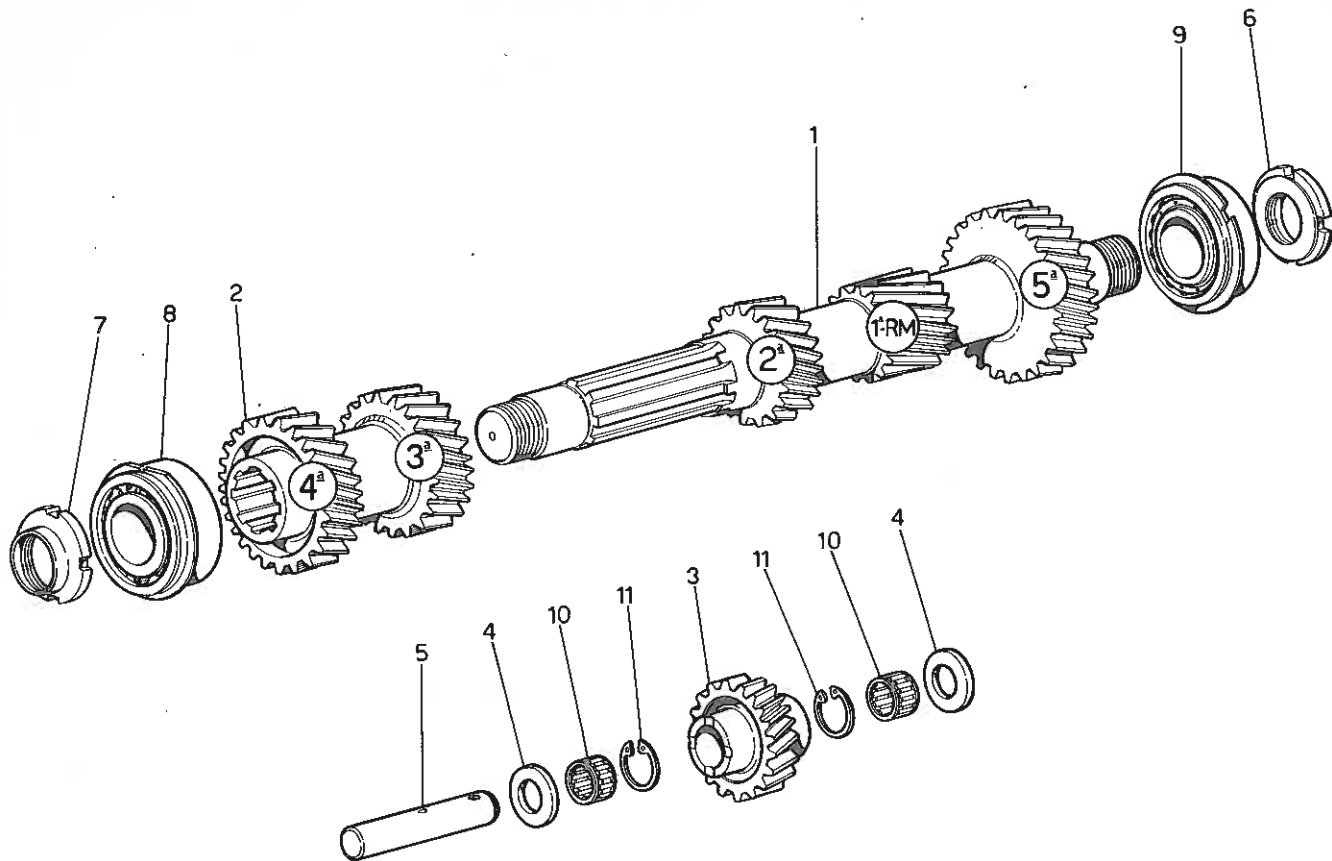
# TAV. 20 - PEDALIERA - COMANDO FRIZIONE



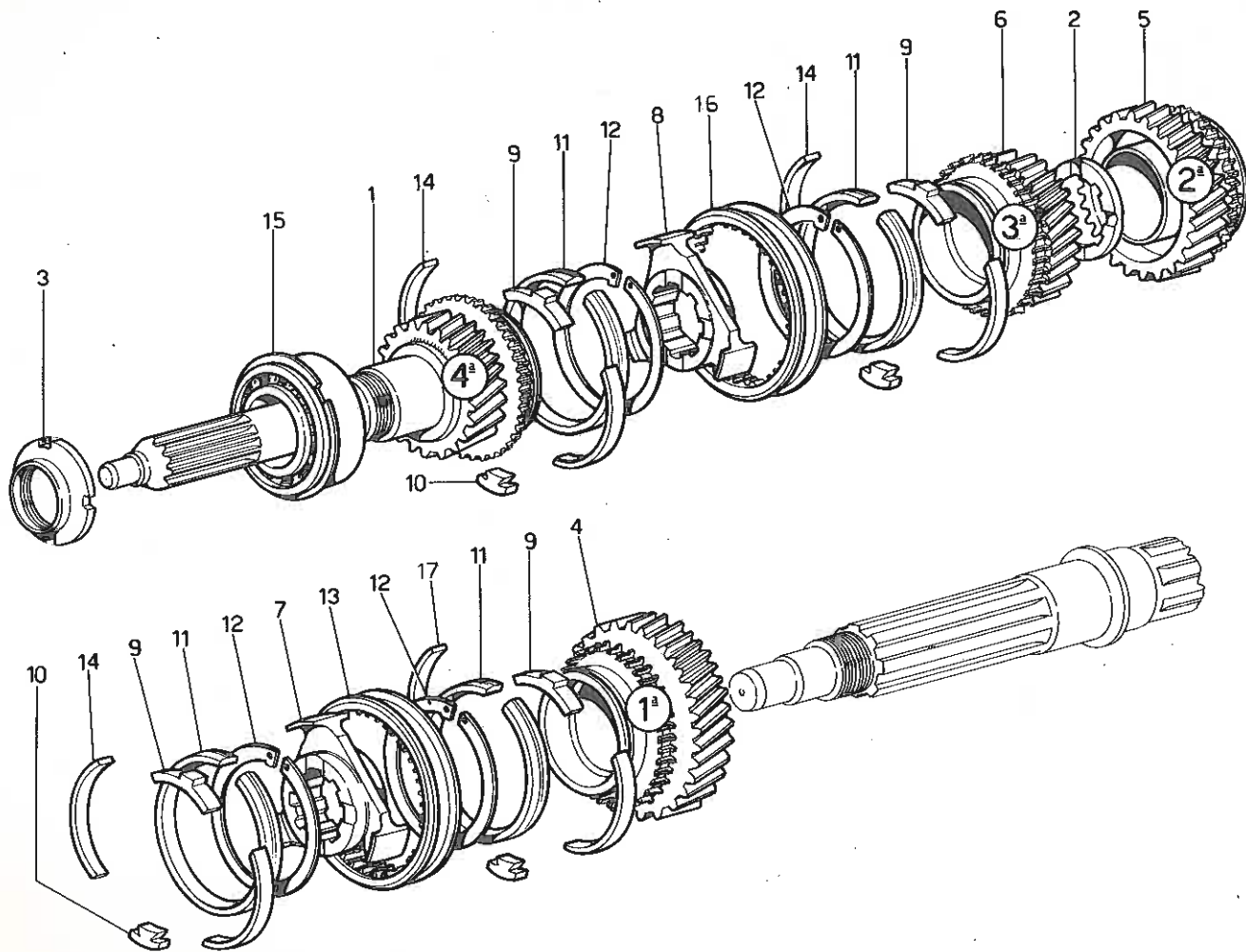
# TAV. 21 - SCATOLA CAMBIO



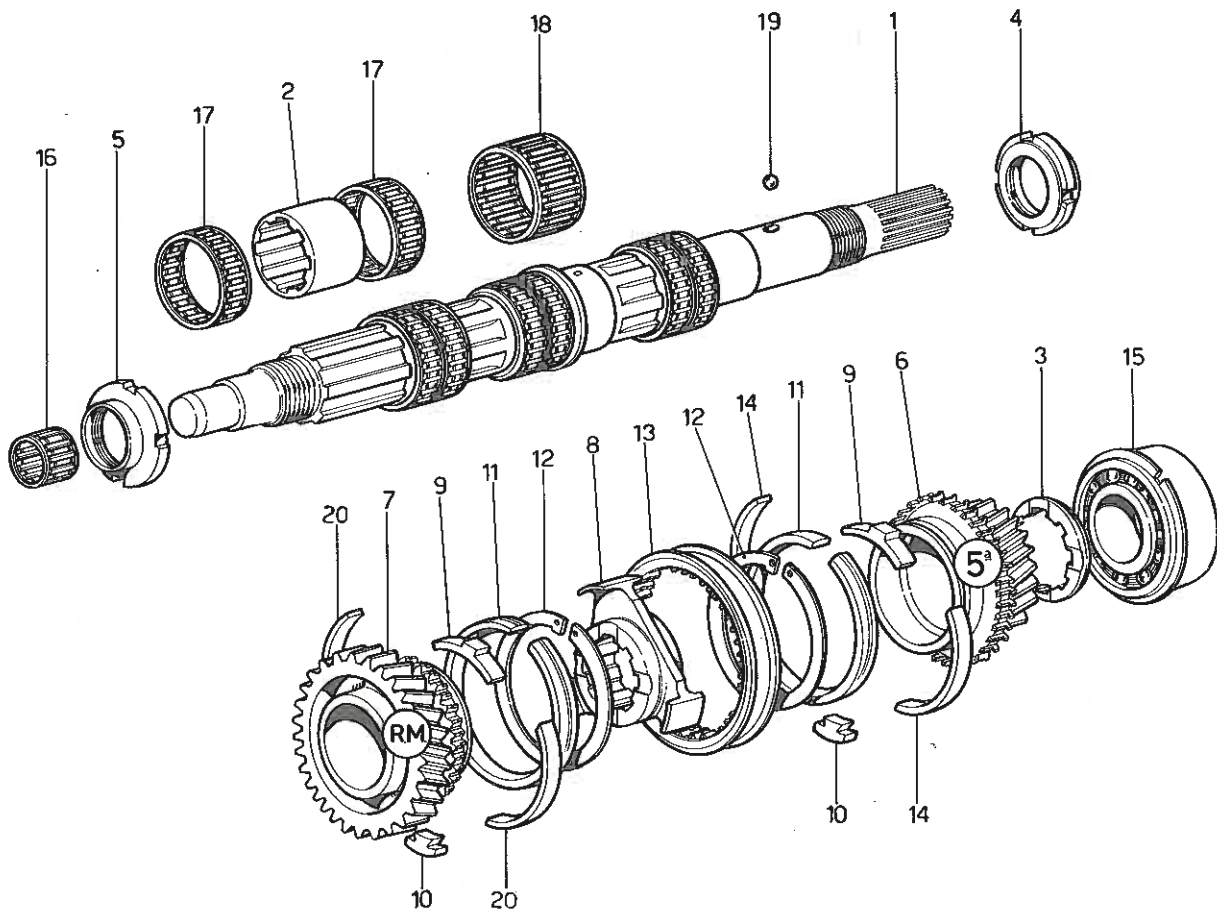
# TAV. 22 - RUOTISMI ALBERO PRIMARIO CAMBIO



TAV. 23 - RUOTISMI ALBERO SECONDARIO CAMBIO (PARTE ANTERIORE)

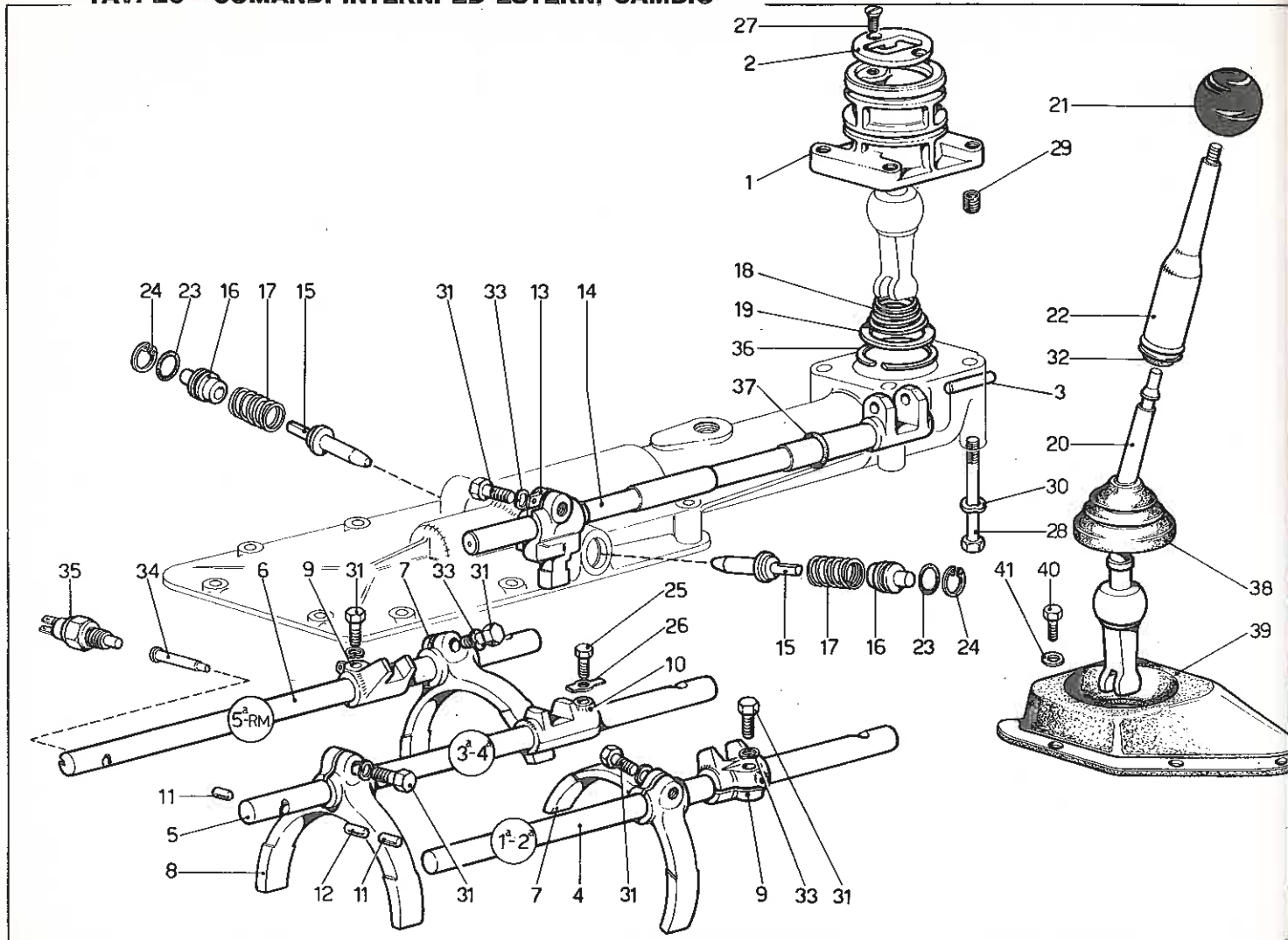


# TAV. 24 - RUOTISMI ALBERO SECONDARIO CAMBIO (PARTE POSTERIORE)

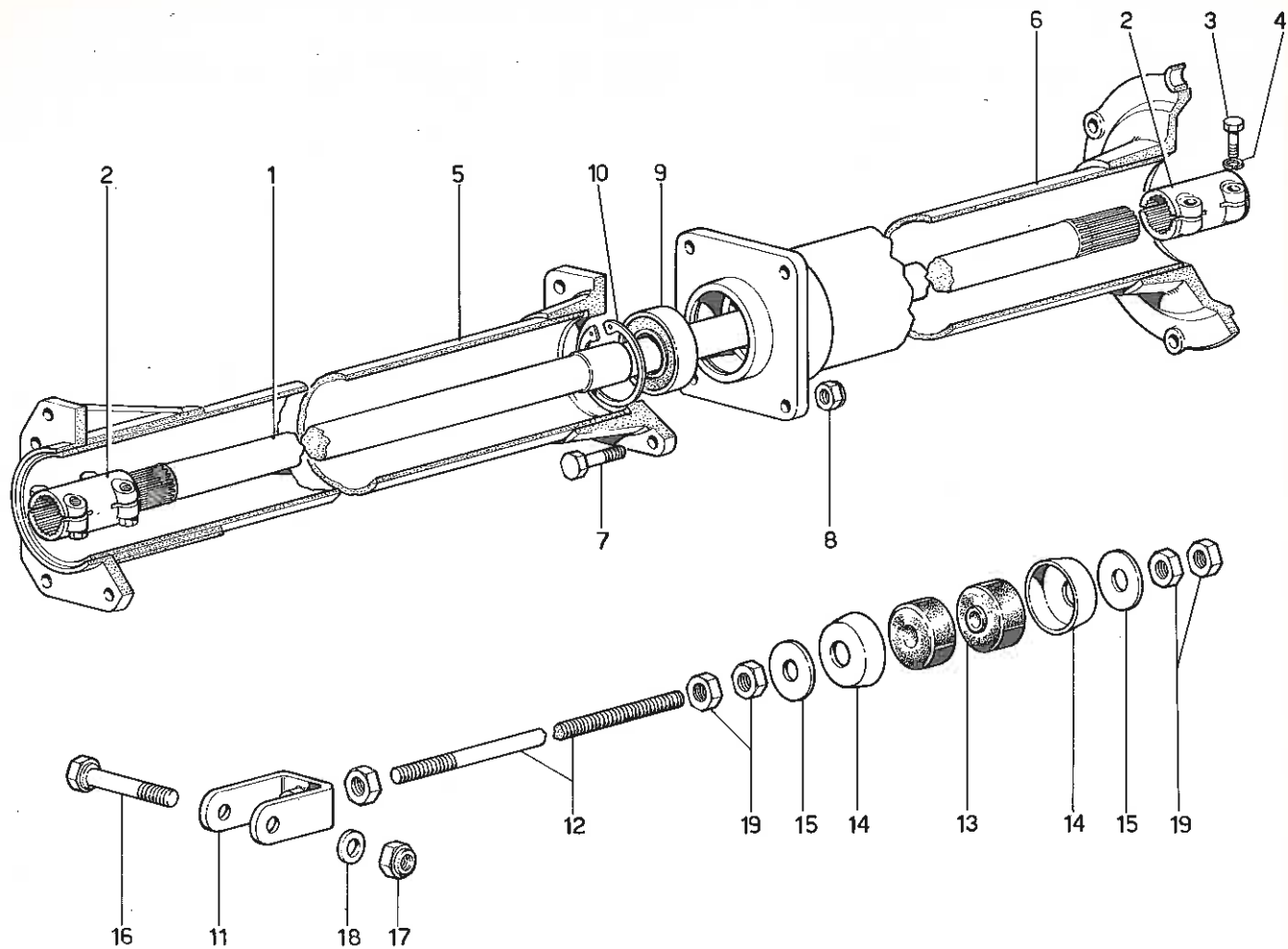




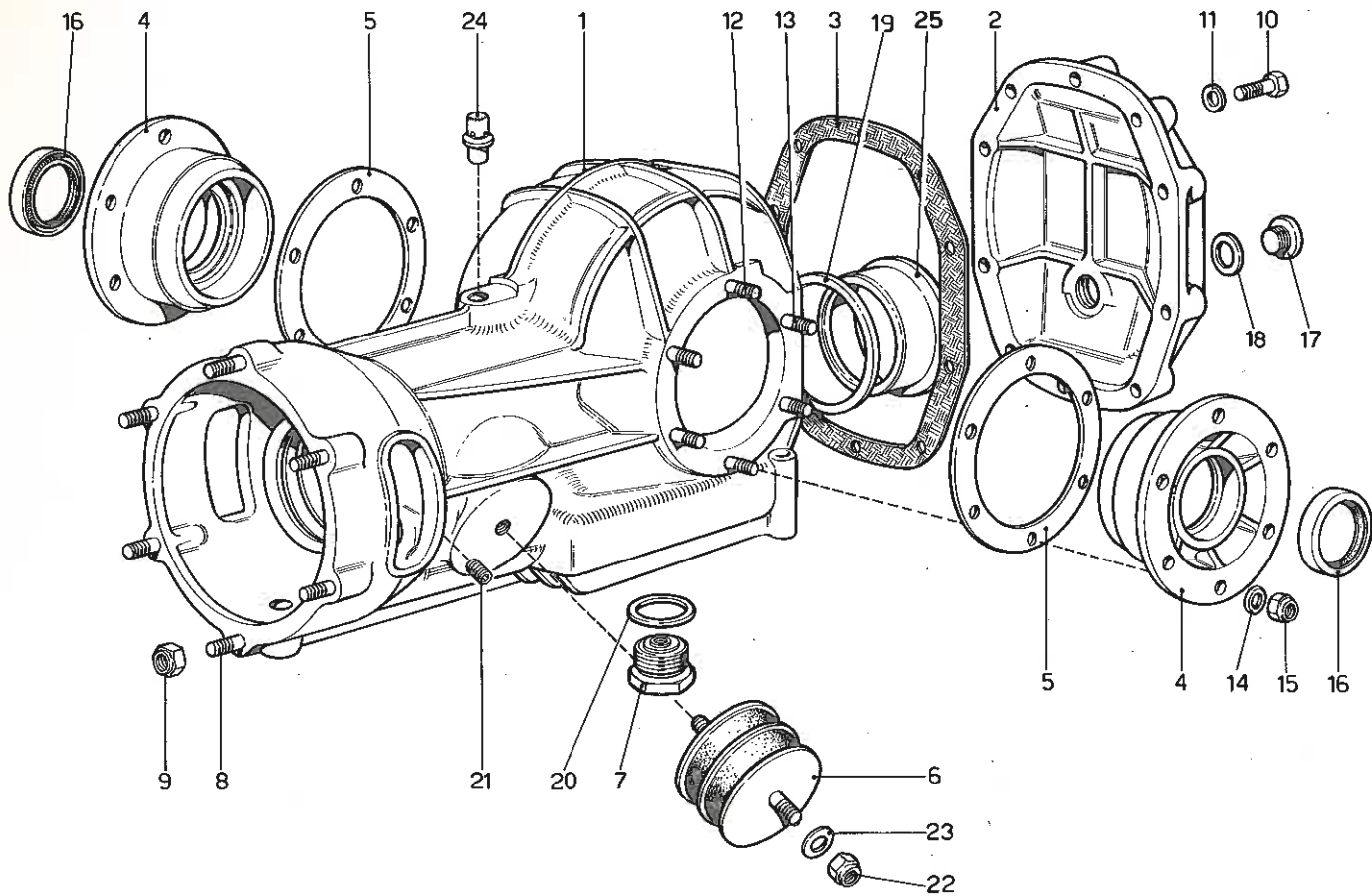
TAV. 25 - COMANDI INTERNI ED ESTERNI CAMBIO



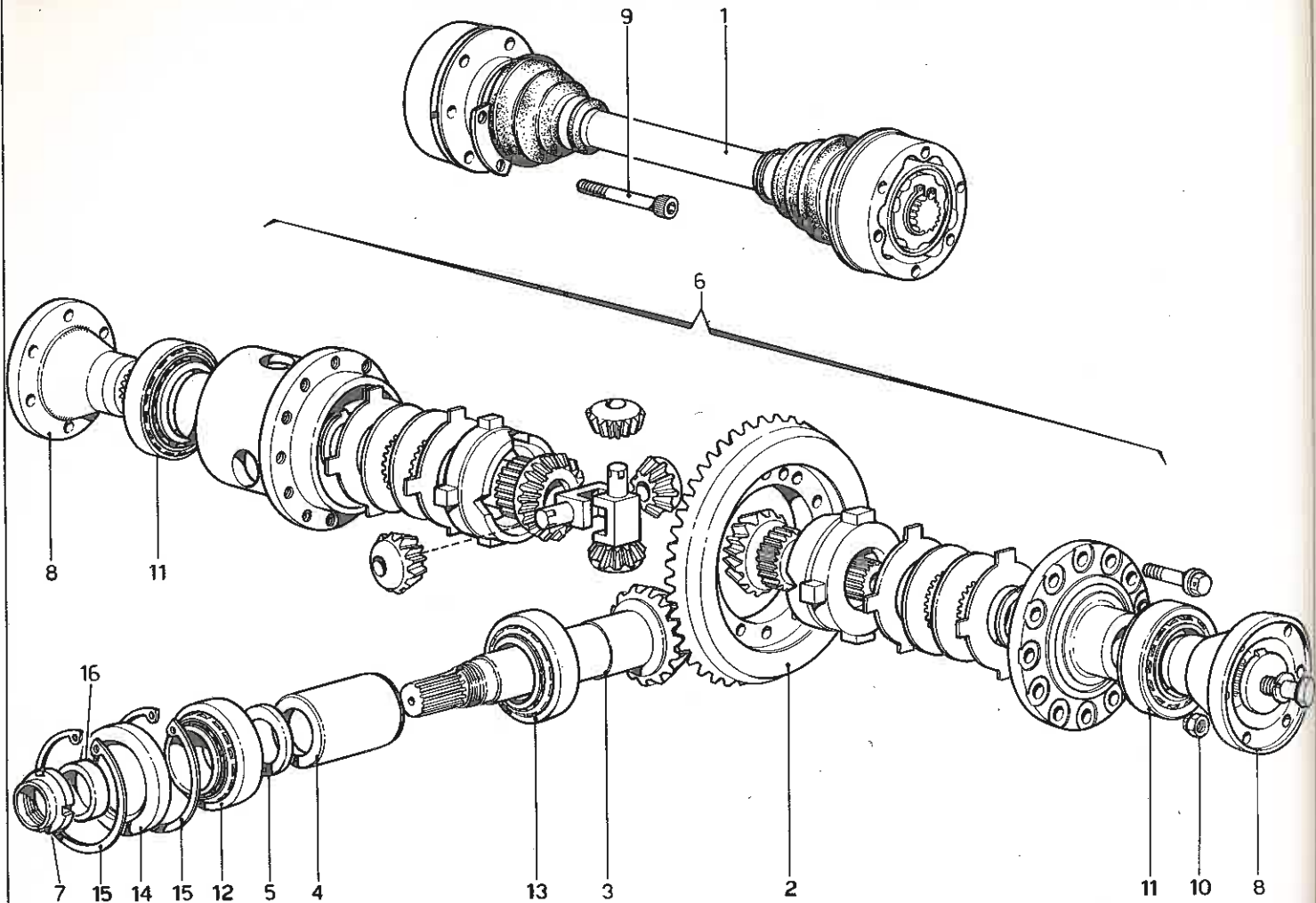
TAV. 26 - ALBERO DI TRASMISSIONE



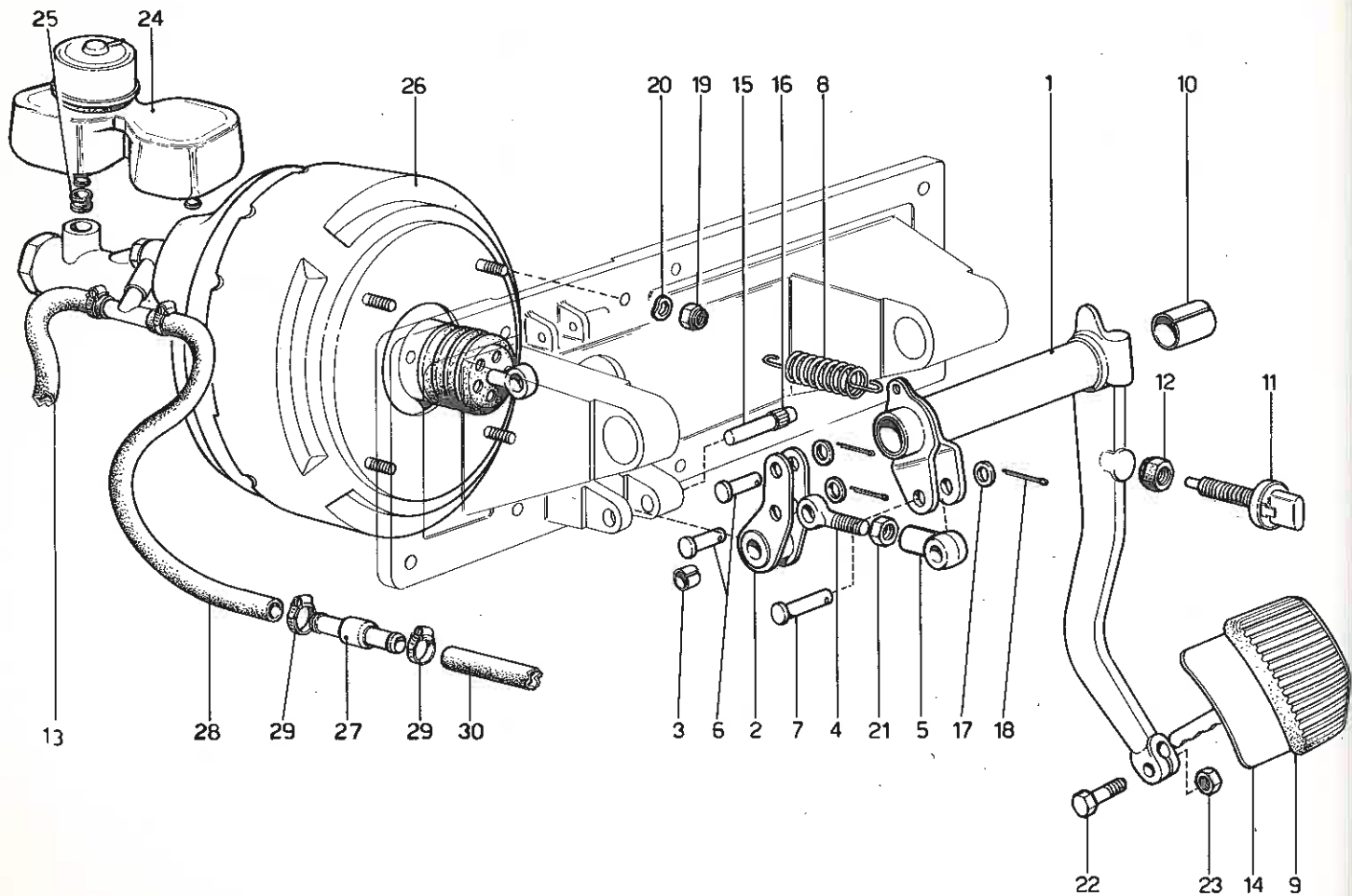
# TAV. 27 - SCATOLA DIFFERENZIALE



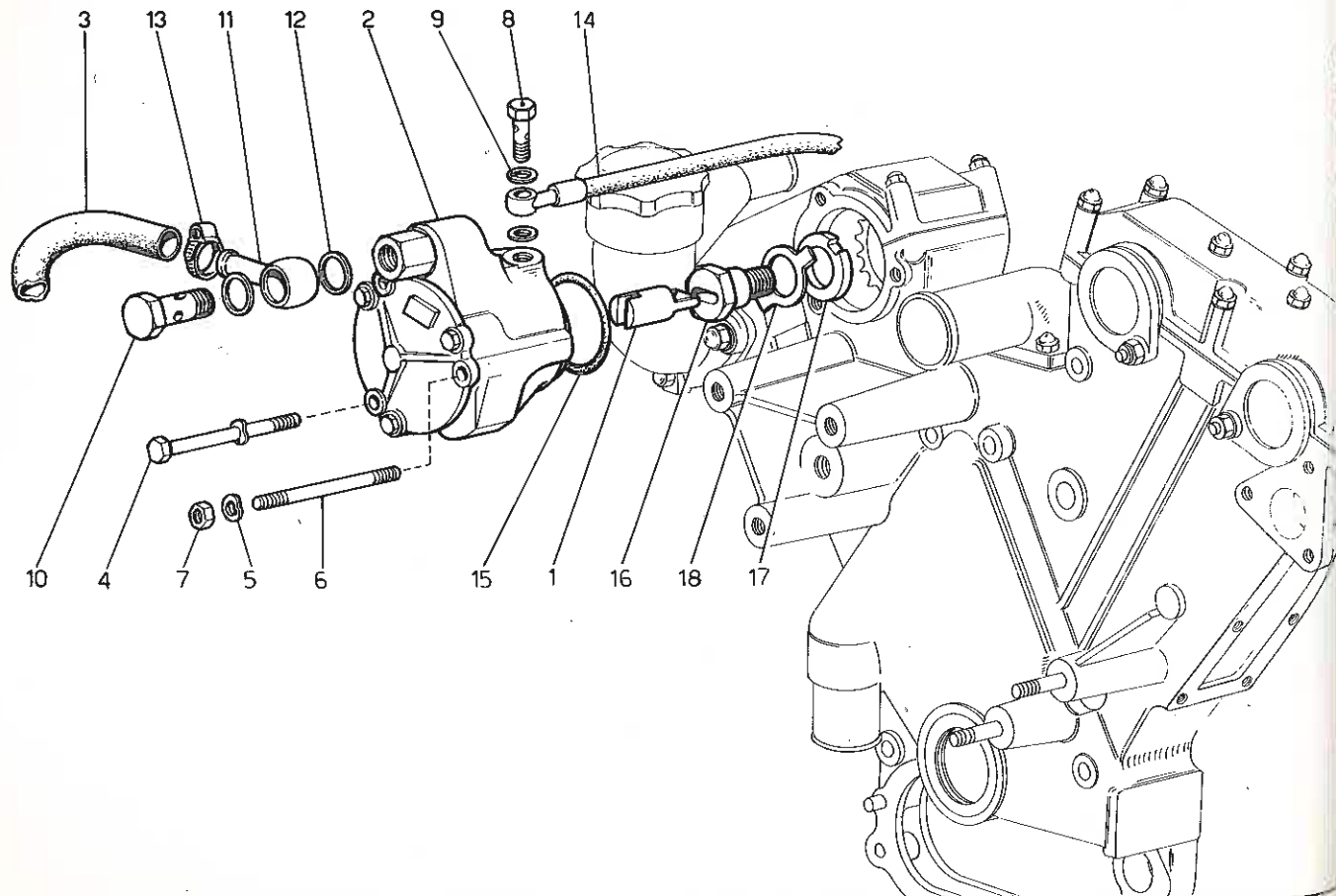
TAV. 28 - DIFFERENZIALE E SEMIASSI



# TAV. 29 - COMANDO IDRAULICO FRENI

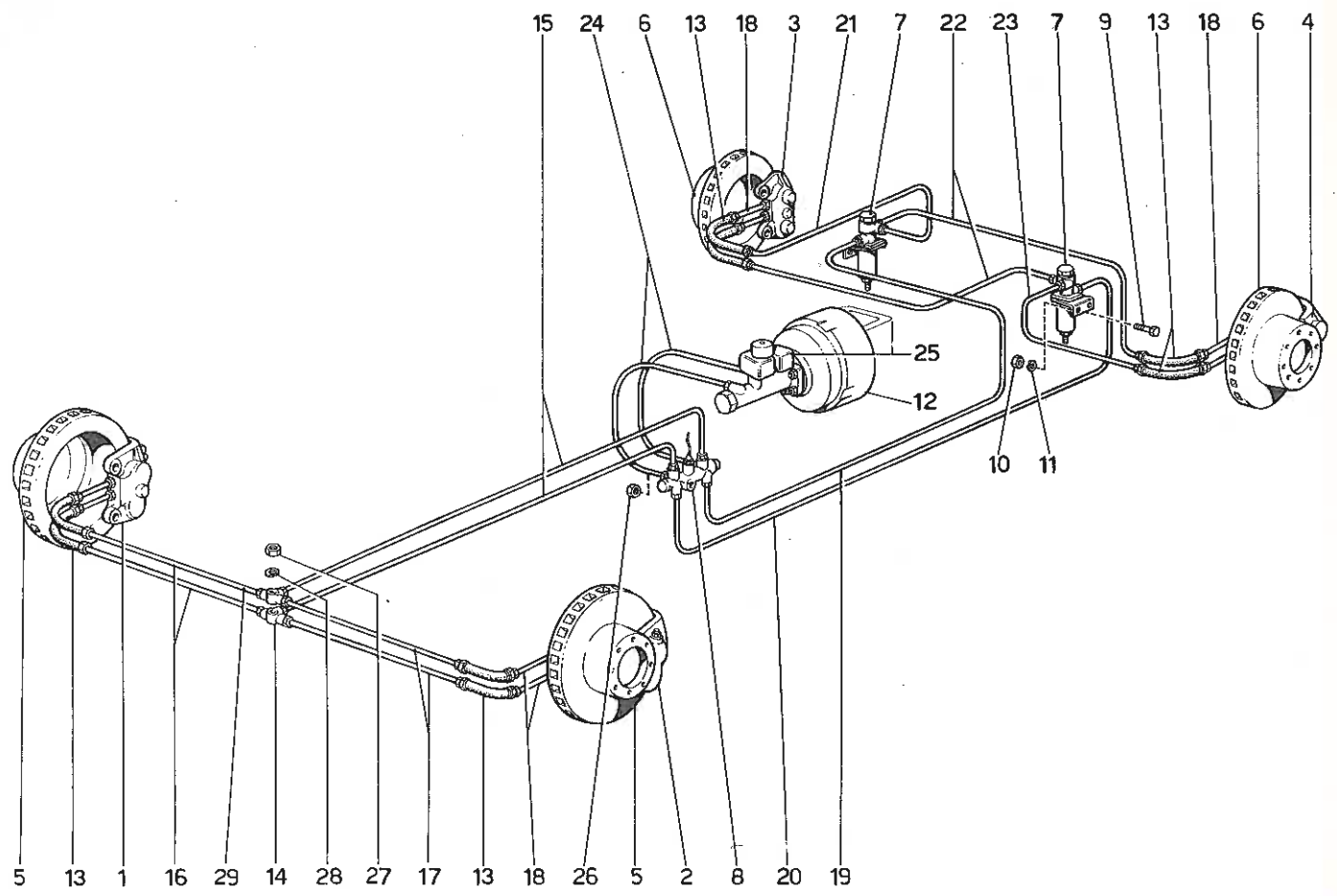


# TAV. 30 - POMPA DEPRESSIONE SERVOFRENO

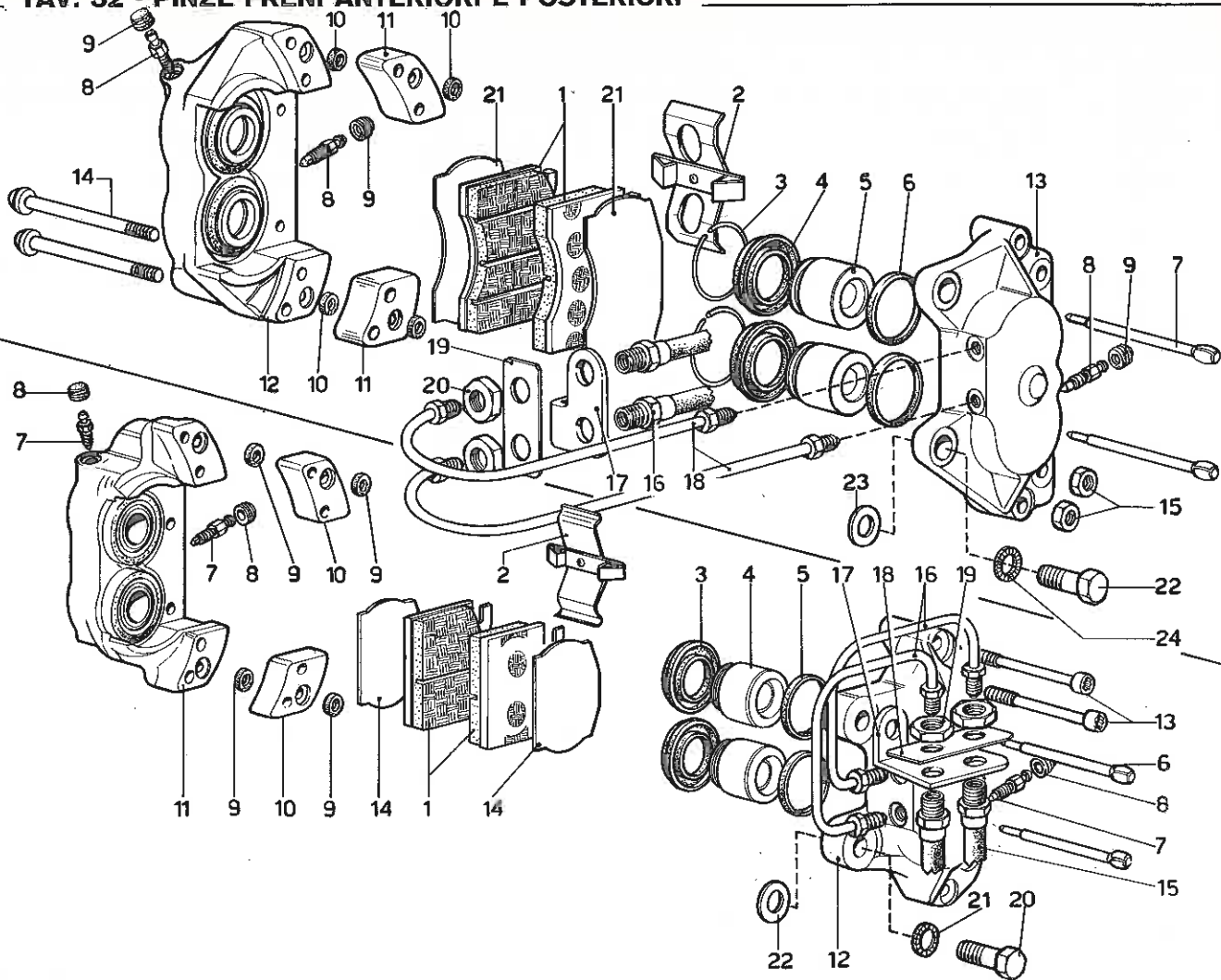




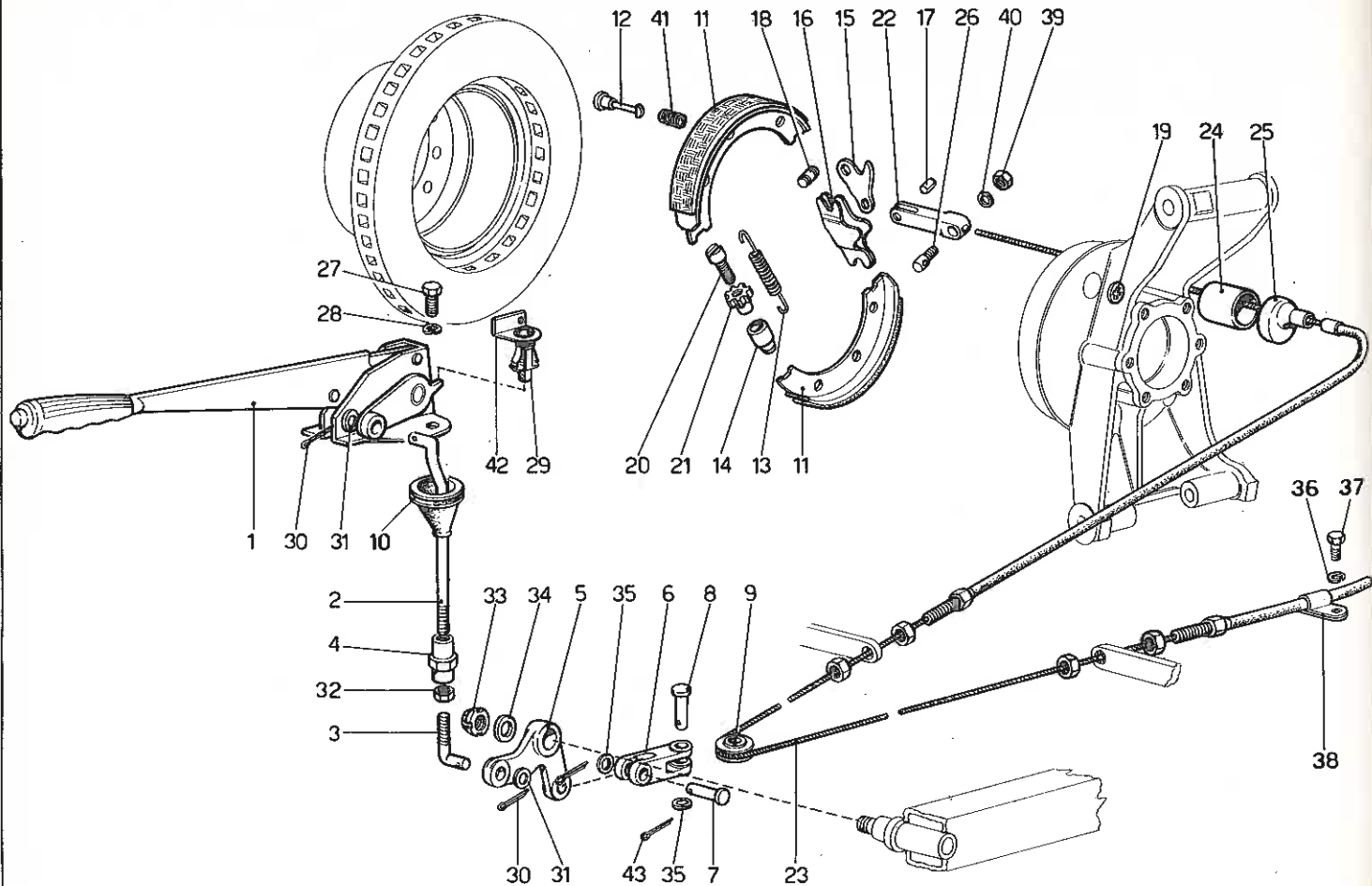
# TAV. 31 - COMANDO IDRAULICO FRENI SULLE RUOTE



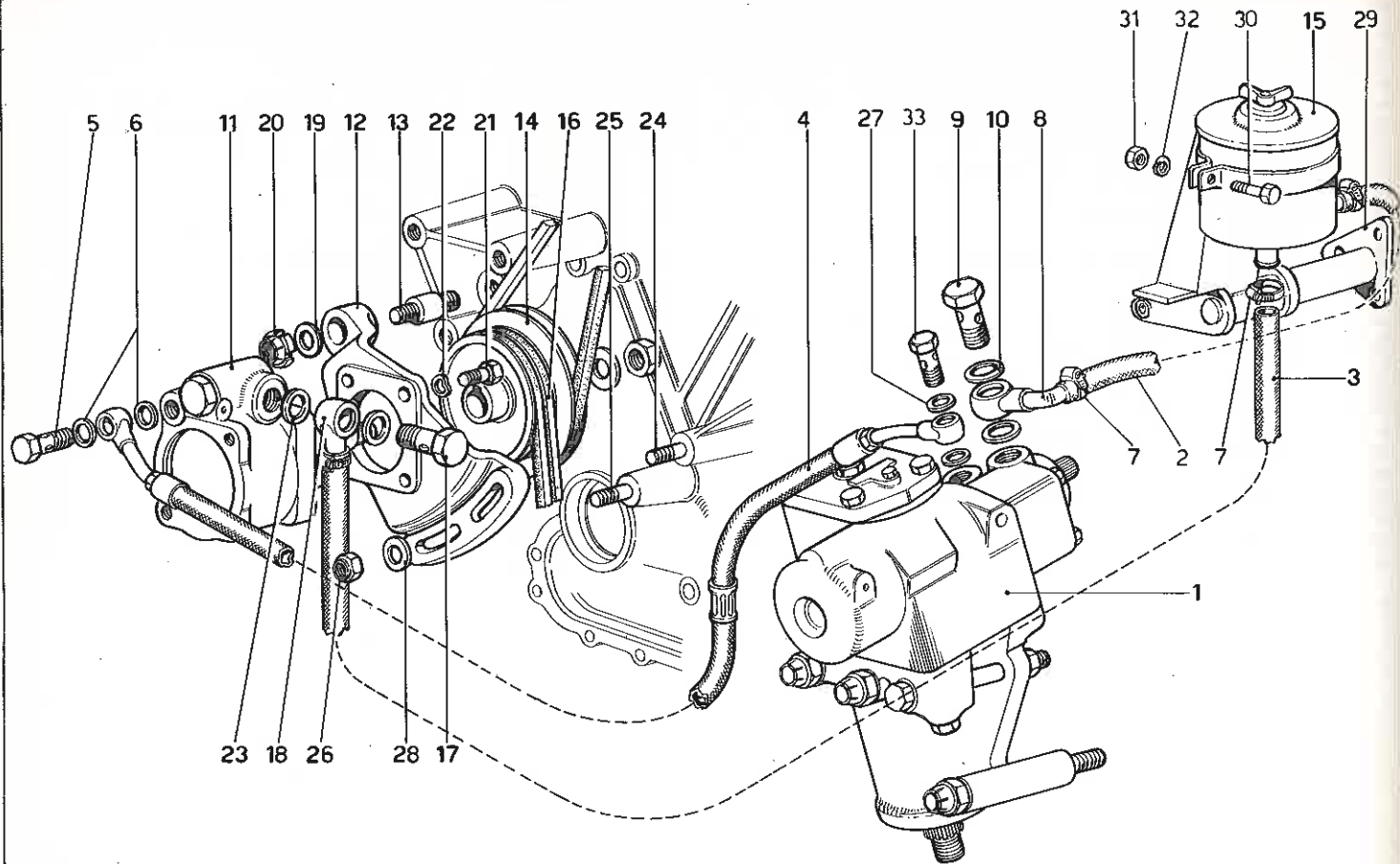
# TAV. 32 - PINZE FRENI ANTERIORI E POSTERIORI



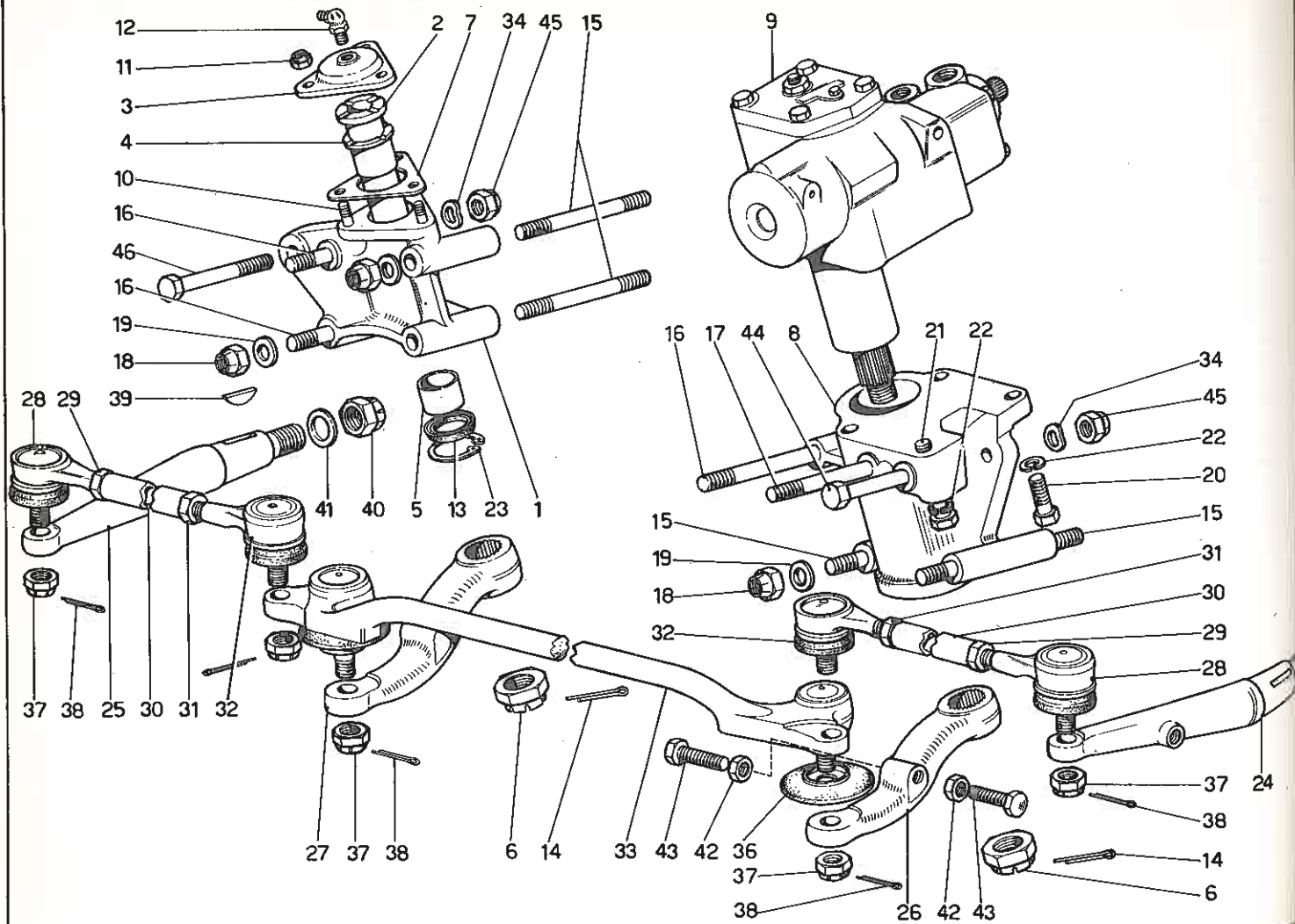
# TAV. 33 - COMANDO A MANO FRENI



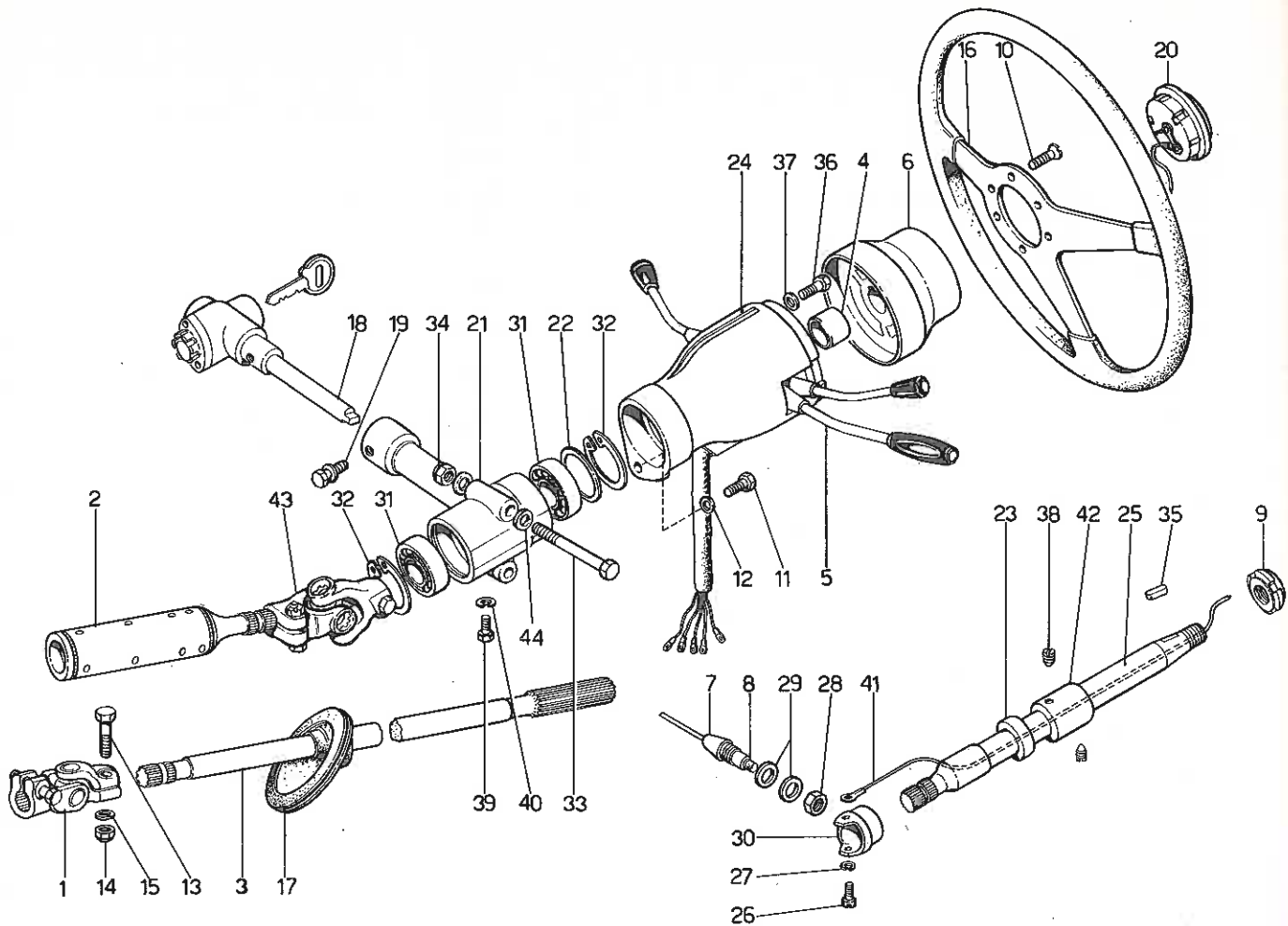
TAV. 34 - IMPIANTO GUIDA IDRAULICA



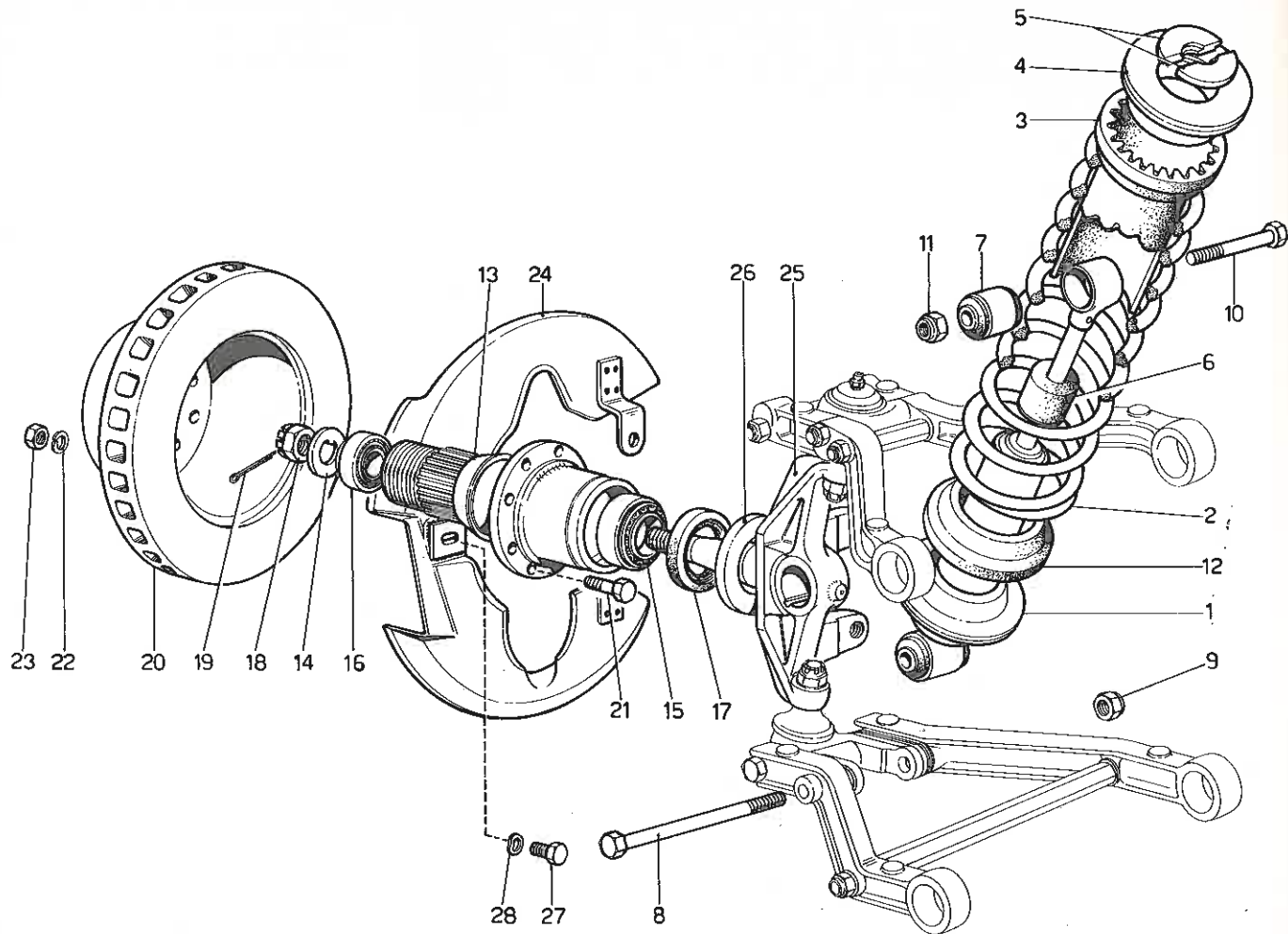
# TAV. 35 - ORGANI DI STERZO



TAV. 36 - COMANDO STERZO

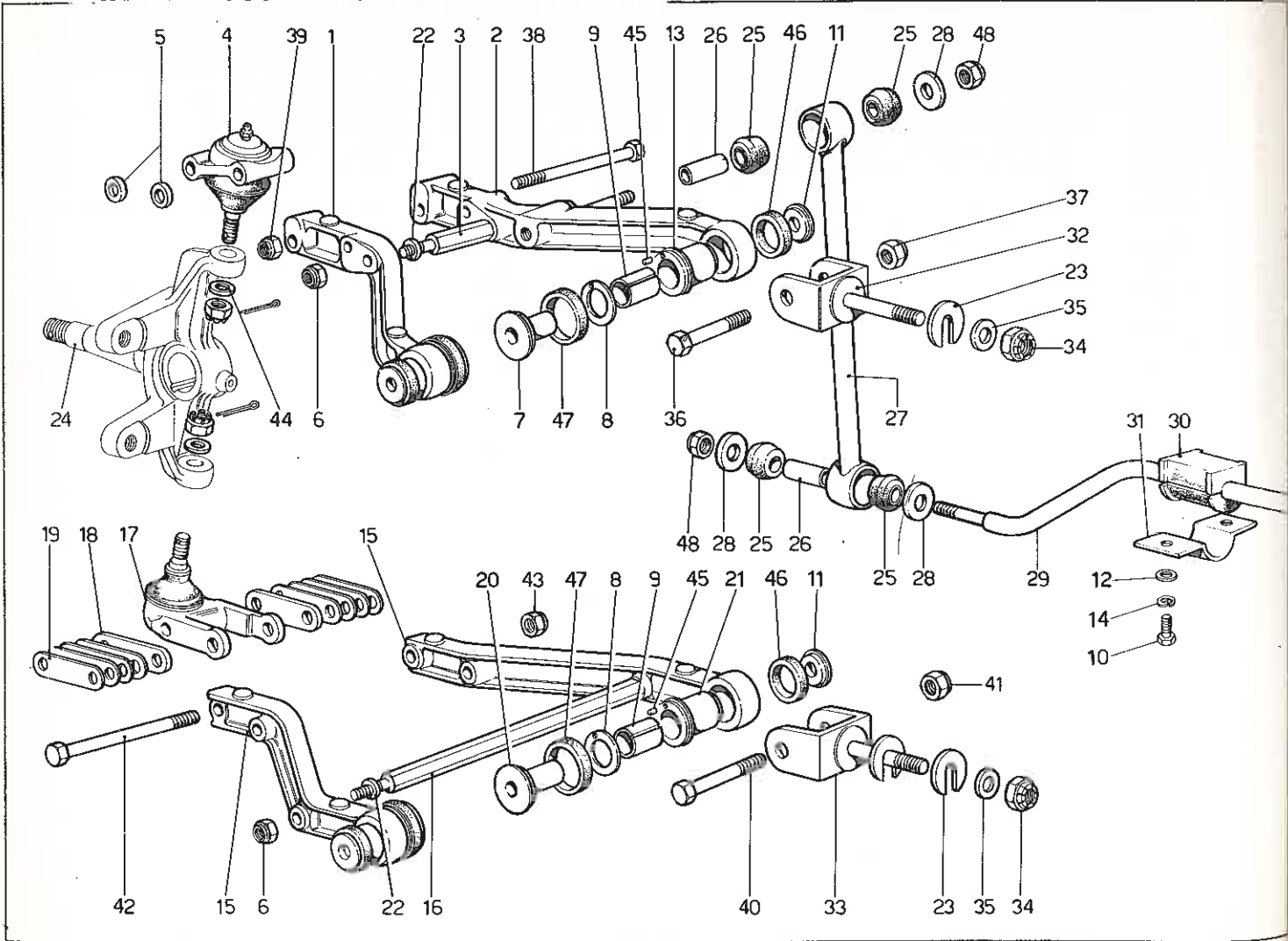


# TAV. 37 - SOSPENSIONE ANTERIORE - AMMORTIZZATORE

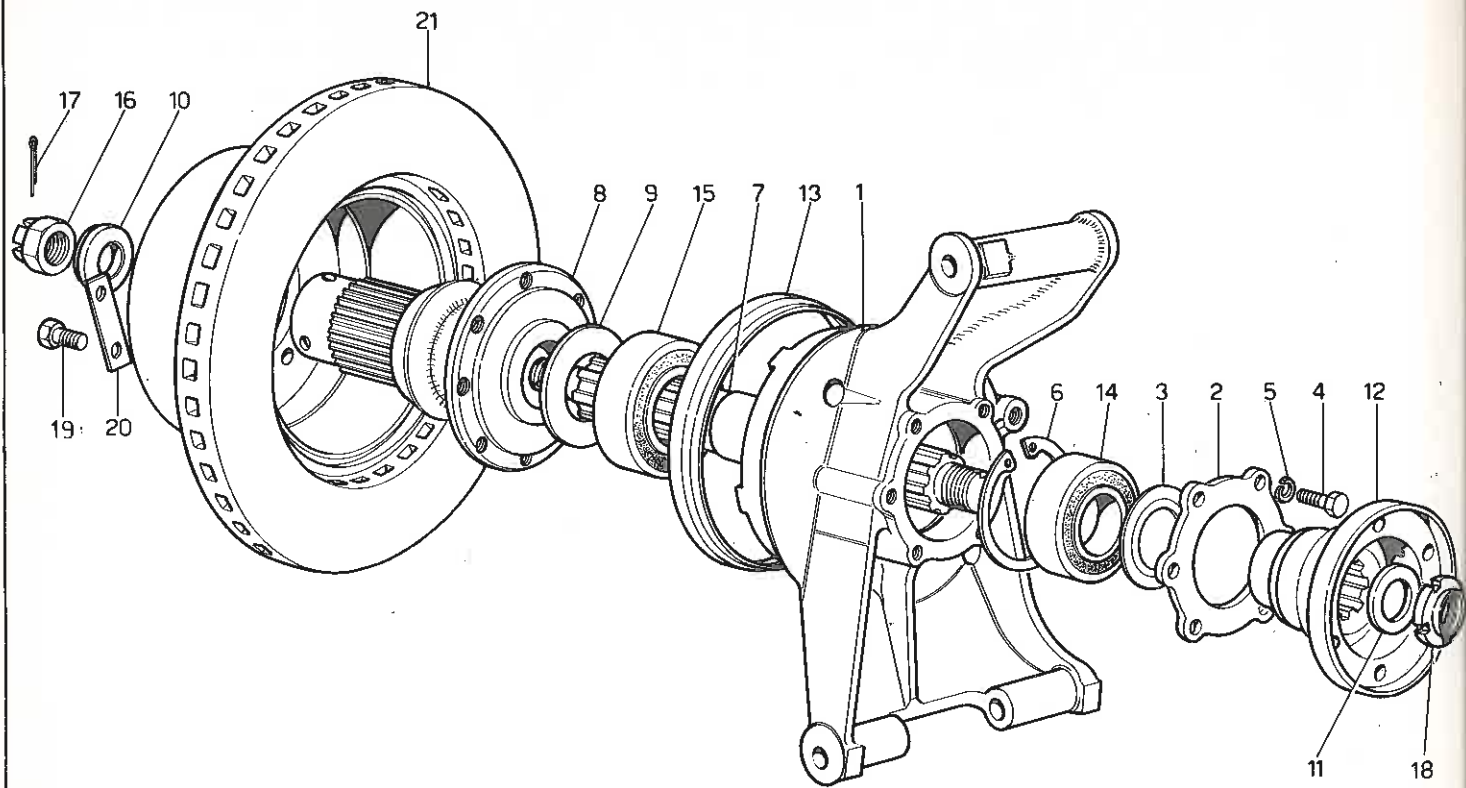




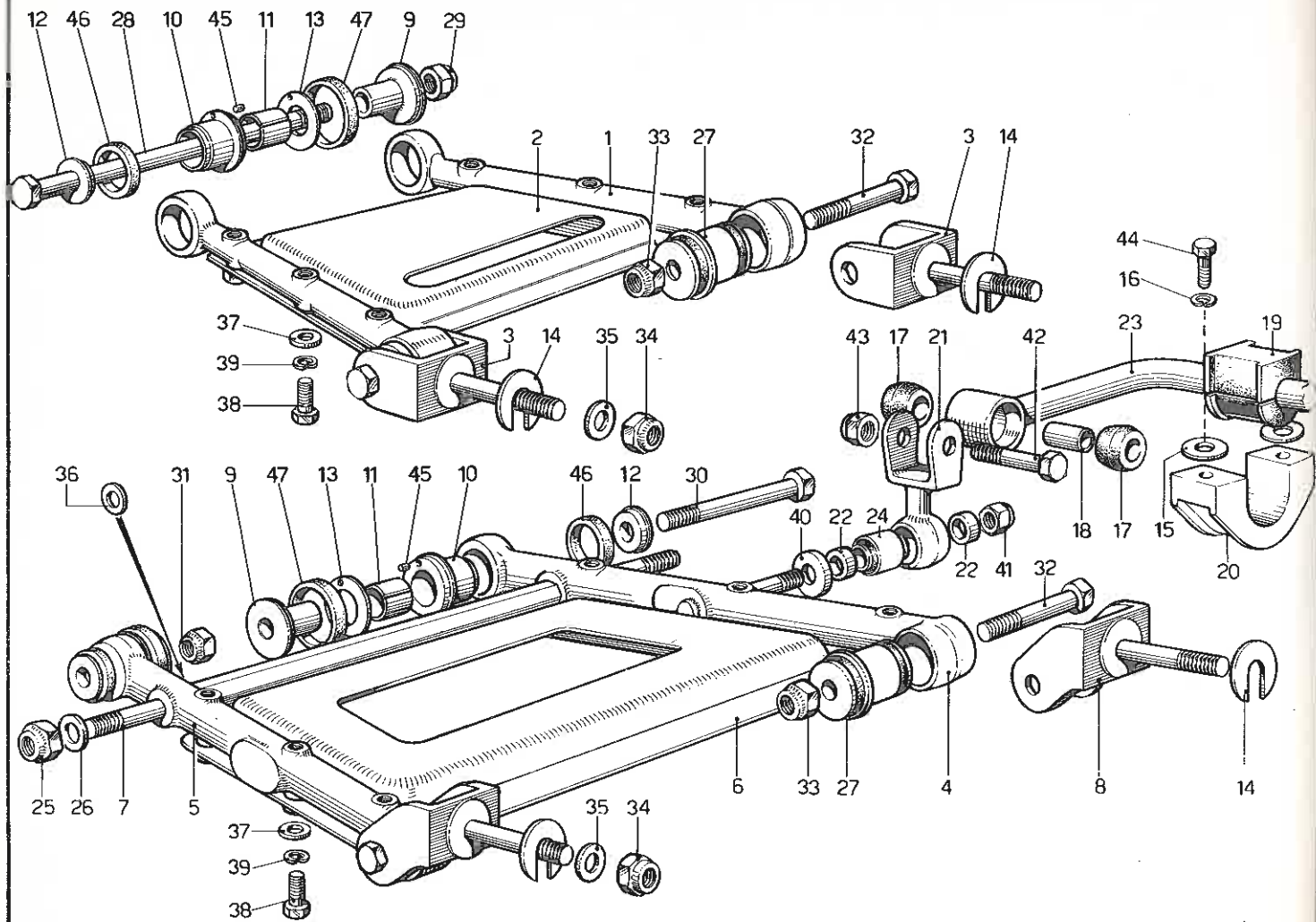
# TAV. 38 - SOSPENSIONE ANTERIORE - LEVE



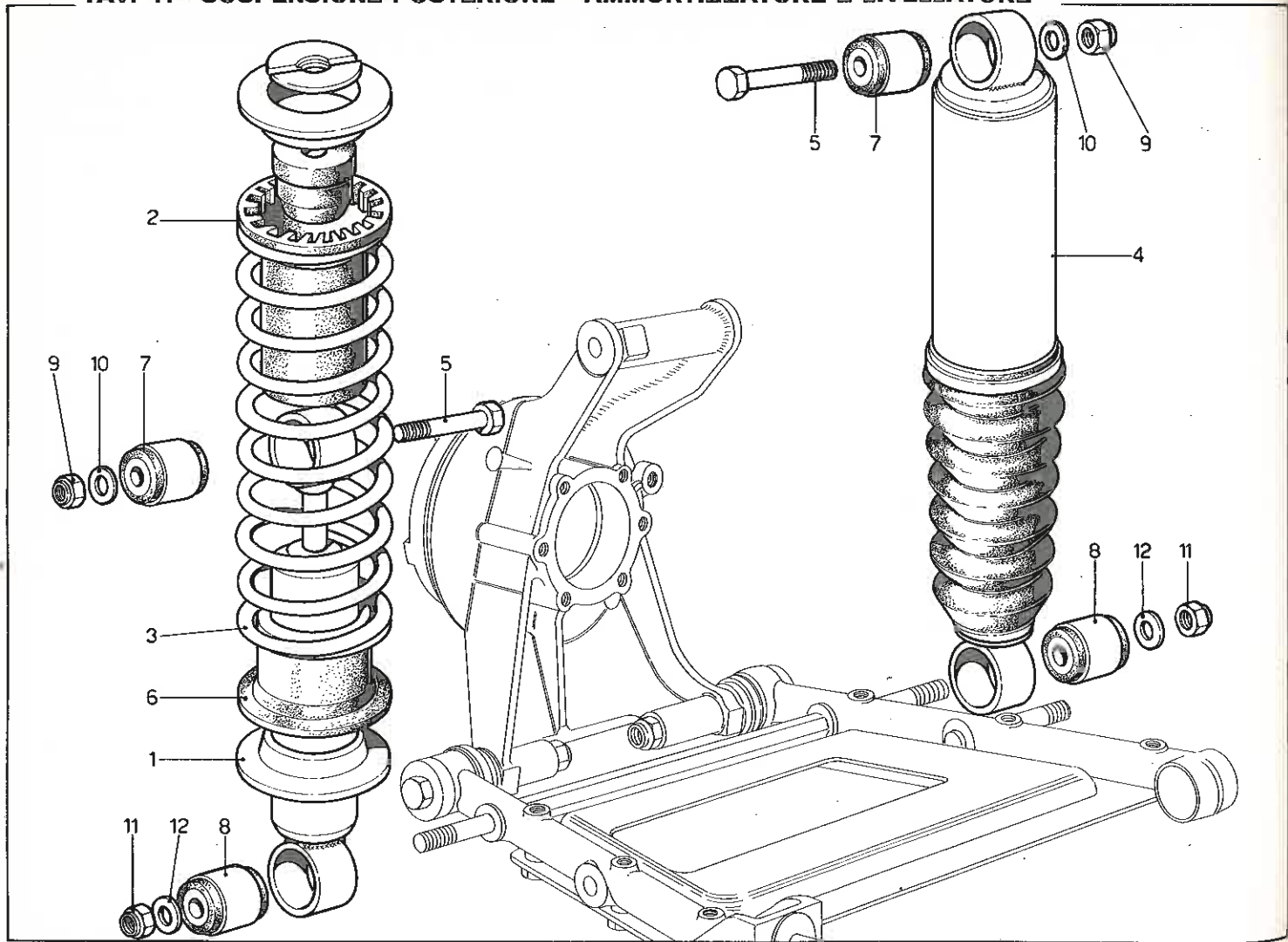
TAV. 39 - SOSPENSIONE POSTERIORE - DISCO FRENO



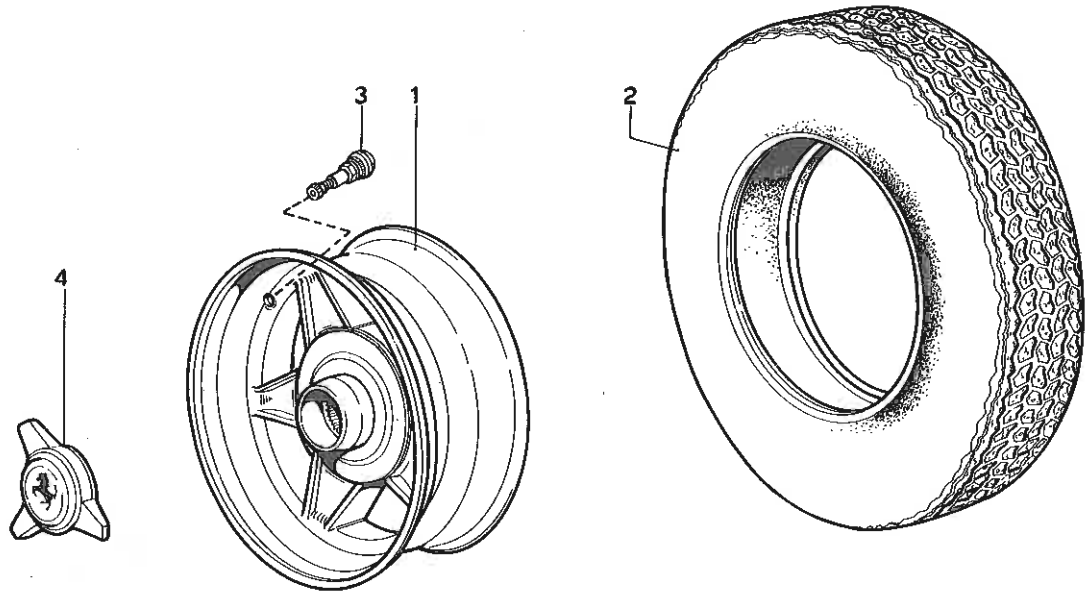
# TAV. 40 - SOSPENSIONE POSTERIORE - LEVE



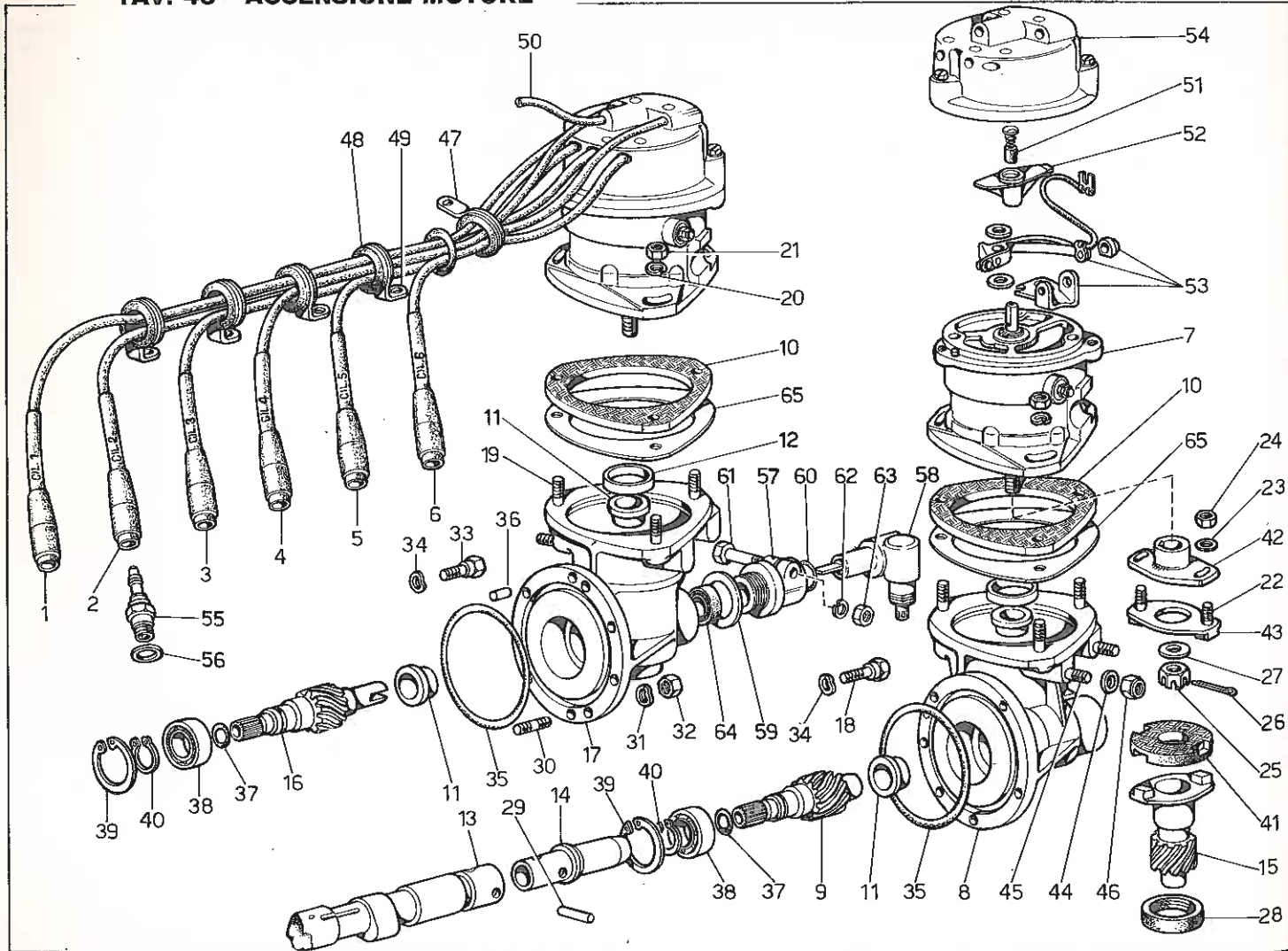
TAV. 41 - SOSPENSIONE POSTERIORE - AMMORTIZZATORE E LIVELLATORE



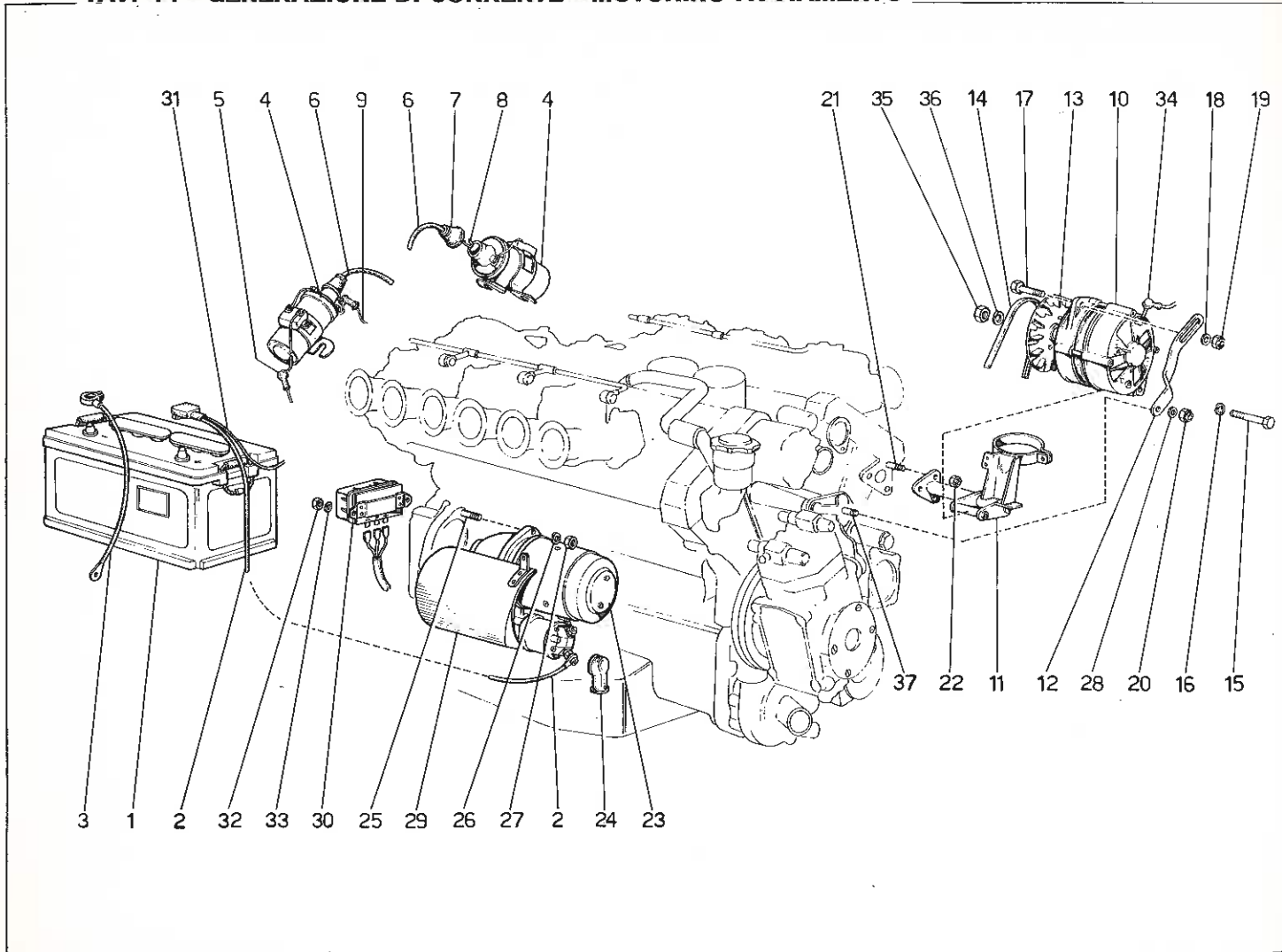
TAV. 42 - RUOTE



# TAV. 43 - ACCENSIONE MOTORE

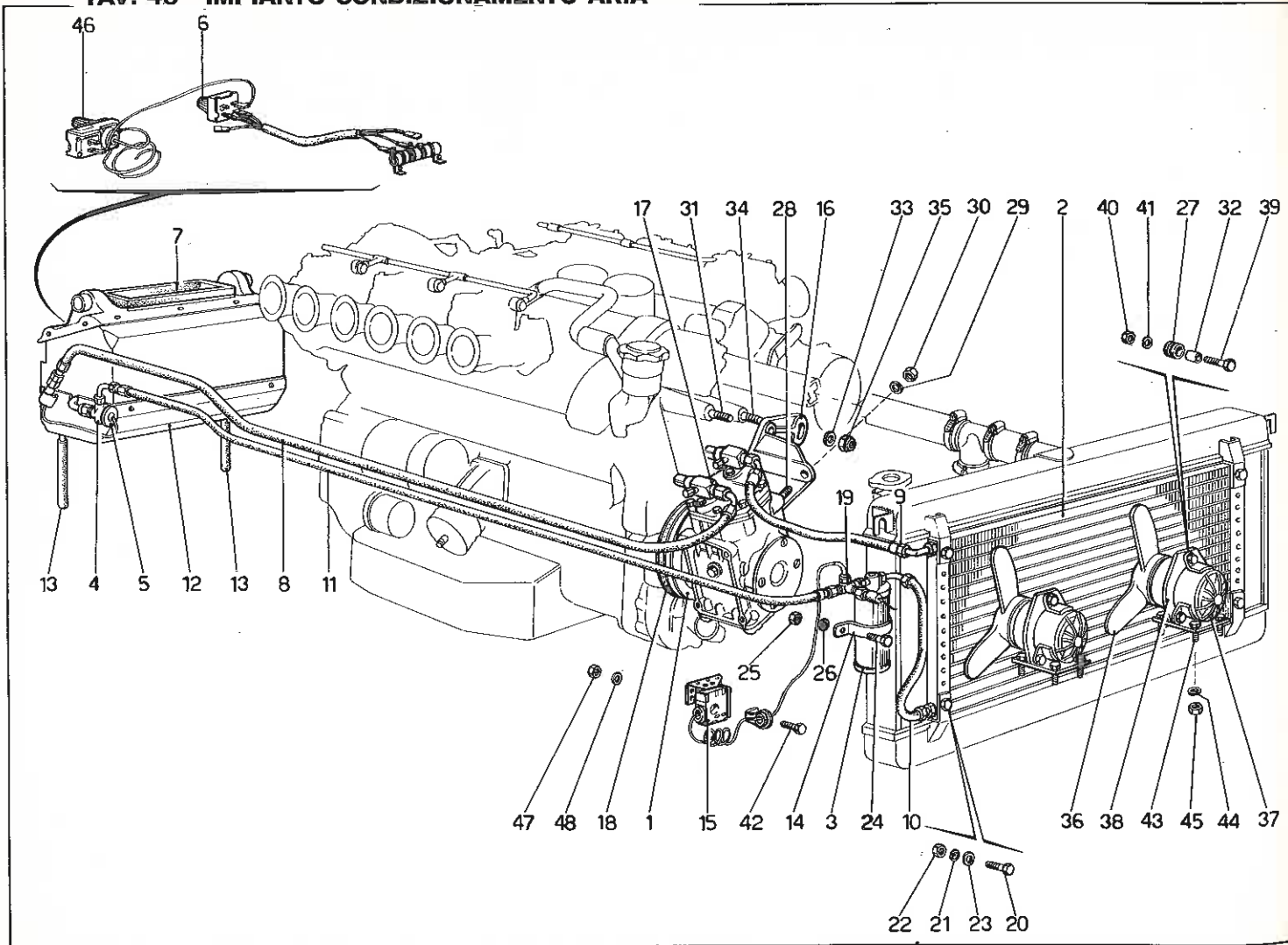


# TAV. 44 - GENERAZIONE DI CORRENTE - MOTORINO AVVIAMENTO

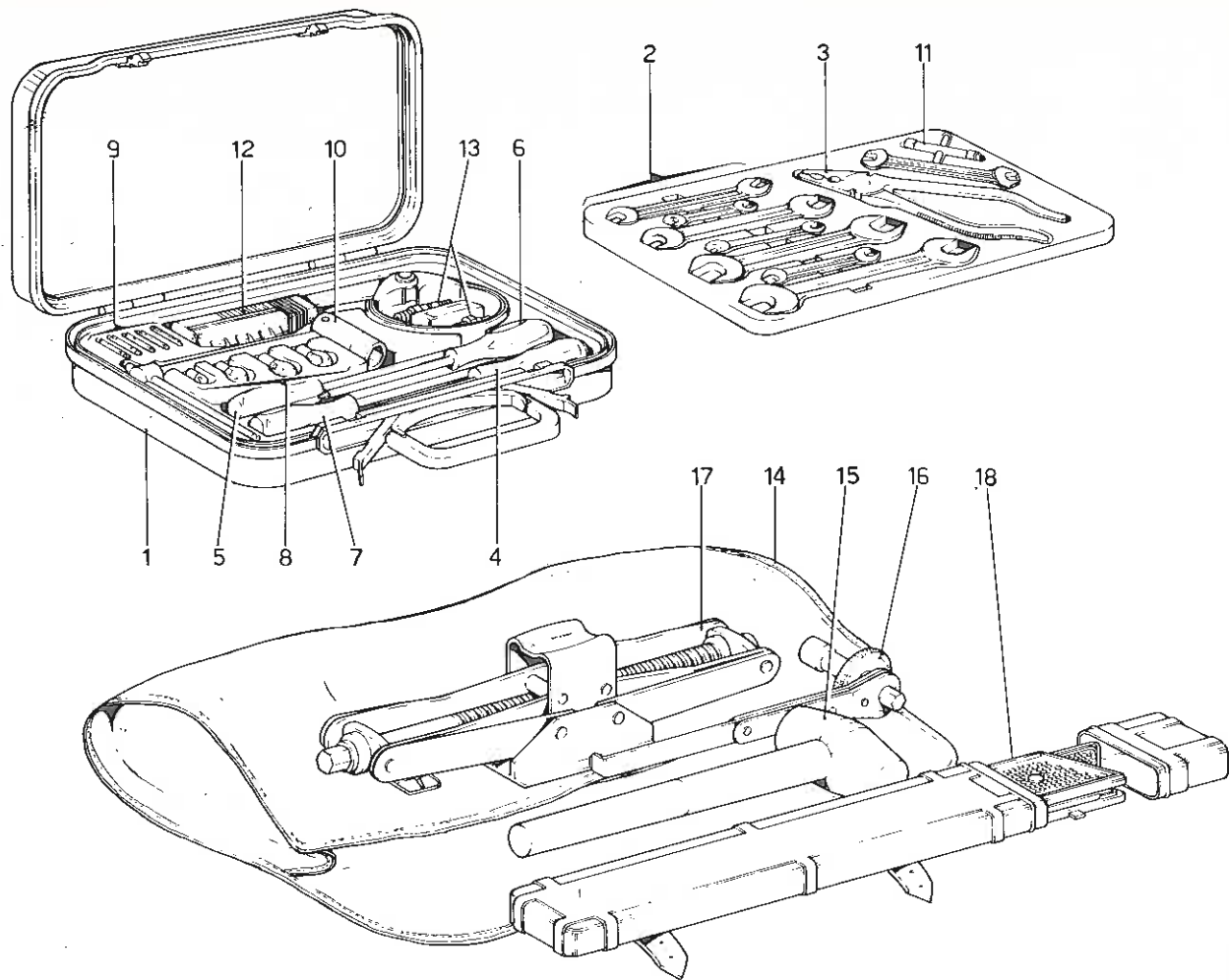




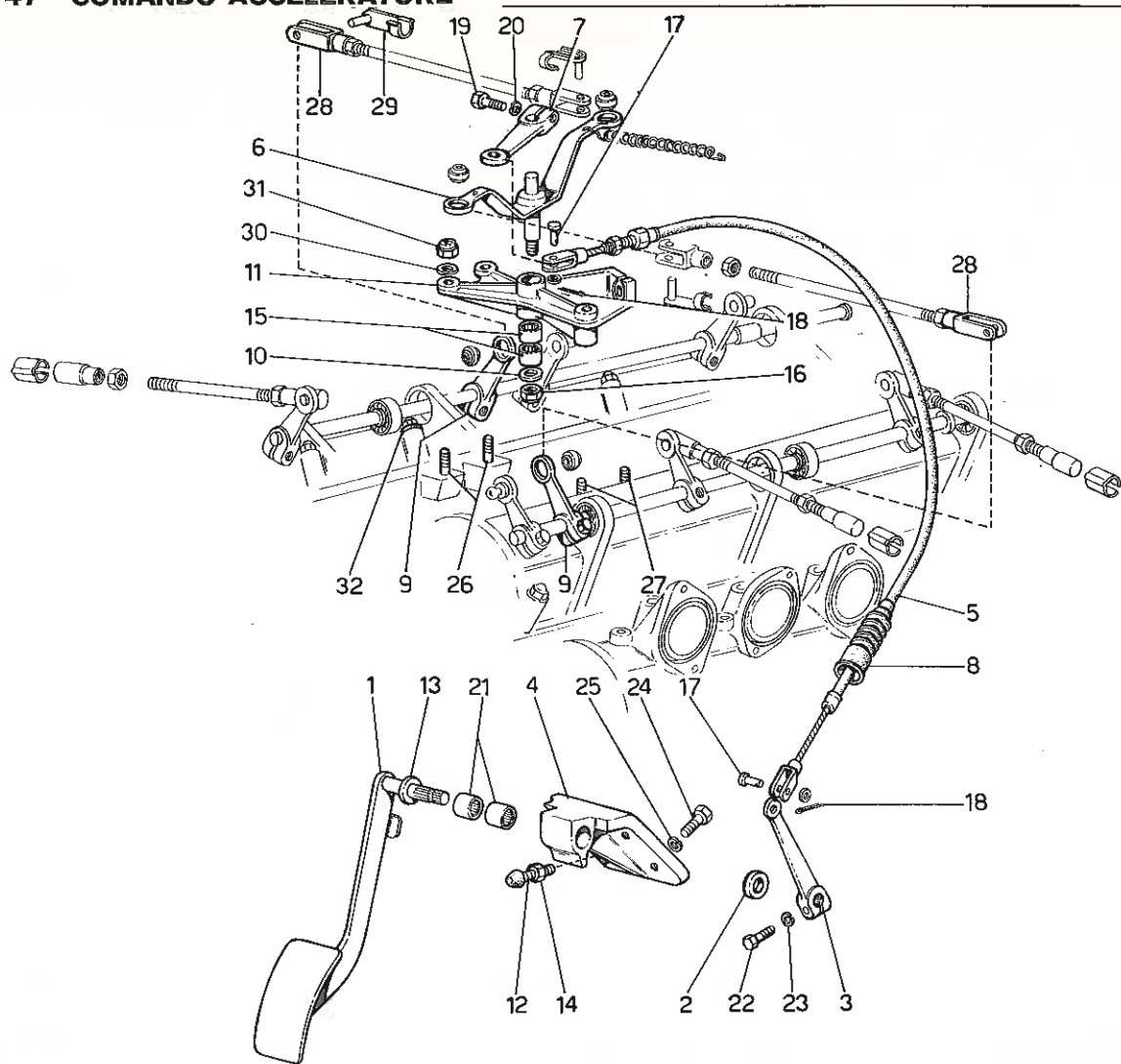
# TAV. 45 - IMPIANTO CONDIZIONAMENTO ARIA



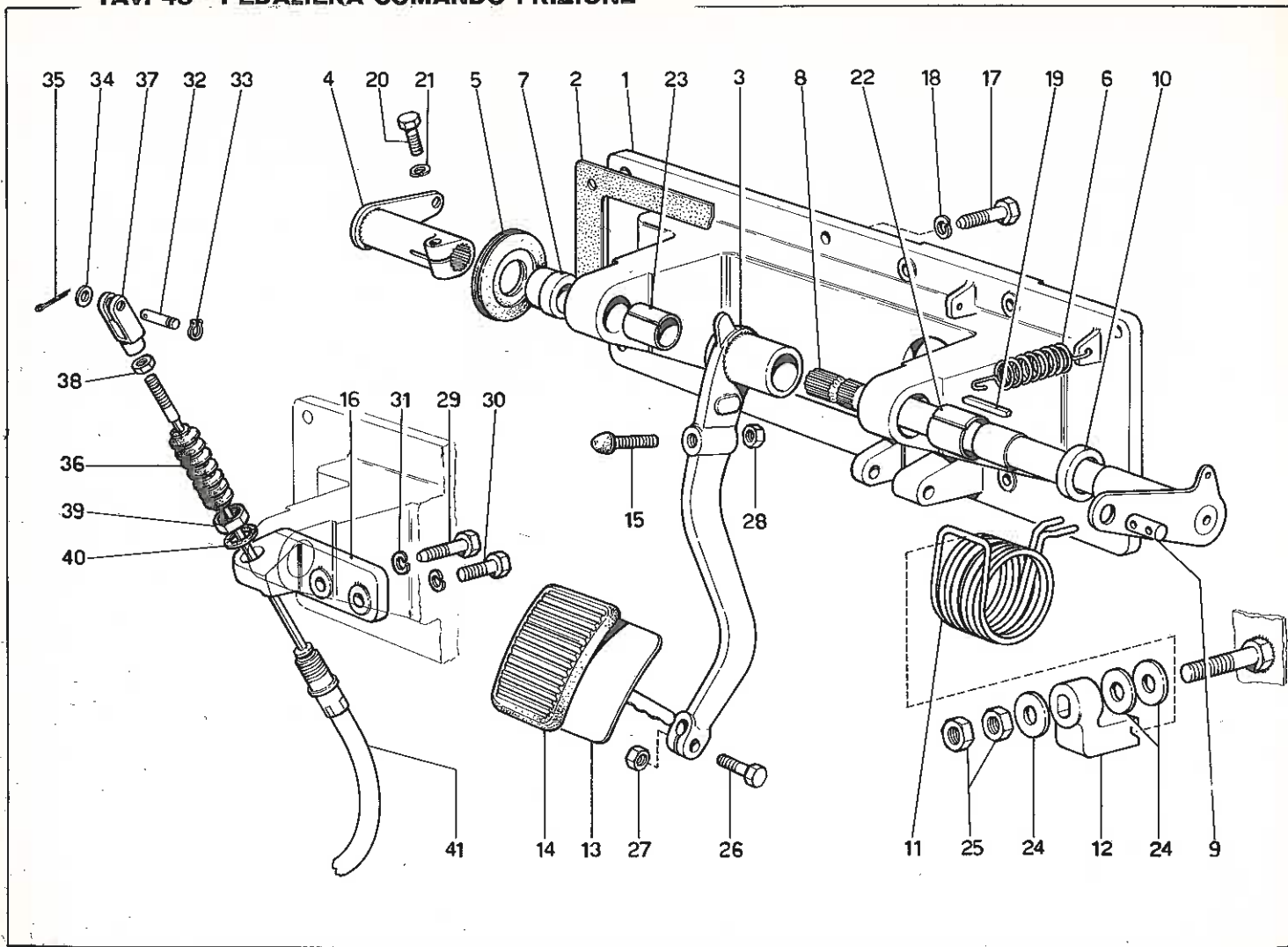
# TAV. 46 - DOTAZIONE ATTREZZI



# TAV. 47 - COMANDO ACCELERATORE



# TAV. 48 - PEDALIERA COMANDO FRIZIONE



# TAV. 49 - COMANDO IDRAULICO FRENI

