

**CATALOGO PARTI  
DI RICAMBIO**

**SPARE PARTS  
CATALOGUE**

**CATALOGUE  
DES PIÈCES DE  
RECHANGE**

**365GT2+**

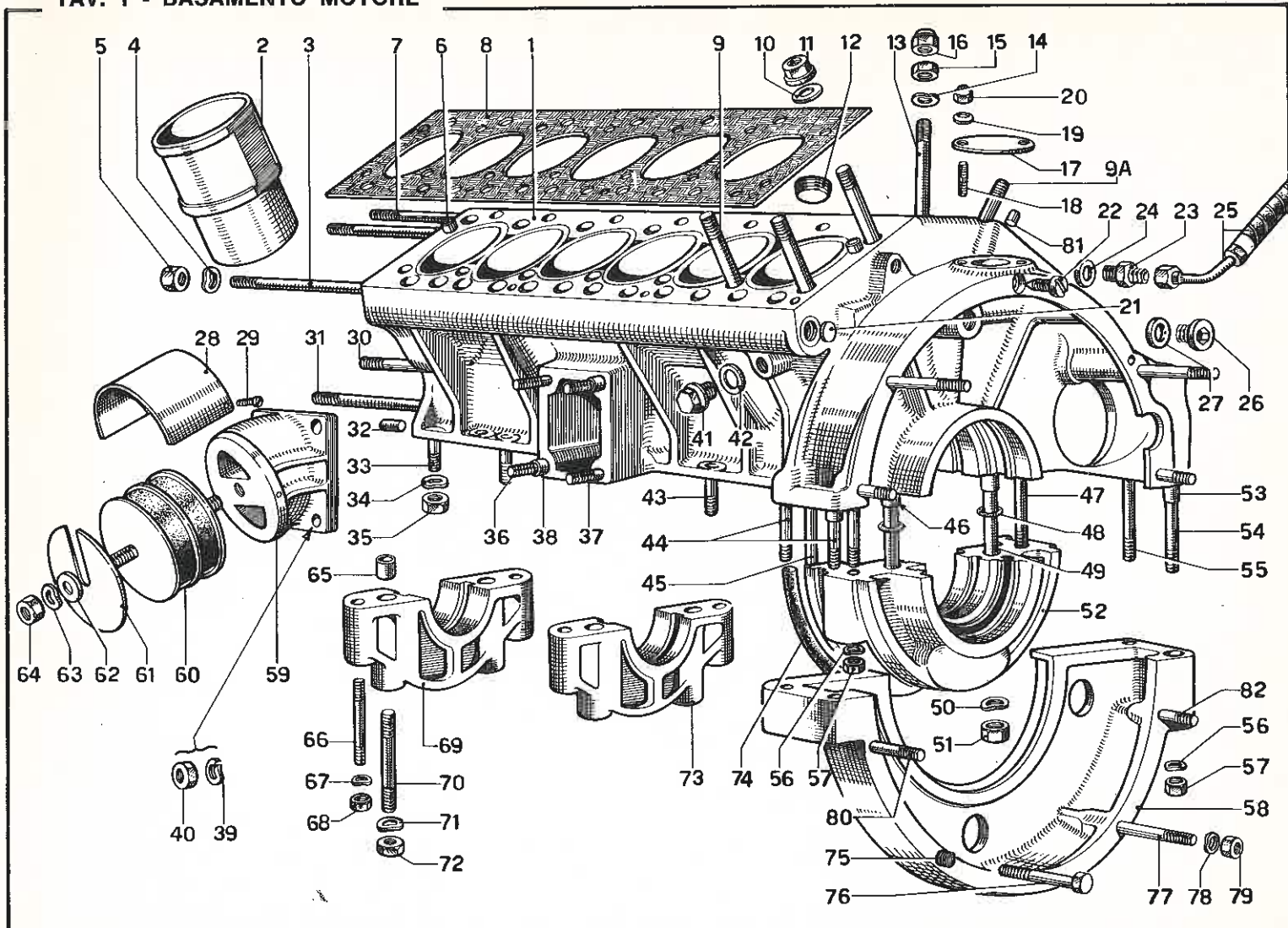
**1968**

**Ferrari**

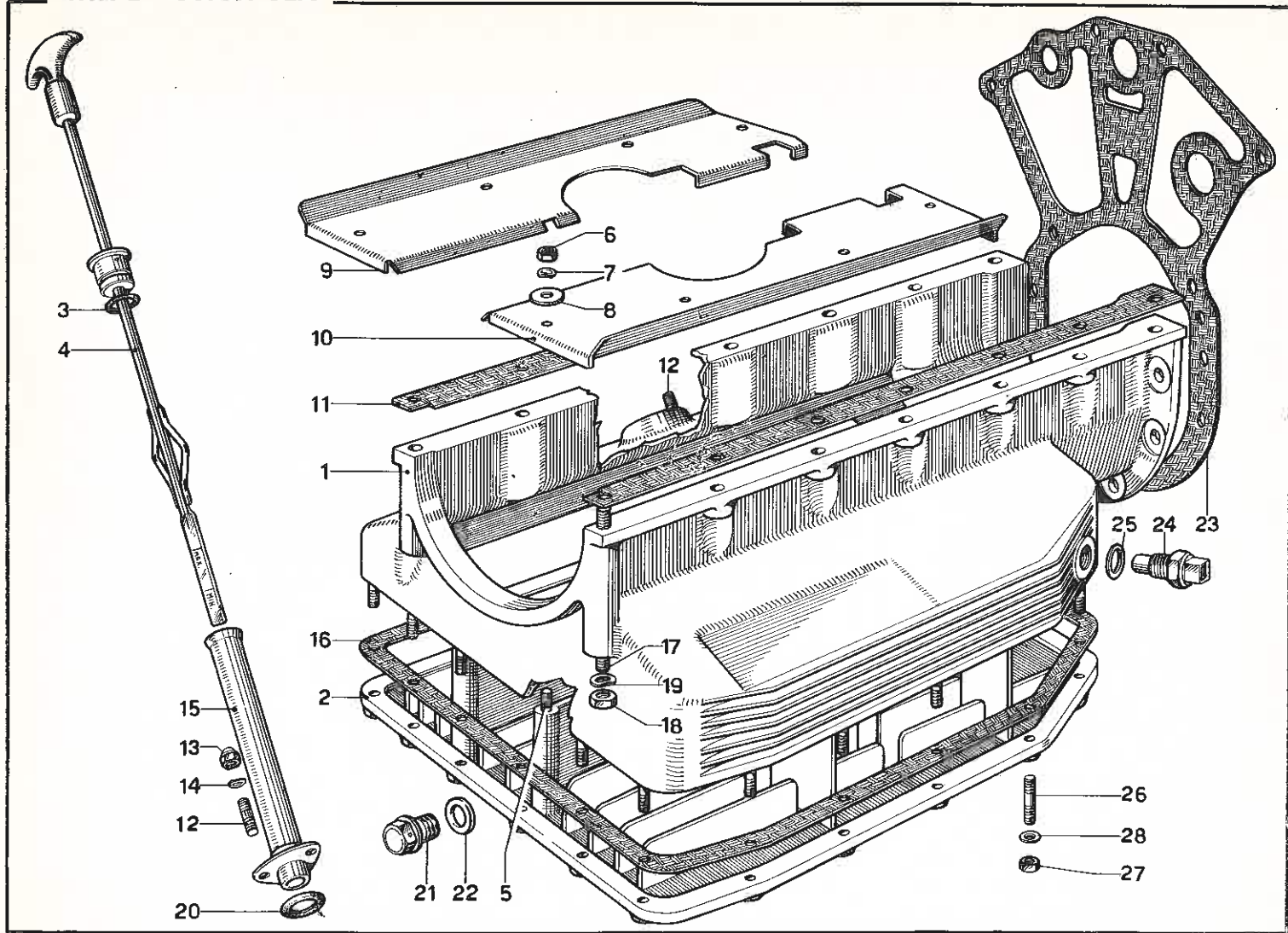
## List of tables

- Table 1** - Crankase
- Table 2** - Oil sump
- Table 3** - Crankshaft, connecting rods and pistons
- Table 4** - Cylinder head (Right)
- Table 5** - Cylinder head (Left)
- Table 6** - Weber 40 DF1/5 carburettor
- Table 7** - Air inlet with blow-by
- Table 8** - Feeding and controls
- Table 9** - Throttle pedal
- Table 10** - Exhaust pipes assembly
- Table 11** - Timing (Controls)
- Table 12** - Timing (Accessories)
- Table 13** - Hydraulic steering pump and controls
- Table 14** - Oil pump and filters
- Table 15** - Oil pressure valve
- Table 16** - Distributors and controls
- Table 17** - Generator and battery
- Table 18** - Clutch and controls
- Table 19** - Gear box
- Table 20** - Lay shaft
- Table 21** - Output shaft
- Table 22** - Countershaft
- Table 23** - Gear box controls
- Table 24** - Rear gear box housing
- Table 25** - Transmission shaft
- Table 26** - Differential - Pinion and crown
- Table 27** - Rear axle and axle
- Table 28** - Rear suspension
- Table 29** - Rear suspension - Damper and self-levelling unit
- Table 30** - Front wheel suspension - Upper arms
- Table 31** - Front wheel suspension - Bottom arms
- Table 32** - Pedal board - Clutch control
- Table 33** - Pedal board - Brake control
- Table 34** - Brake system scheme
- Table 35** - Front brake disc and master-cylinder
- Table 36** - Front and rear brakes' calipers
- Table 37** - Hand-brake control
- Table 38** - Rear brake disc and wheel
- Table 39** - Steering column
- Table 40** - Steering linkage
- Table 41** - Radiator and water pump
- Table 42** - Fuel tanks
- Table 43** - Air conditioning
- Table 44** - Air conditioning layout scheme
- Table 45** - Tool-kit

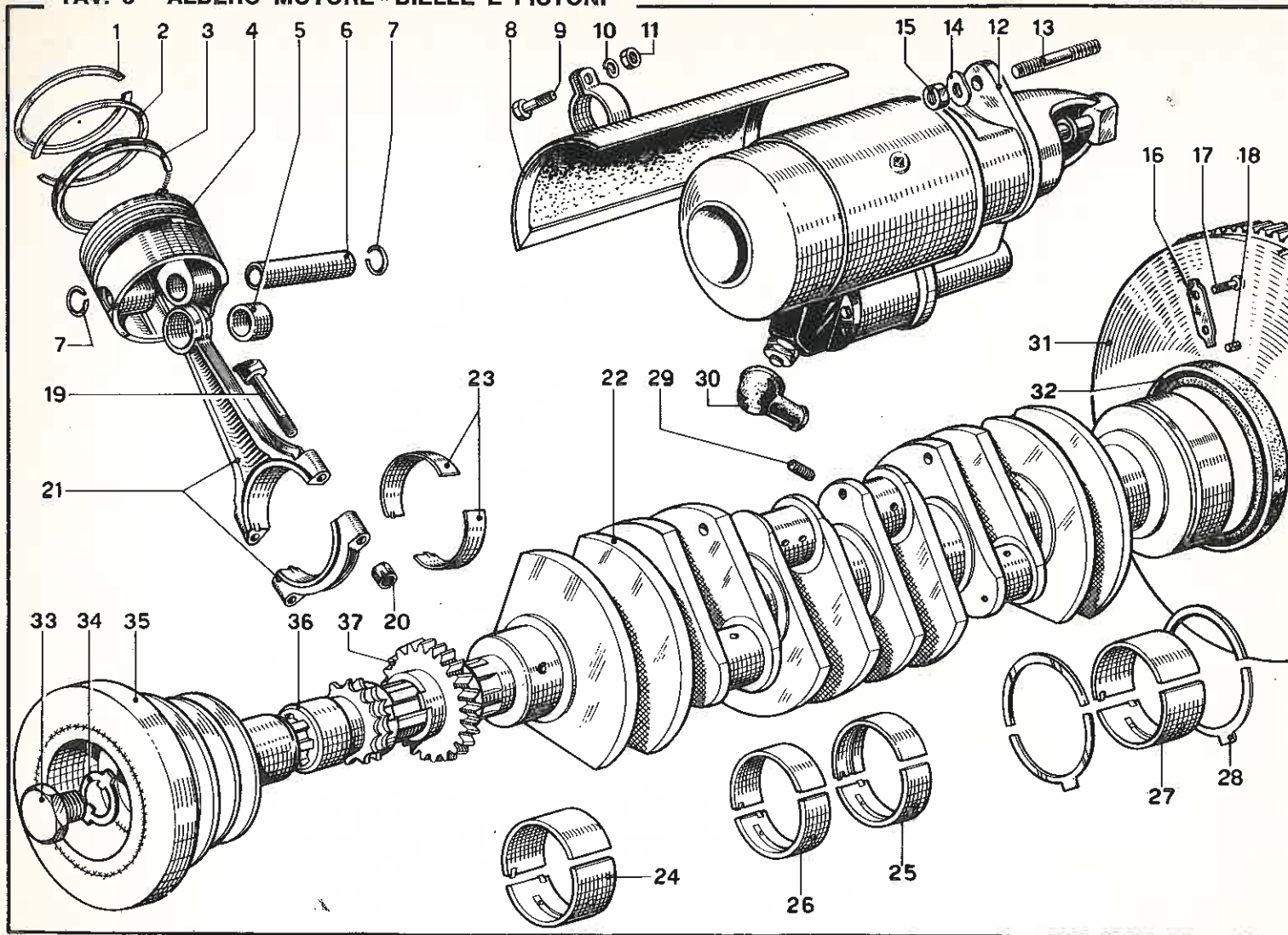
TAV. 1 - BASAMENTO MOTORE



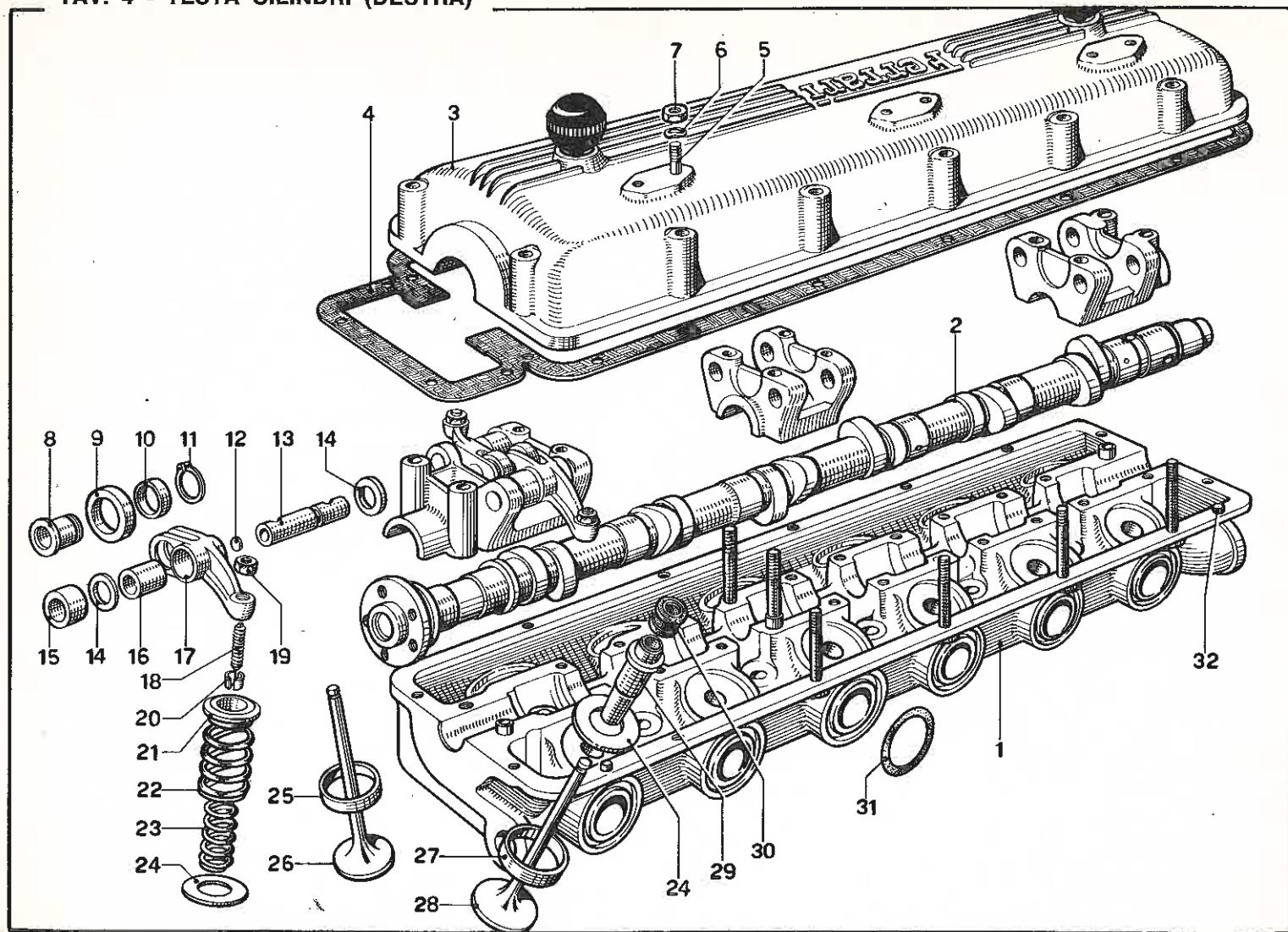
TAV. 2 - COPPA OLIO



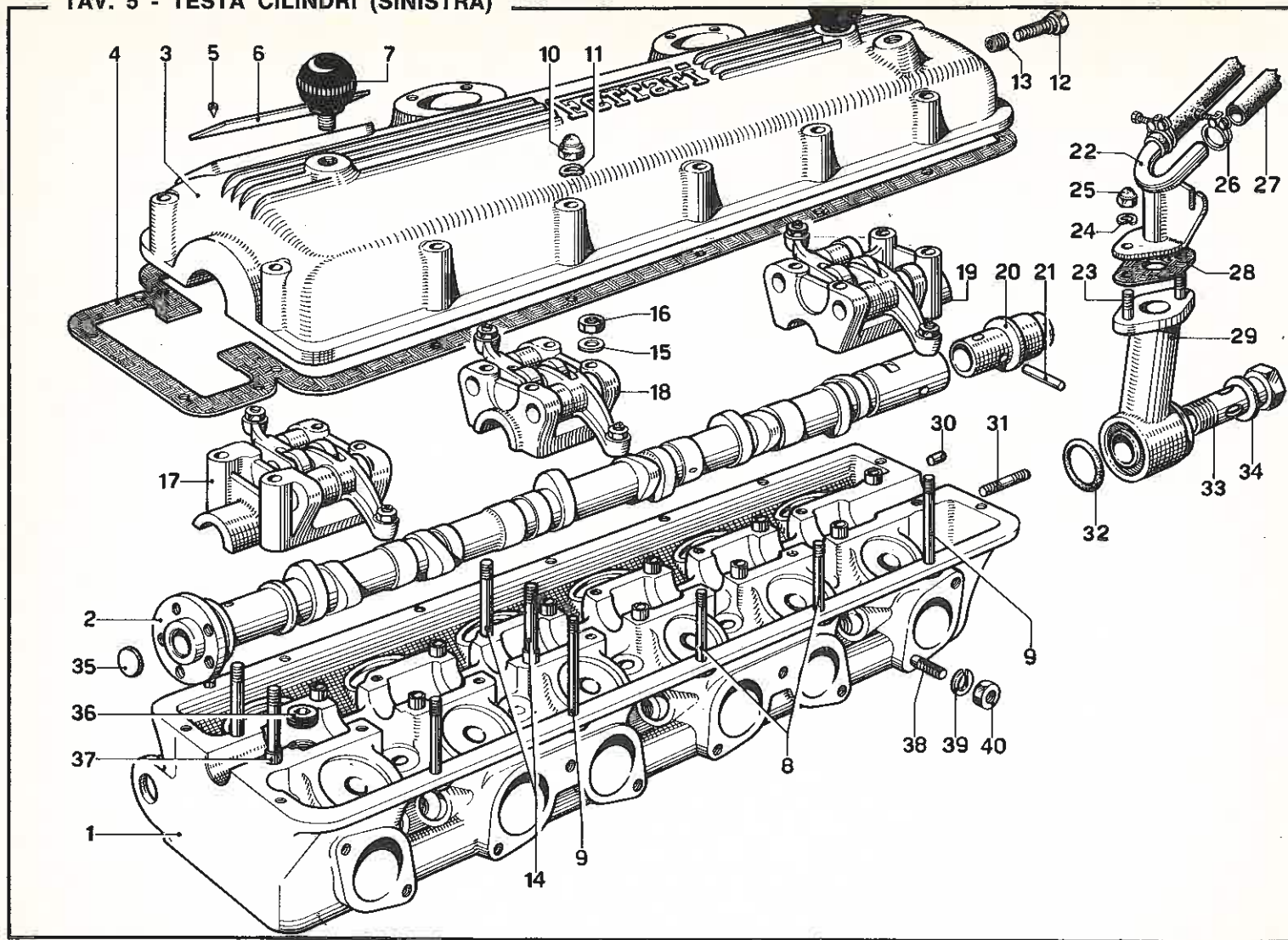
TAV. 3 - ALBERO MOTORE - BIELLE E PISTONI



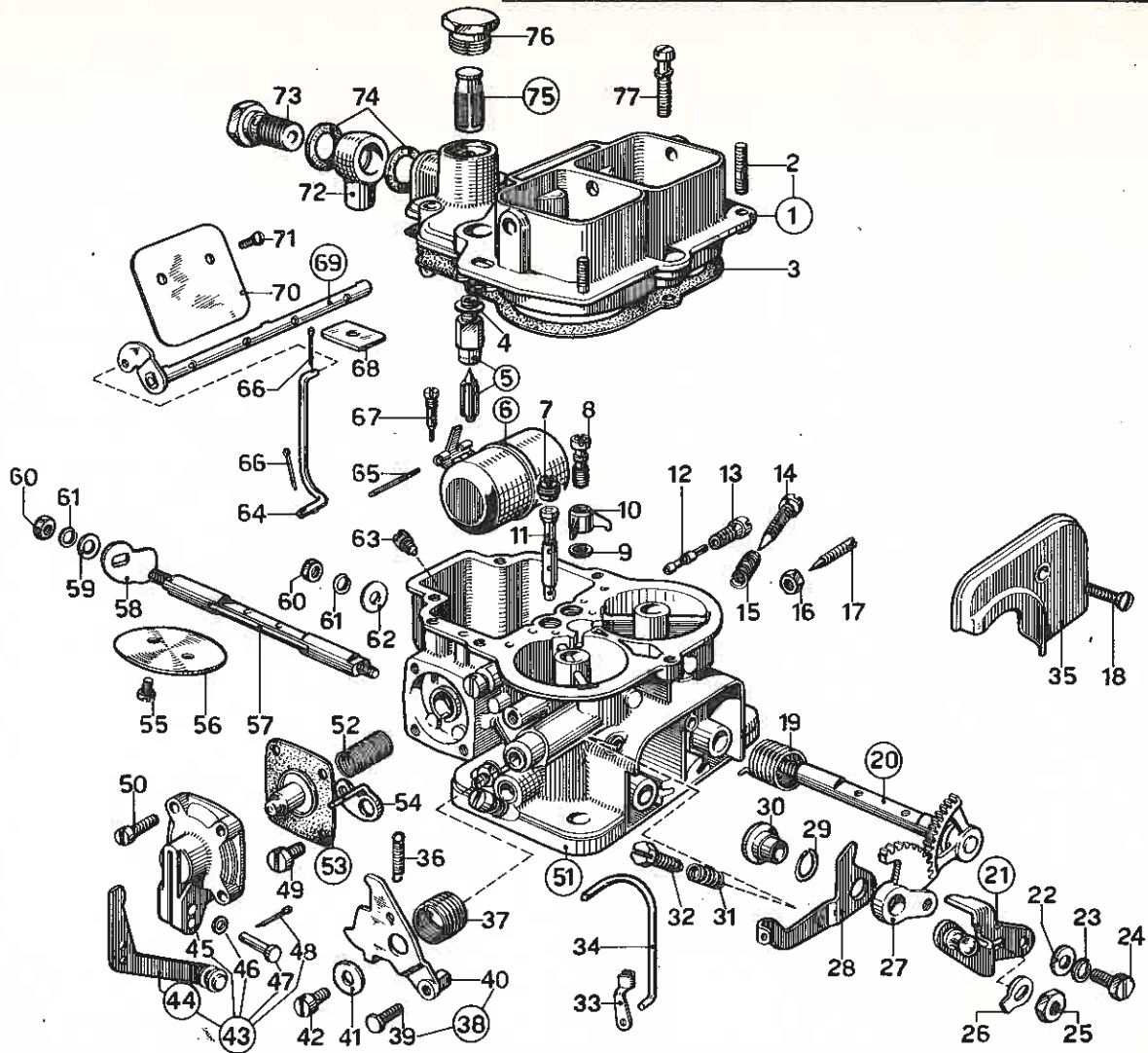
TAV. 4 - TESTA CILINDRI (DESTRA)



TAV. 5 - TESTA CILINDRI (SINISTRA)

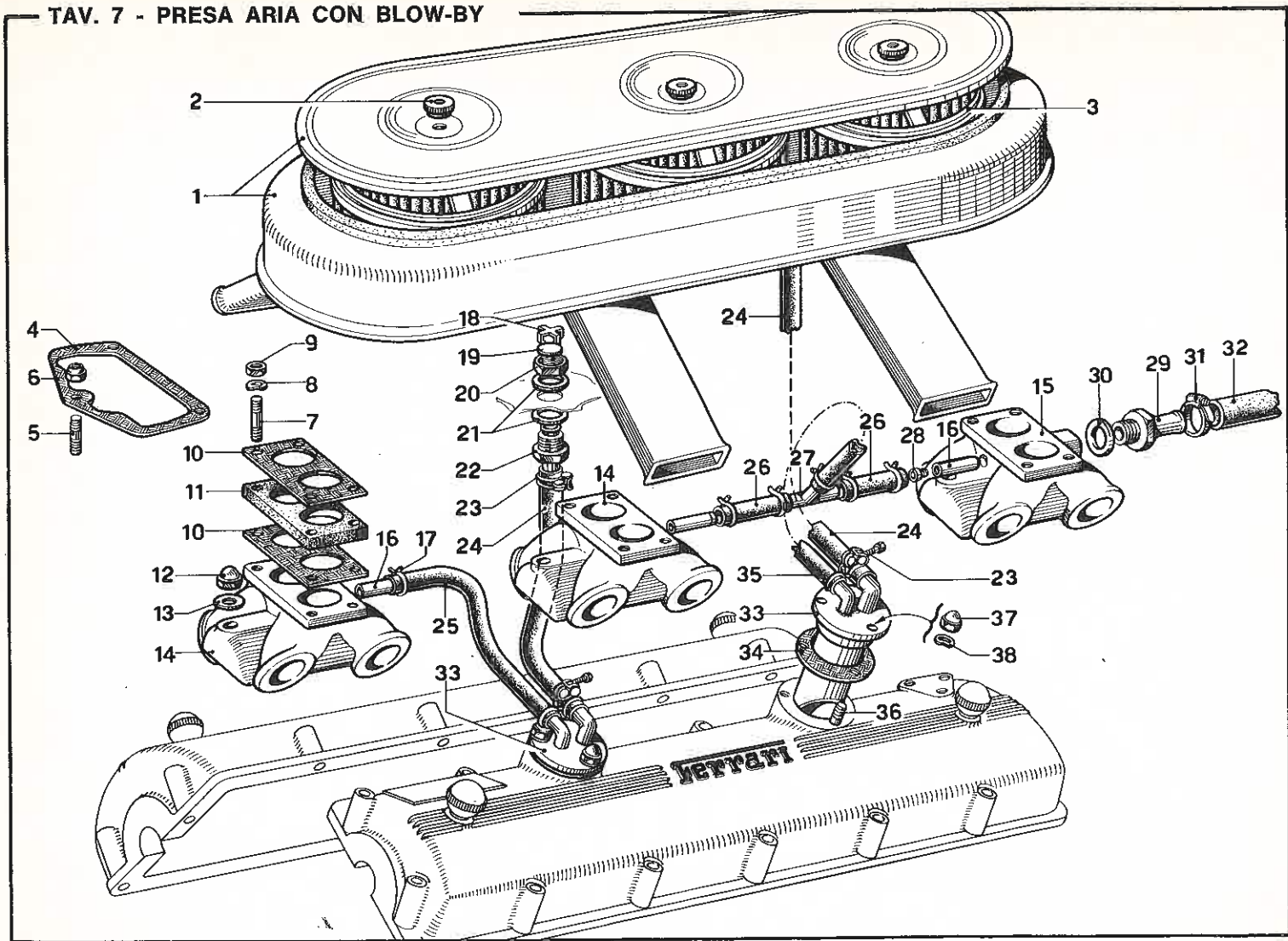


TAV. 6 - CARBURATORE WEBER 40DFI/5

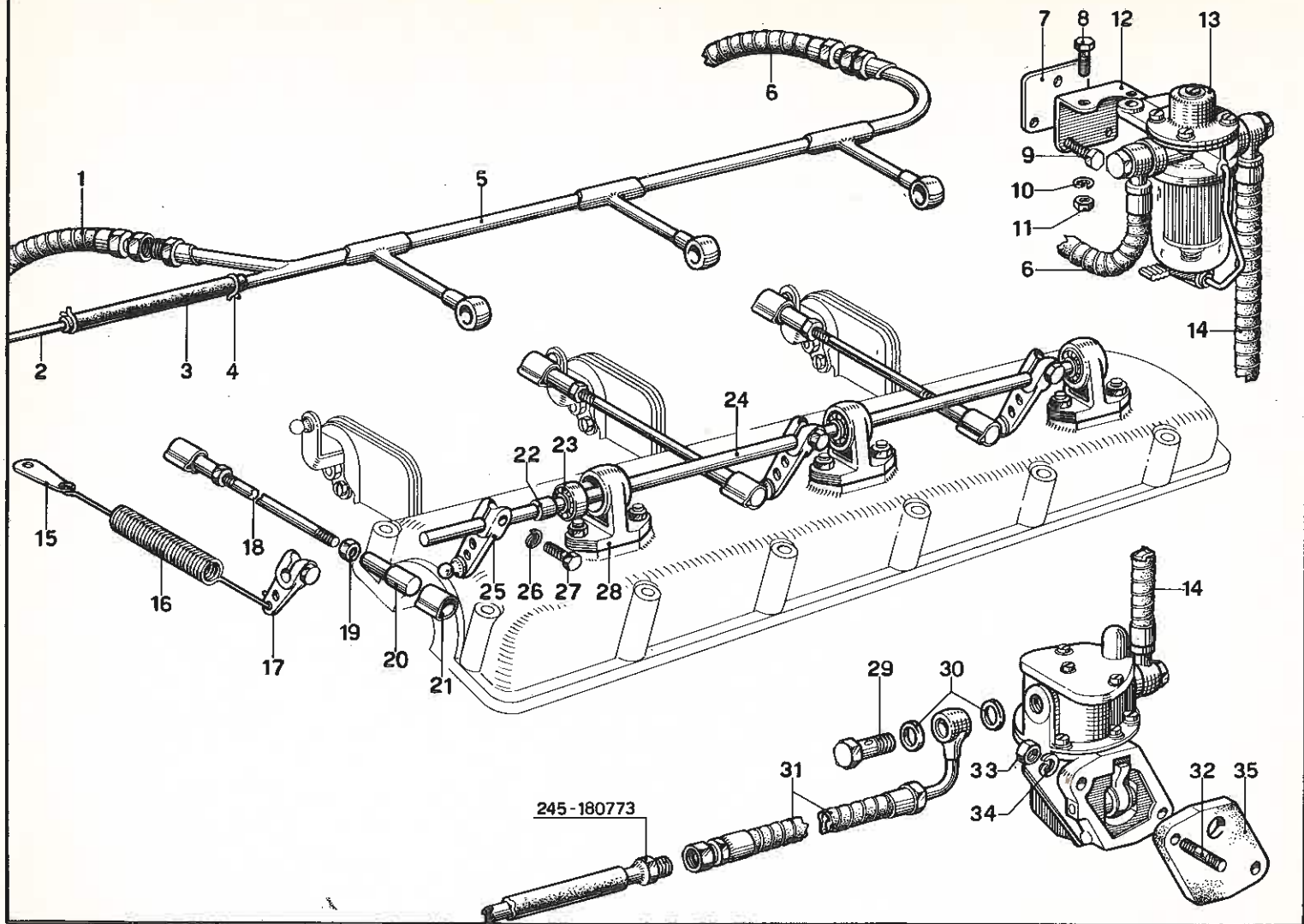




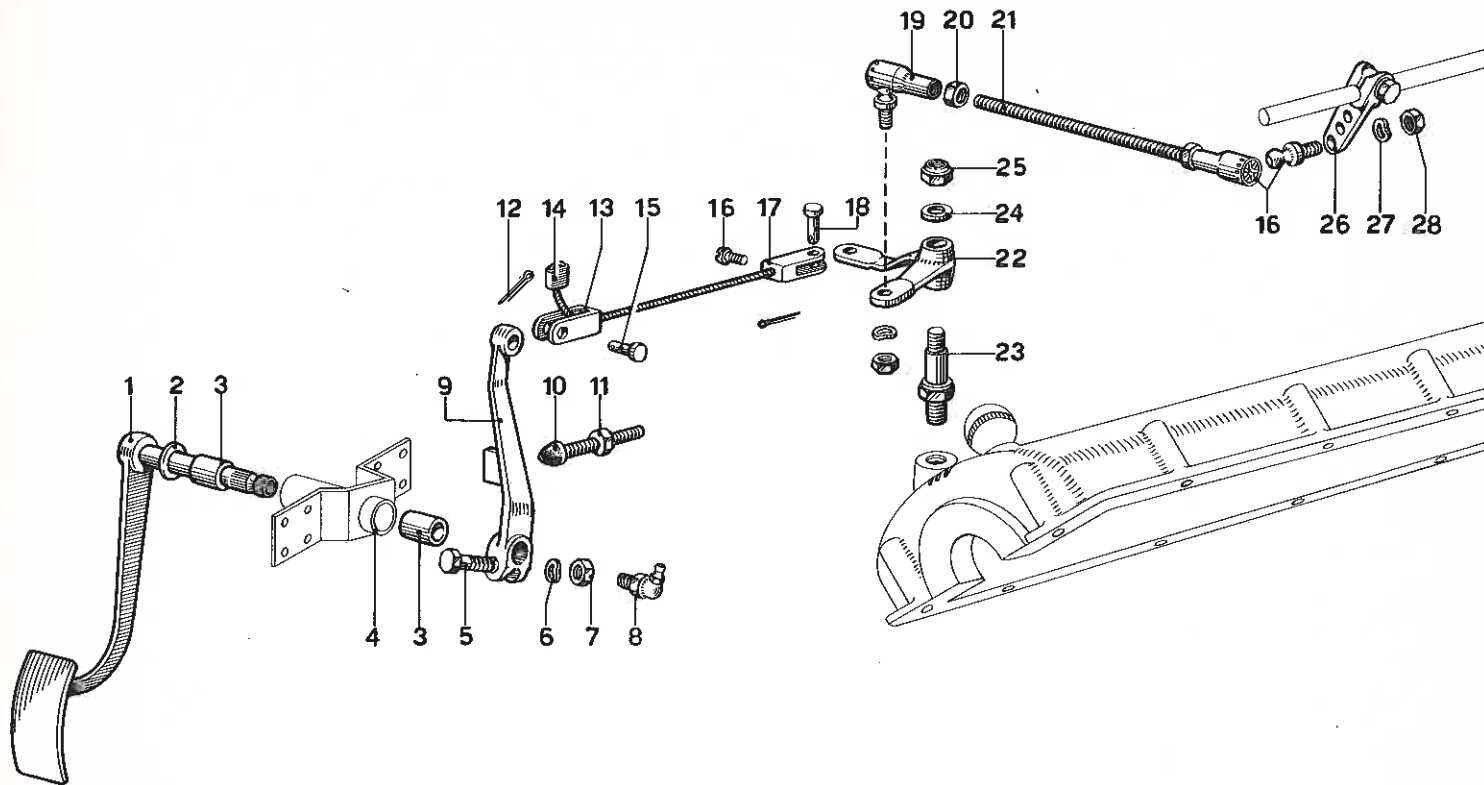
TAV. 7 - PRESA ARIA CON BLOW-BY



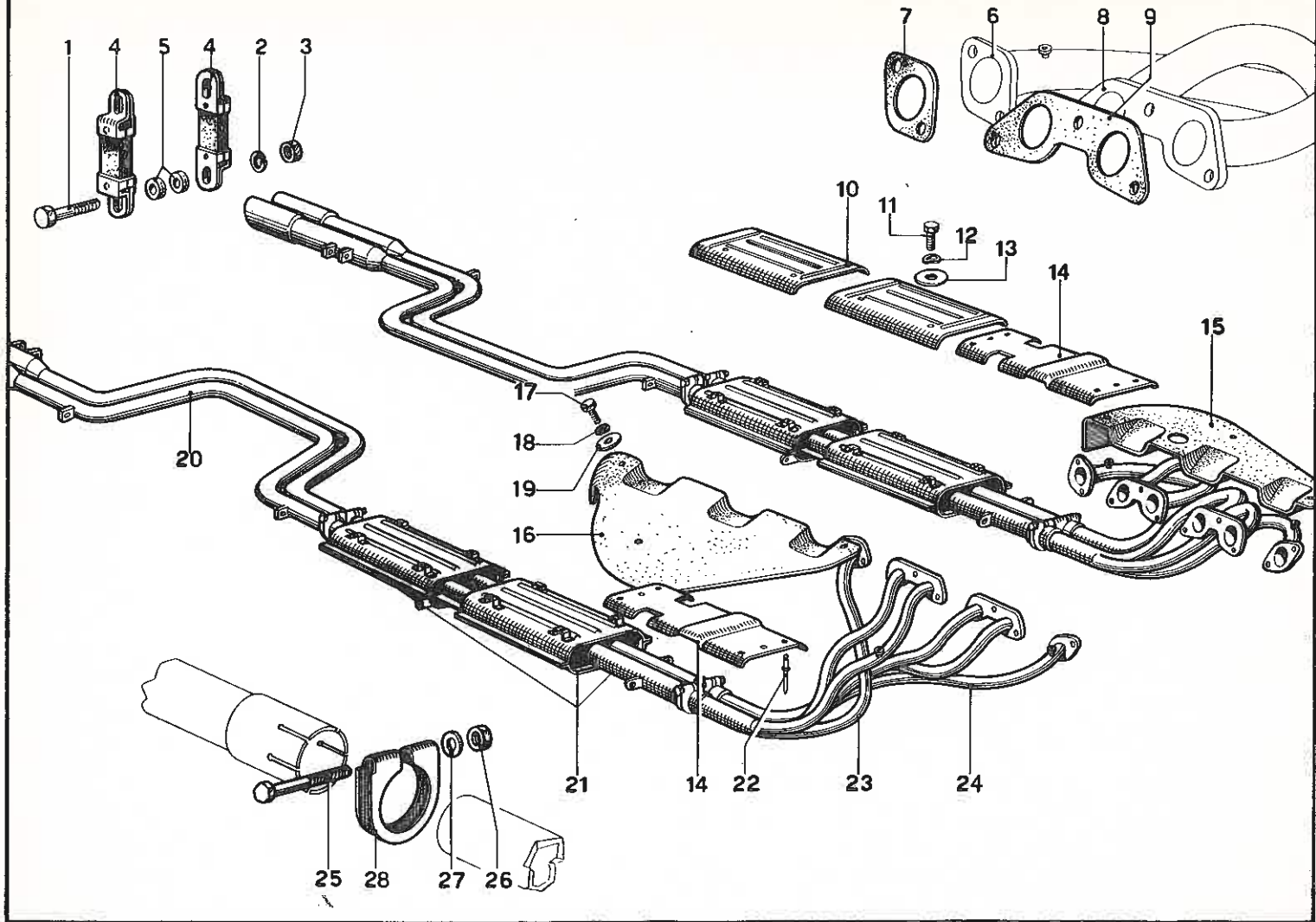
TAV. 8 - ALIMENTAZIONE E COMANDI



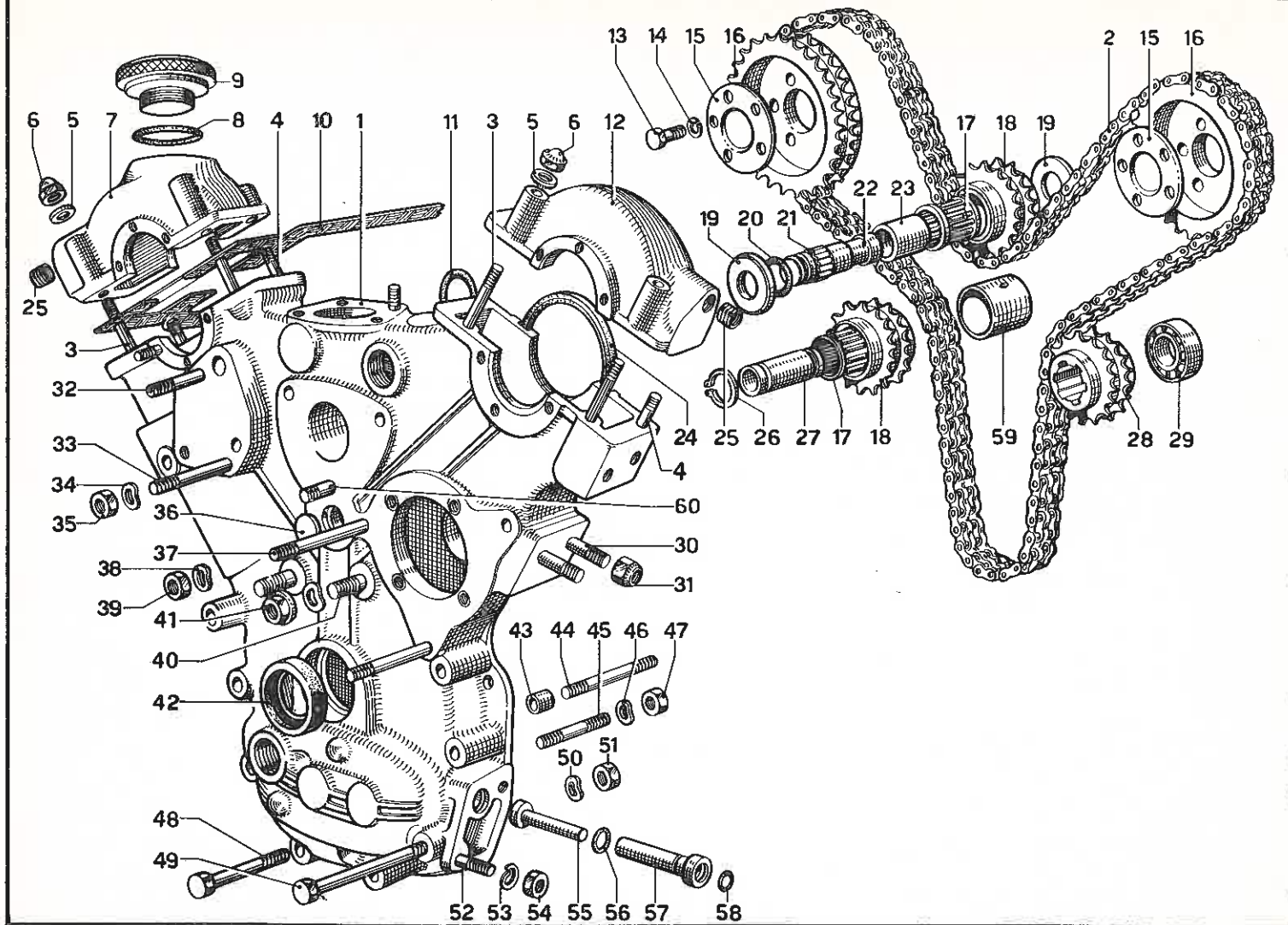
TAV. 9 - PEDALE ACCELERATORE



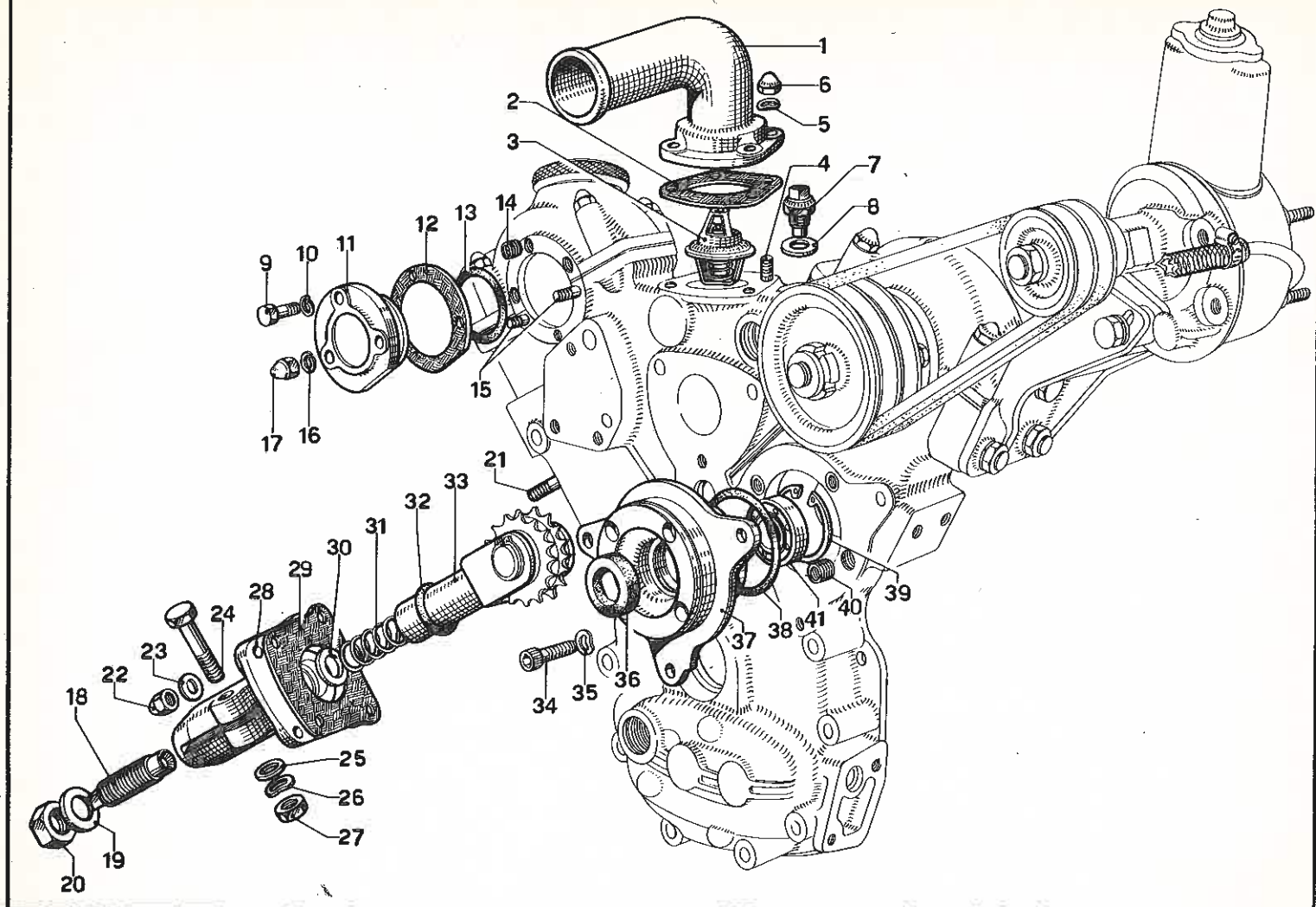
TAV. 10 - IMPIANTO SCARICO



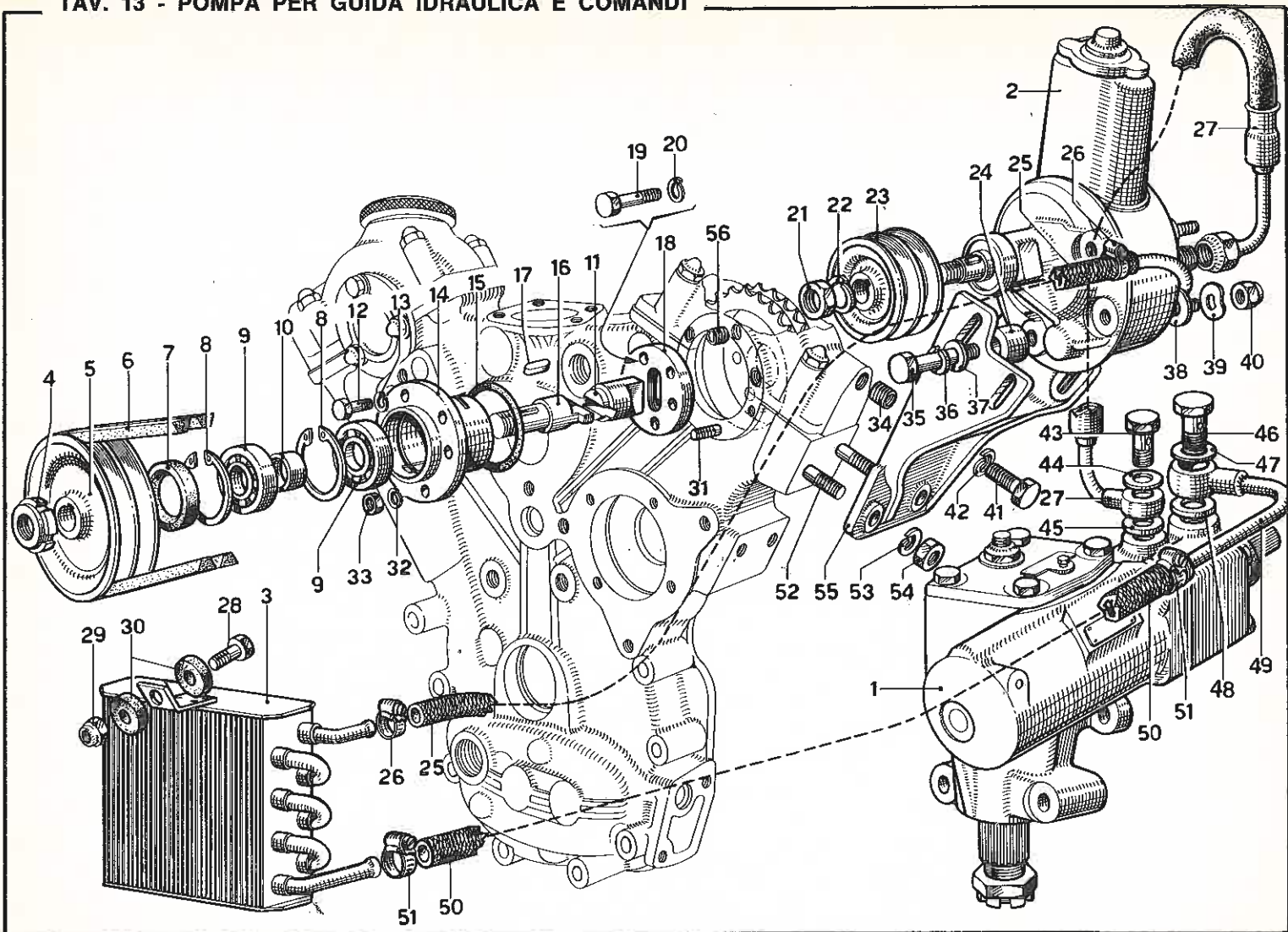
TAV. 11 - DISTRIBUZIONE - COMANDI



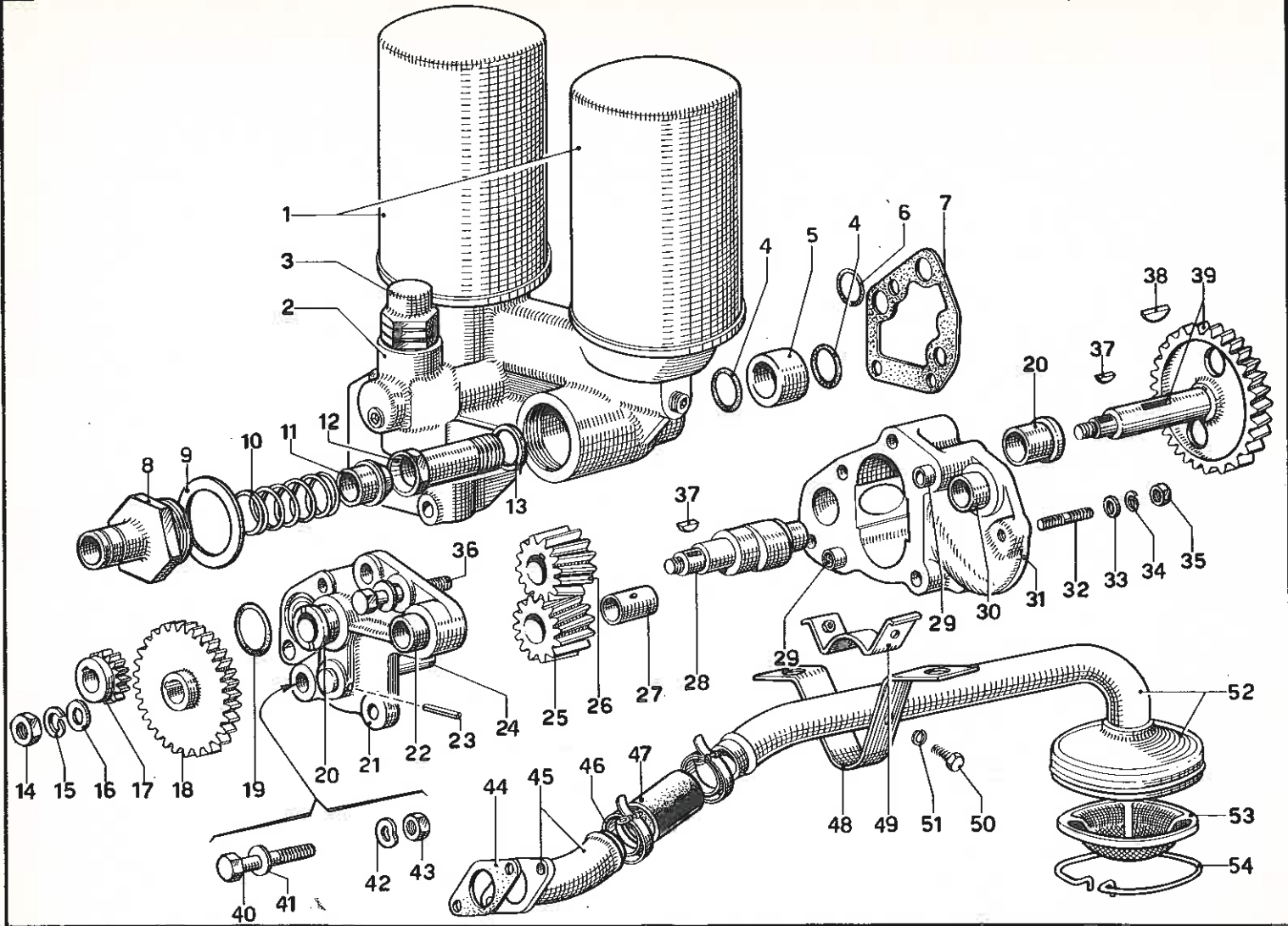
TAV. 12 - DISTRIBUZIONE - ACCESSORI



TAV. 13 - POMPA PER GUIDA IDRAULICA E COMANDI

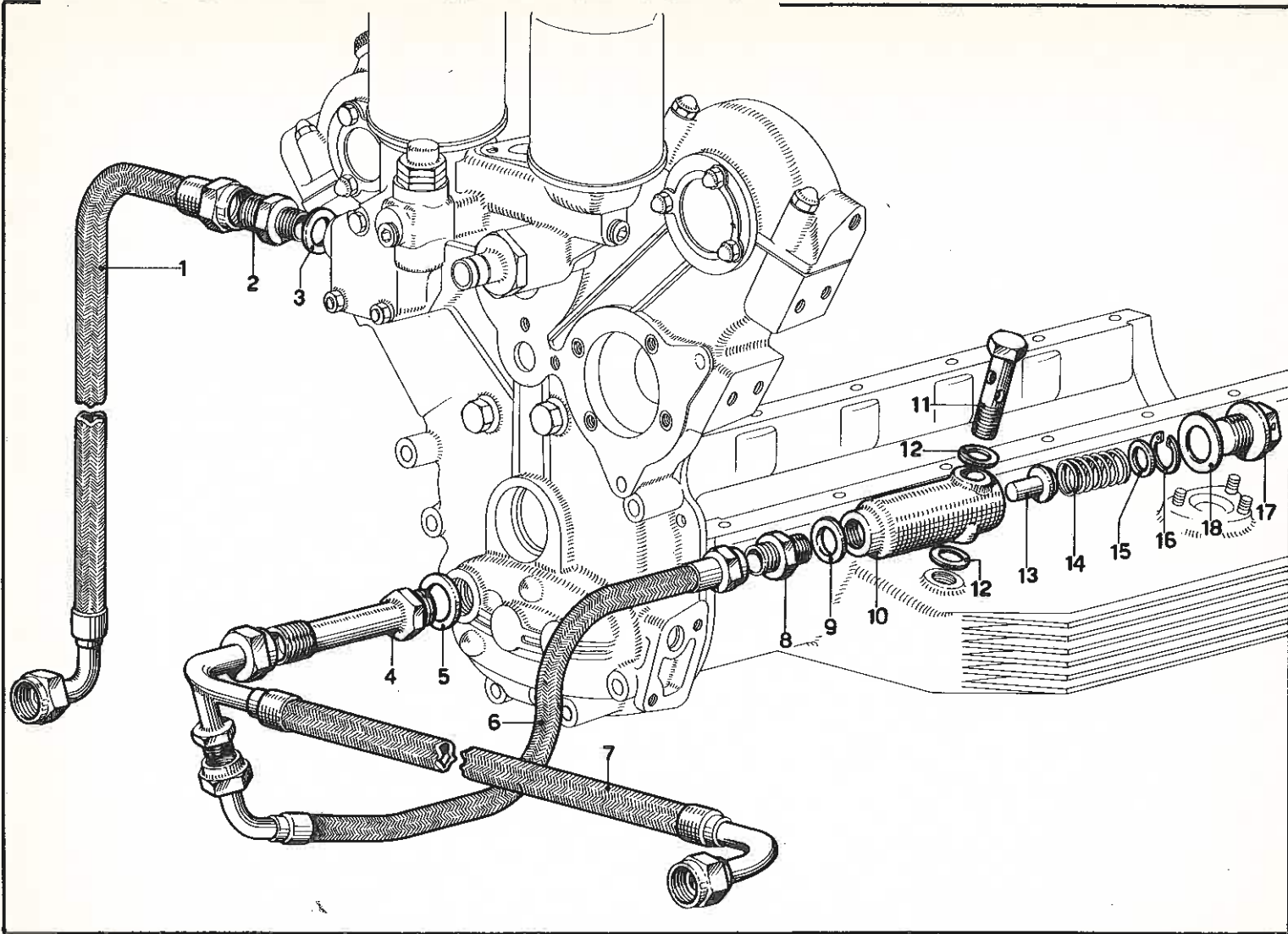


TAV. 14 - POMPA OLIO E FILTRI

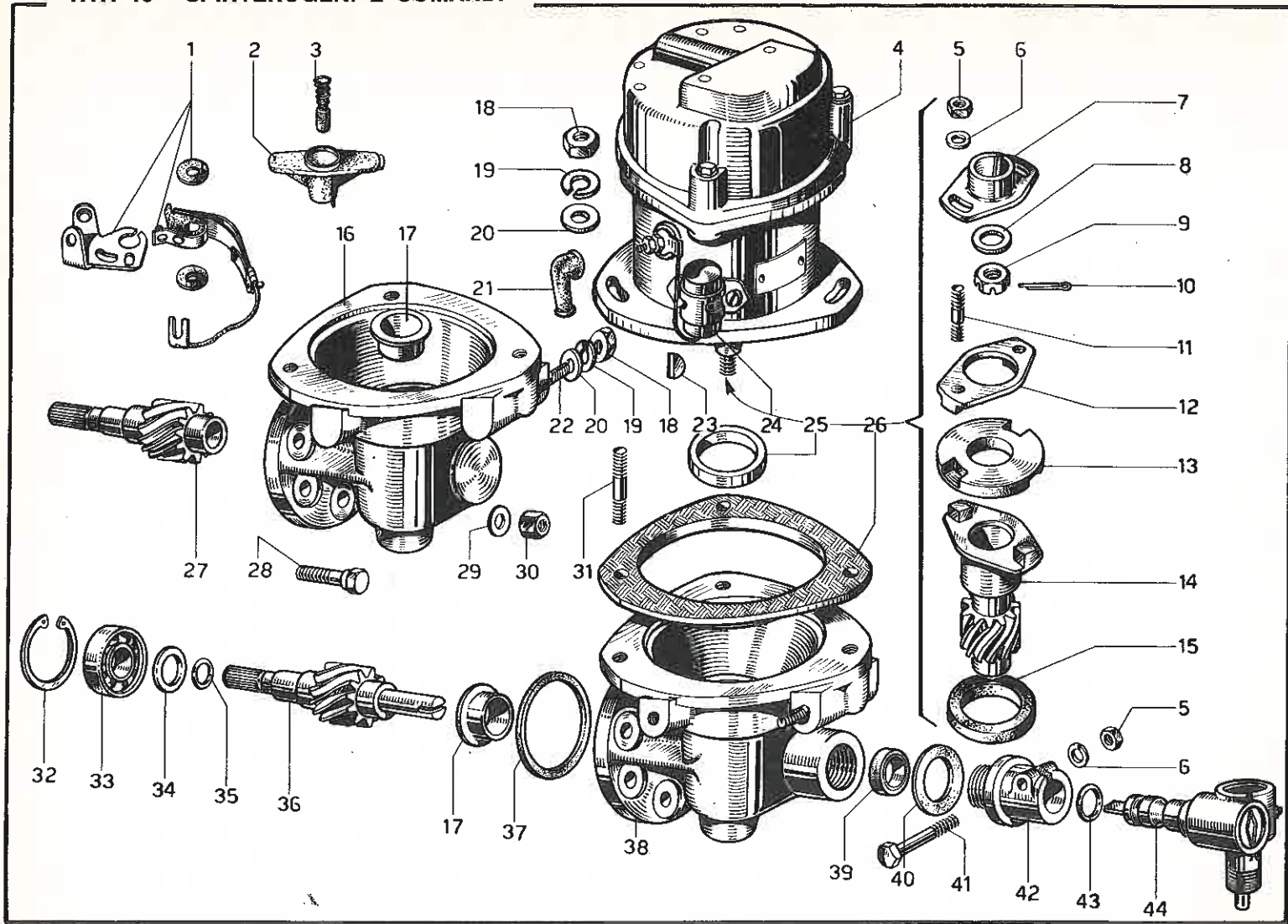




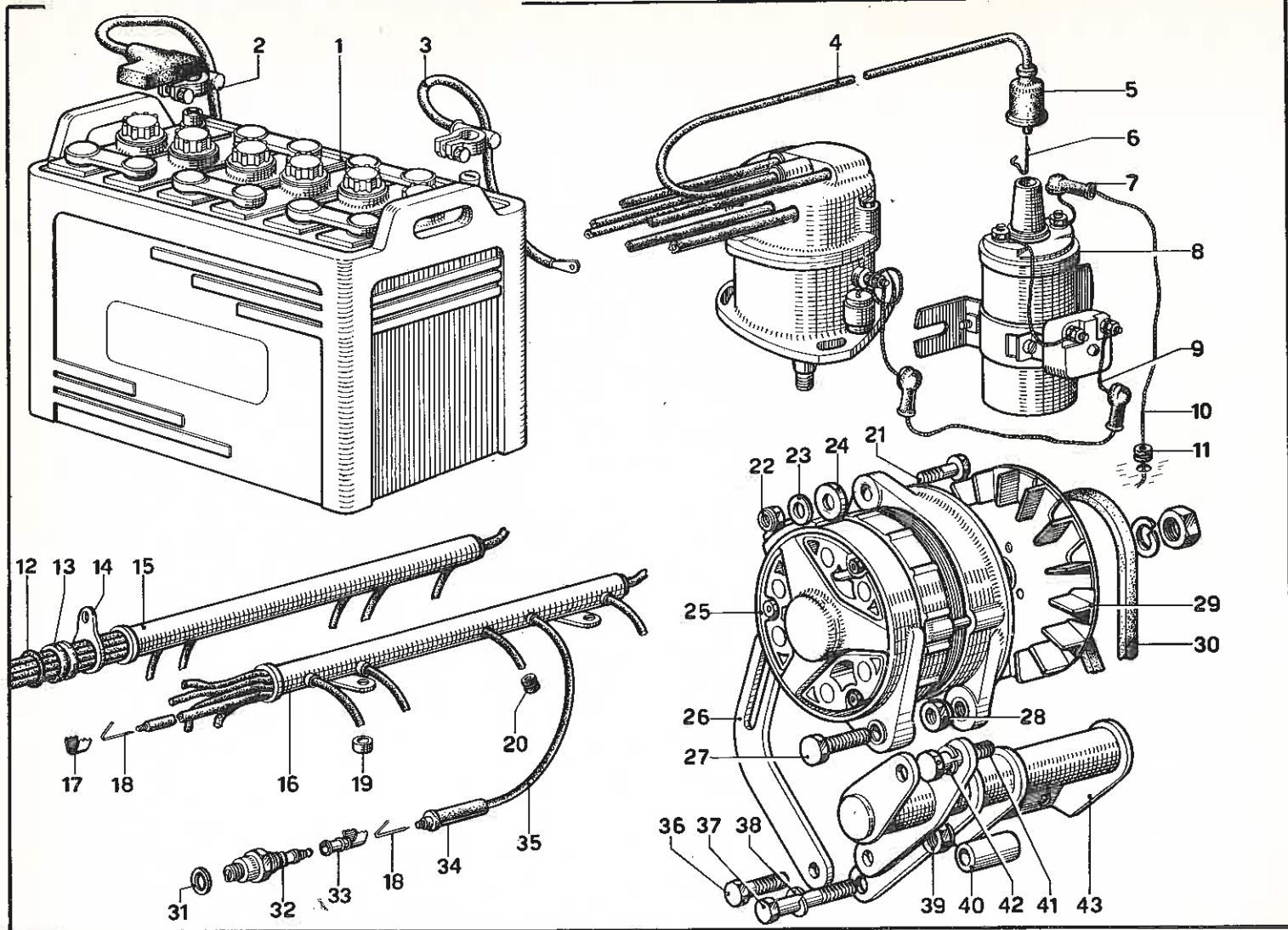
TAV. 15 - VALVOLA LIMITATRICE MASSIMA PRESSIONE OLIO



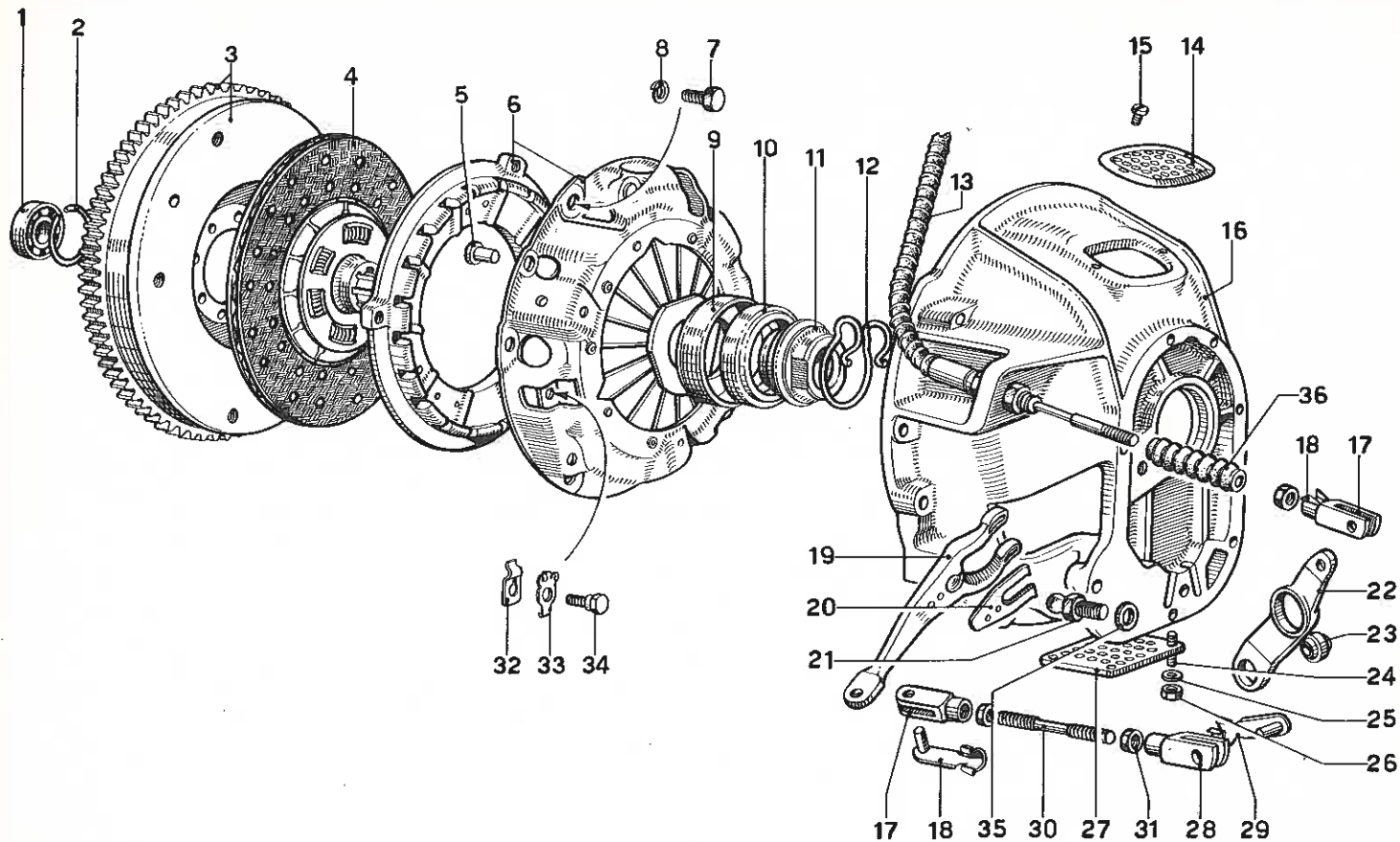
TAV. 16 - SPINTEROGENI E COMANDI



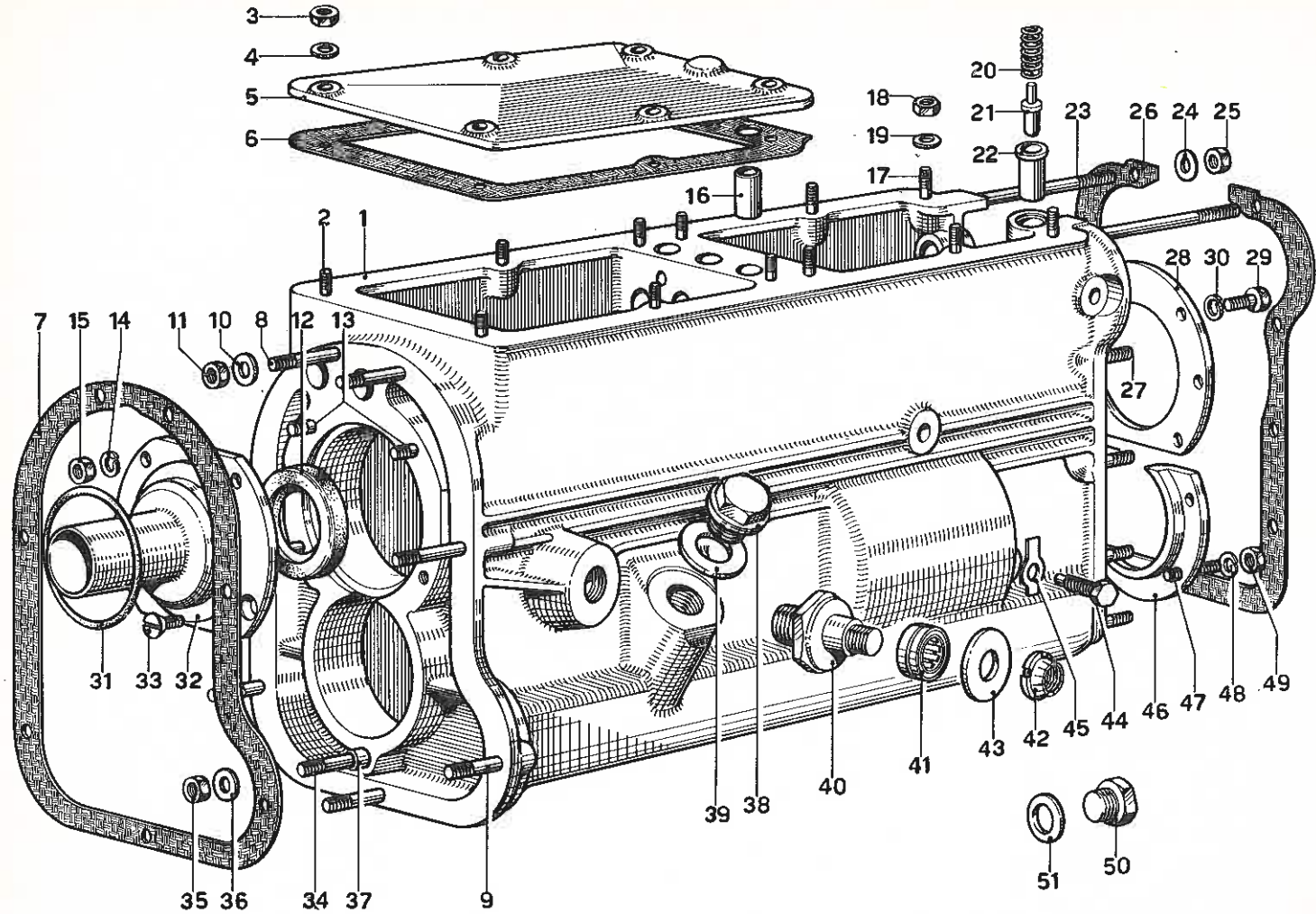
TAV. 17 - GENERATORE E BATTERIA



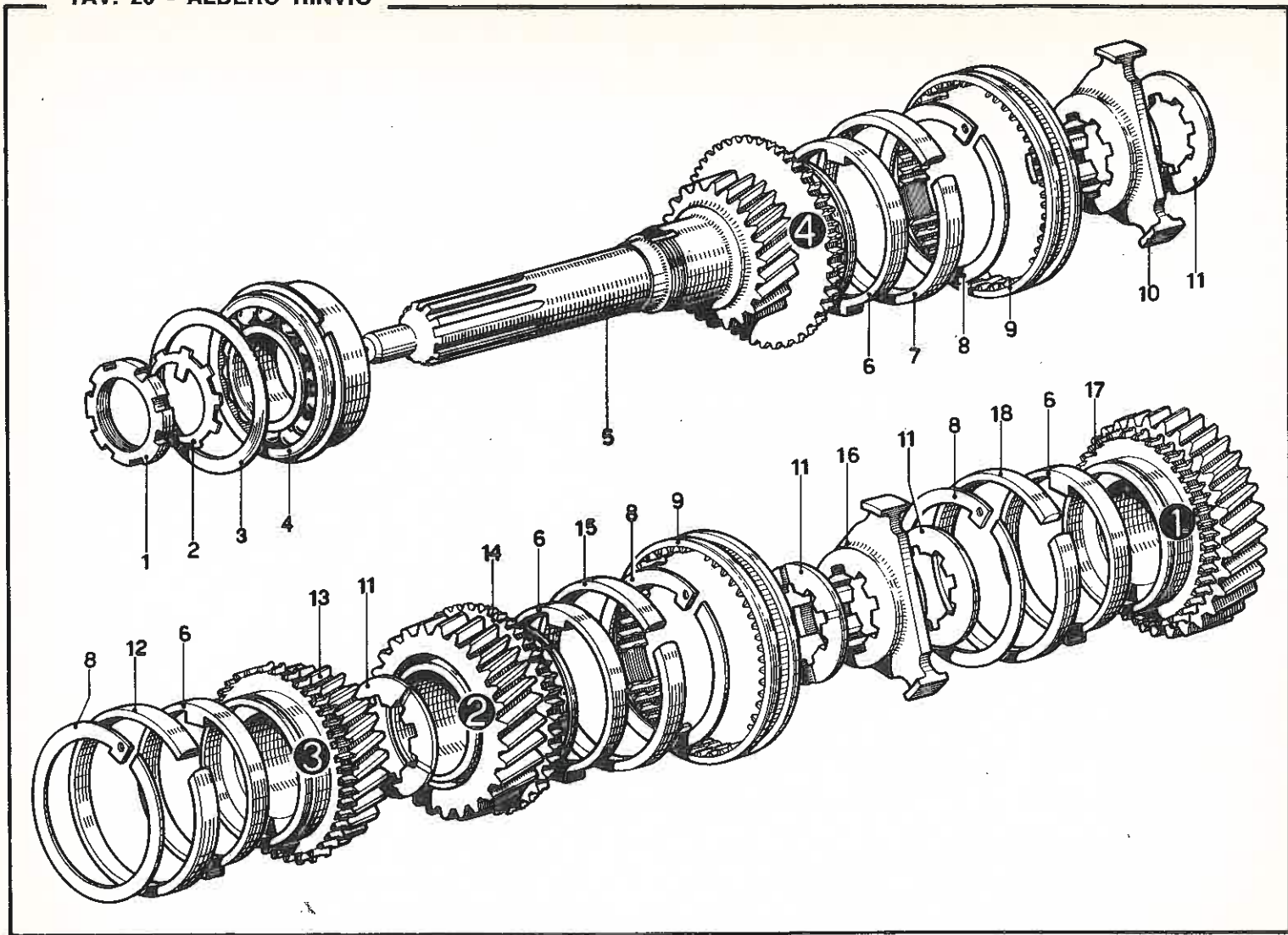
TAV. 18. - FRIZIONE E COMANDI



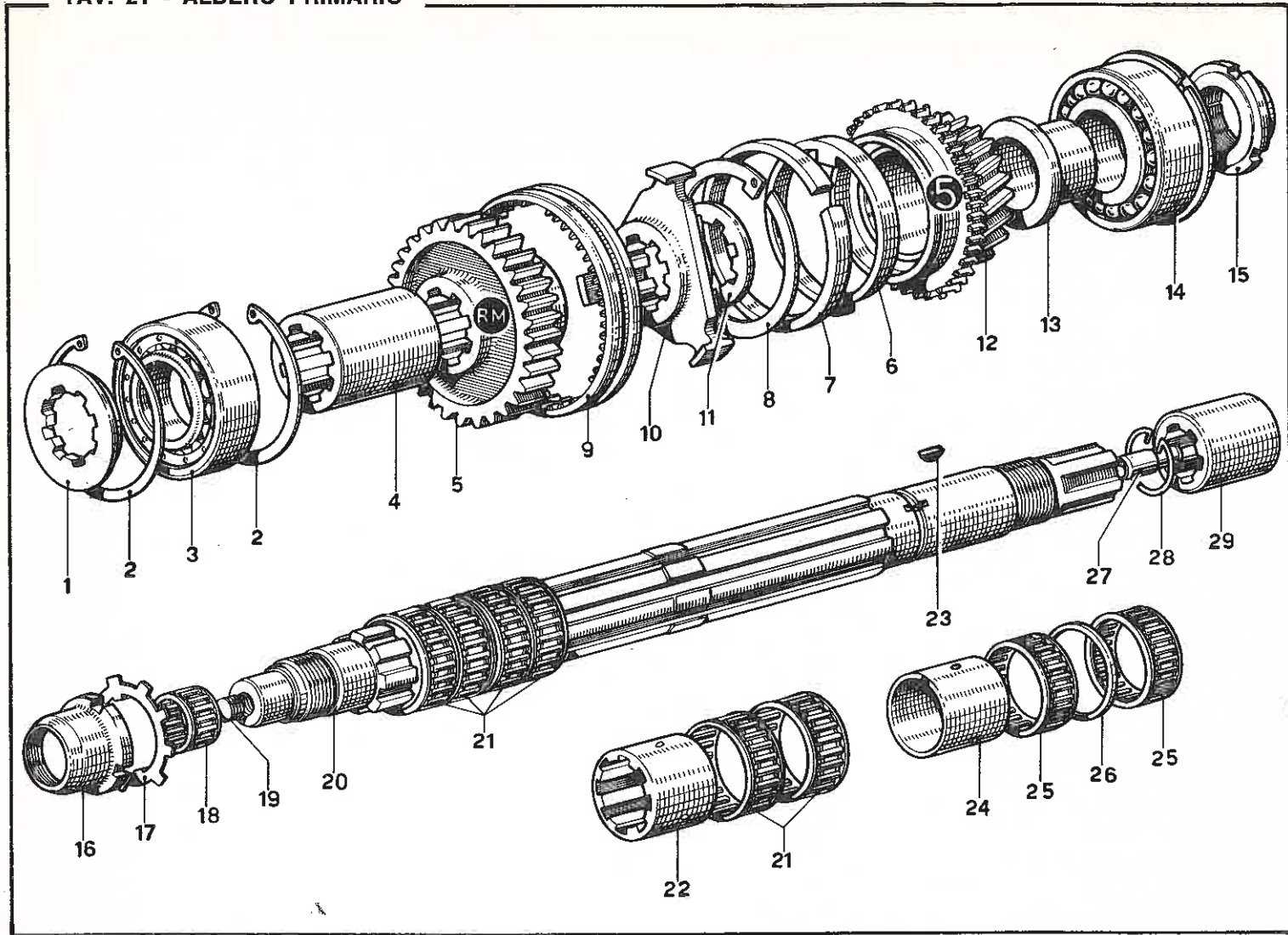
TAV. 19 - SCATOLA CAMBIO



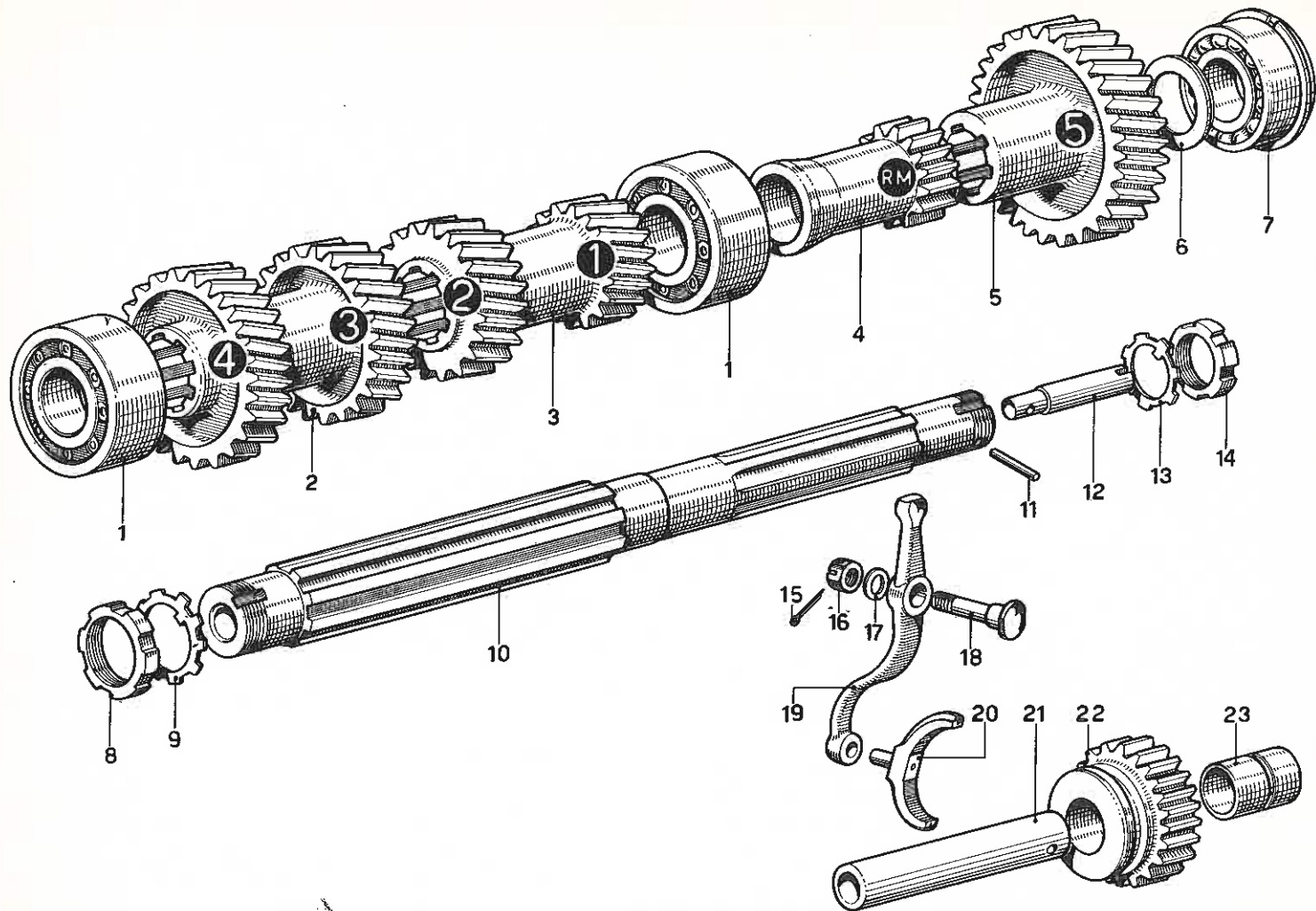
TAV. 20 - ALBERO RINVIO



TAV. 21 - ALBERO PRIMARIO

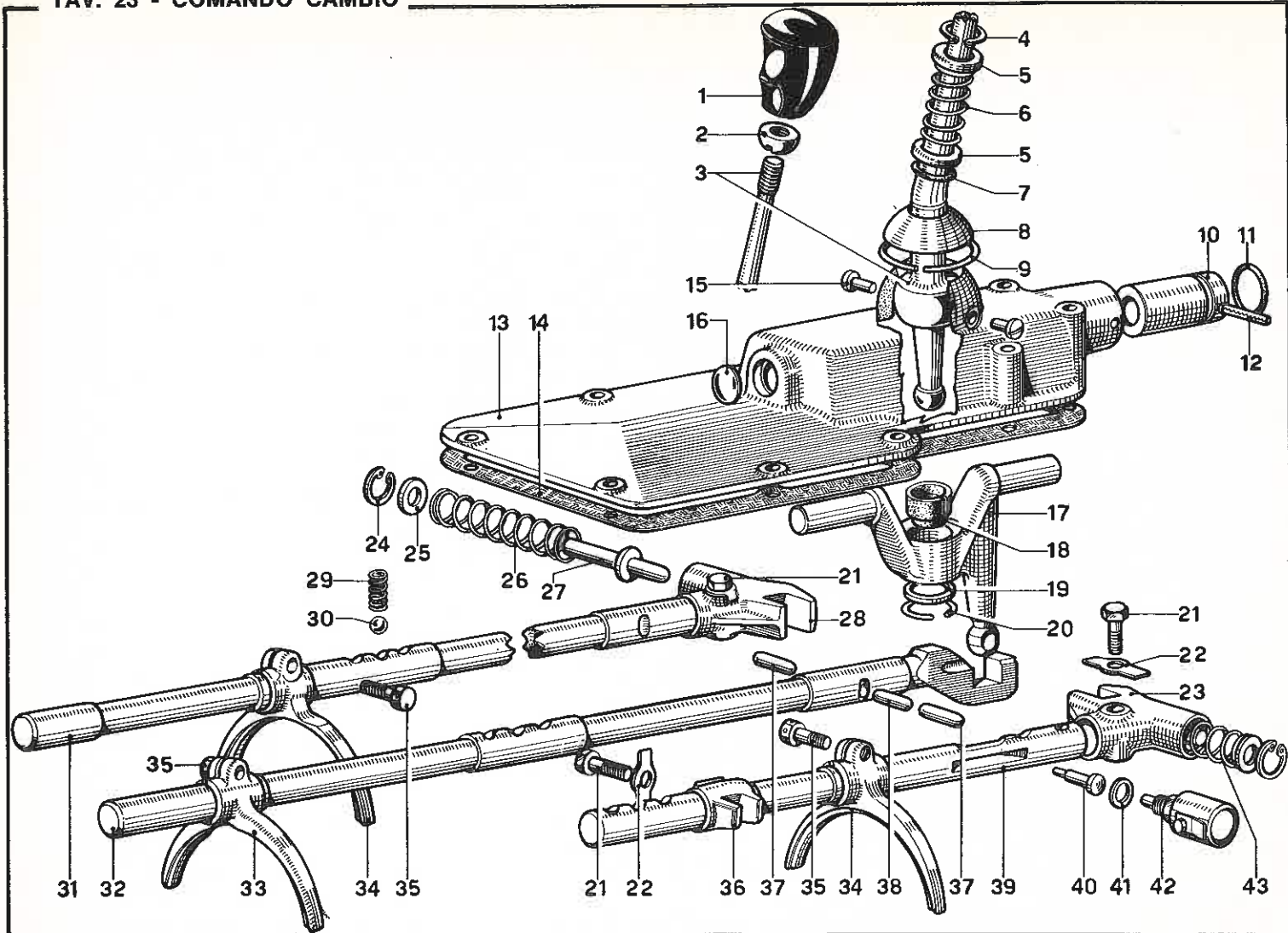


TAV. 22 - ALBERO SECONDARIO

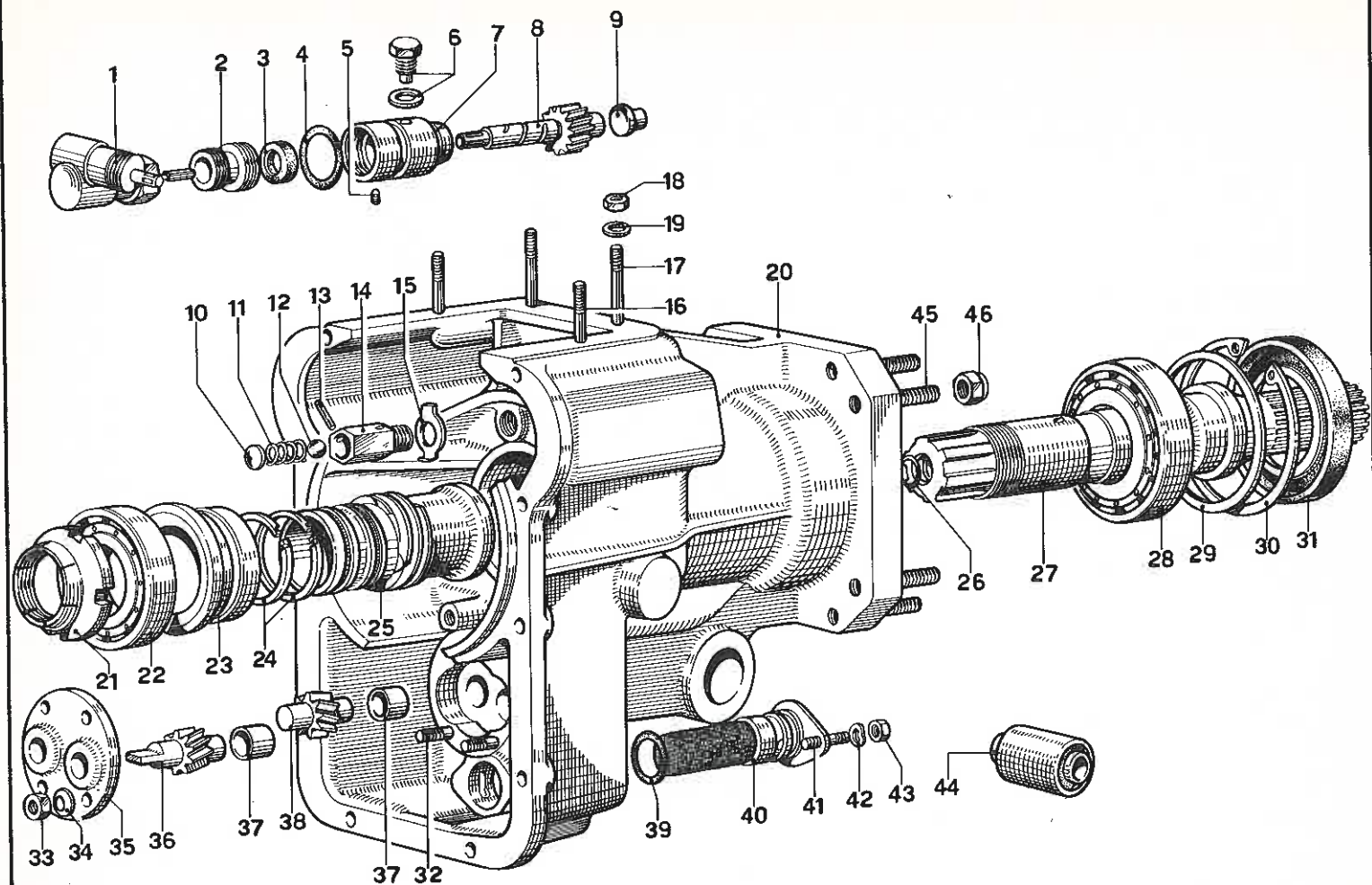




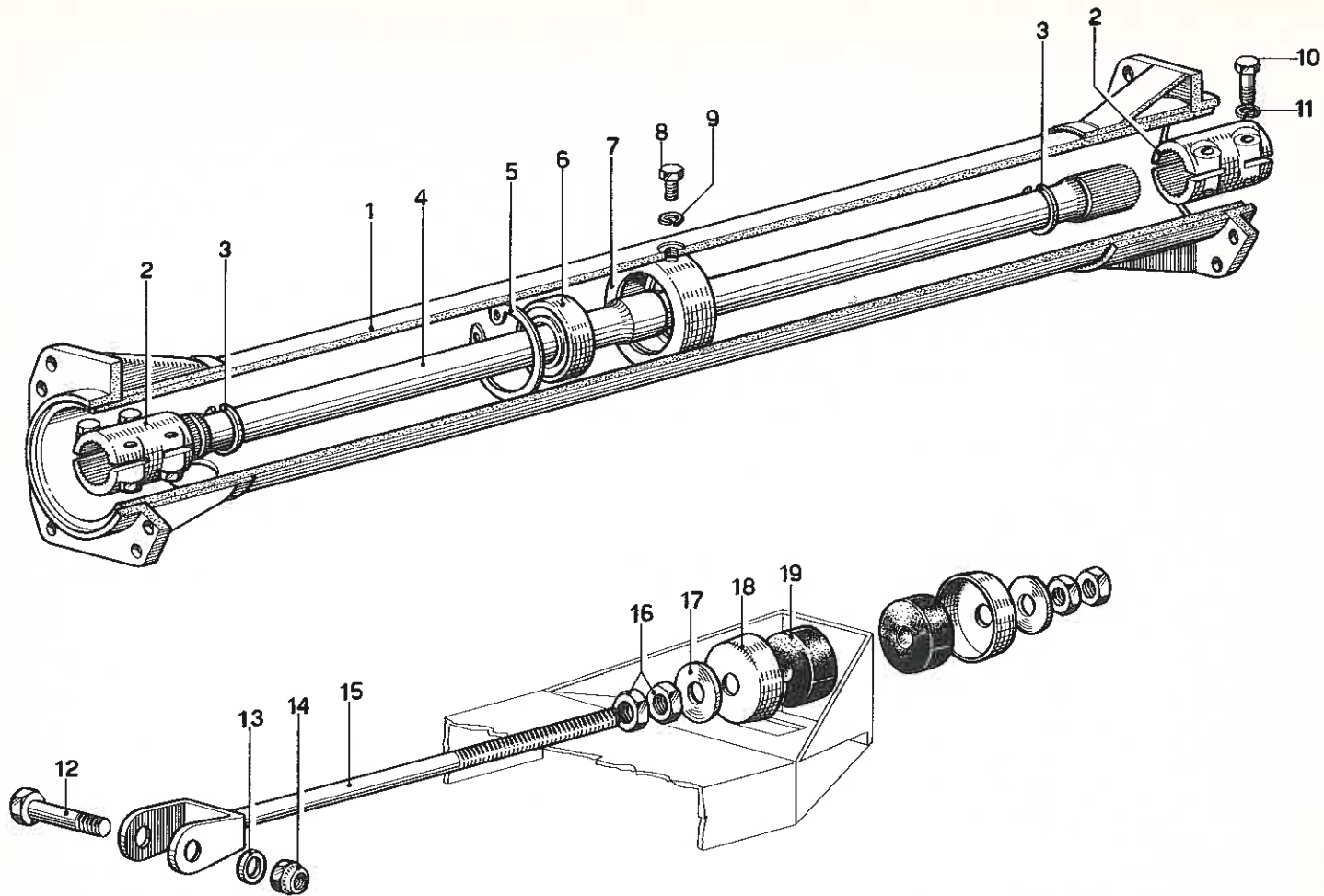
TAV. 23 - COMANDO CAMBIO



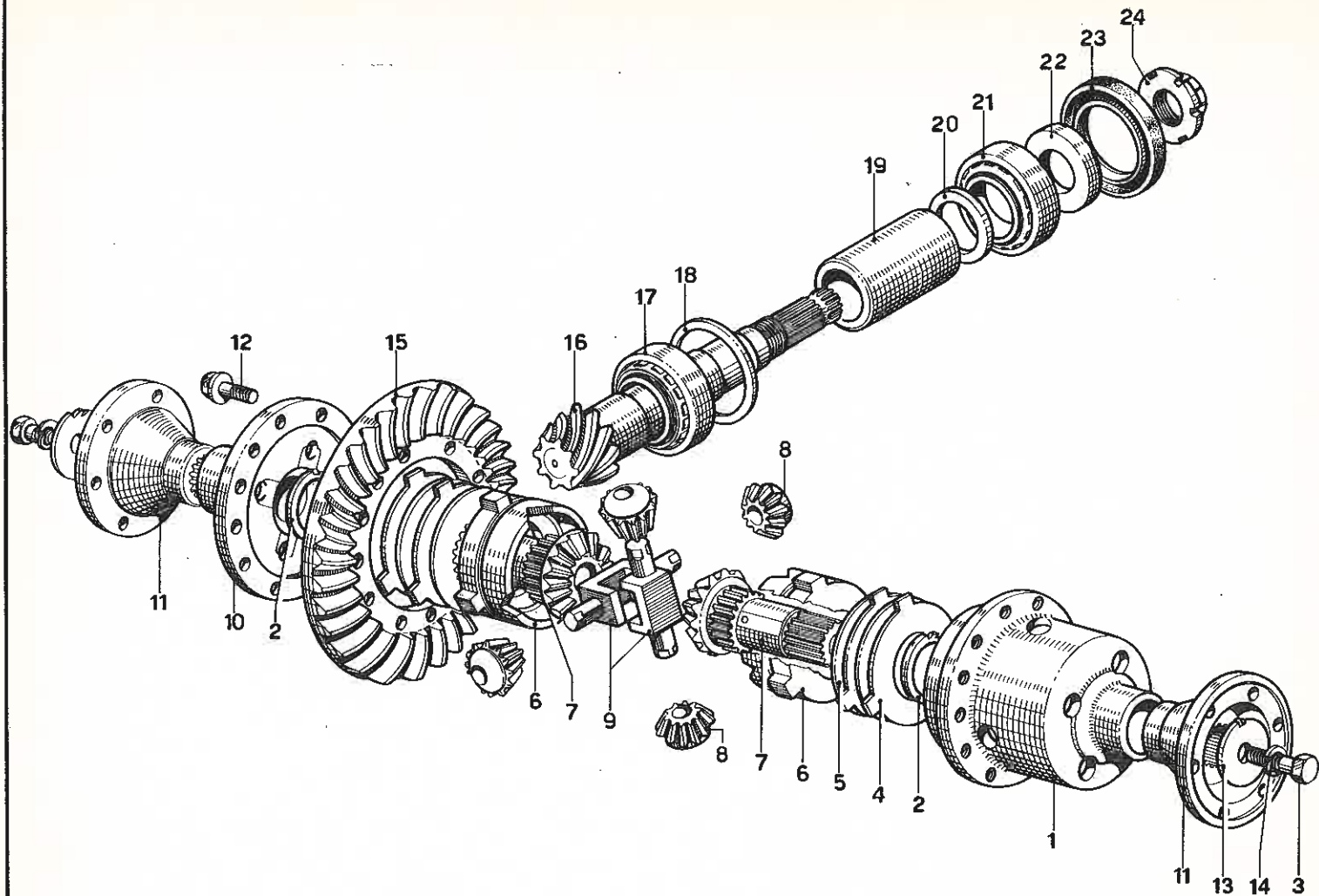
TAV. 24 - SCATOLA POSTERIORE CAMBIO



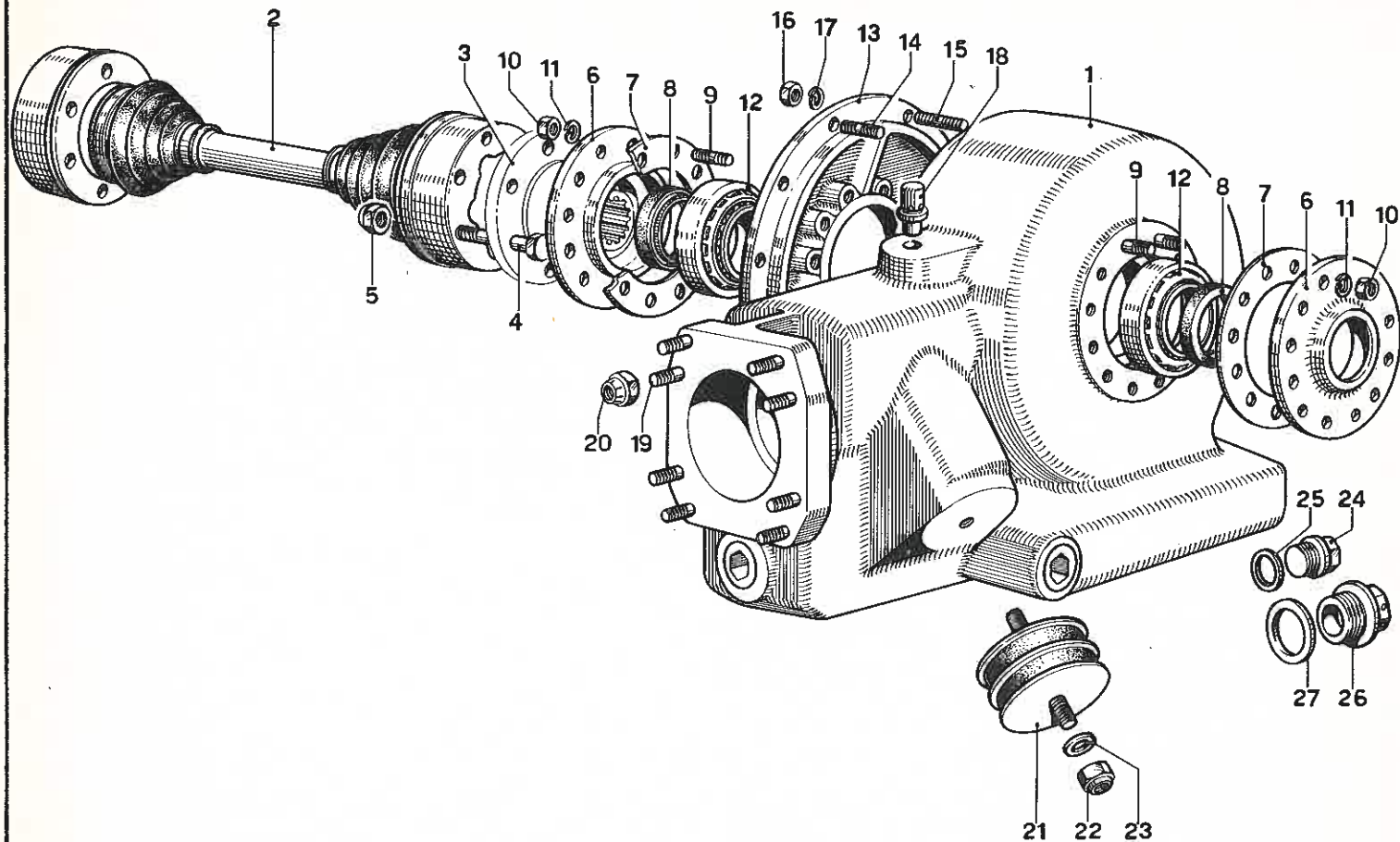
TAV. 25 - ALBERO DI TRASMISSIONE



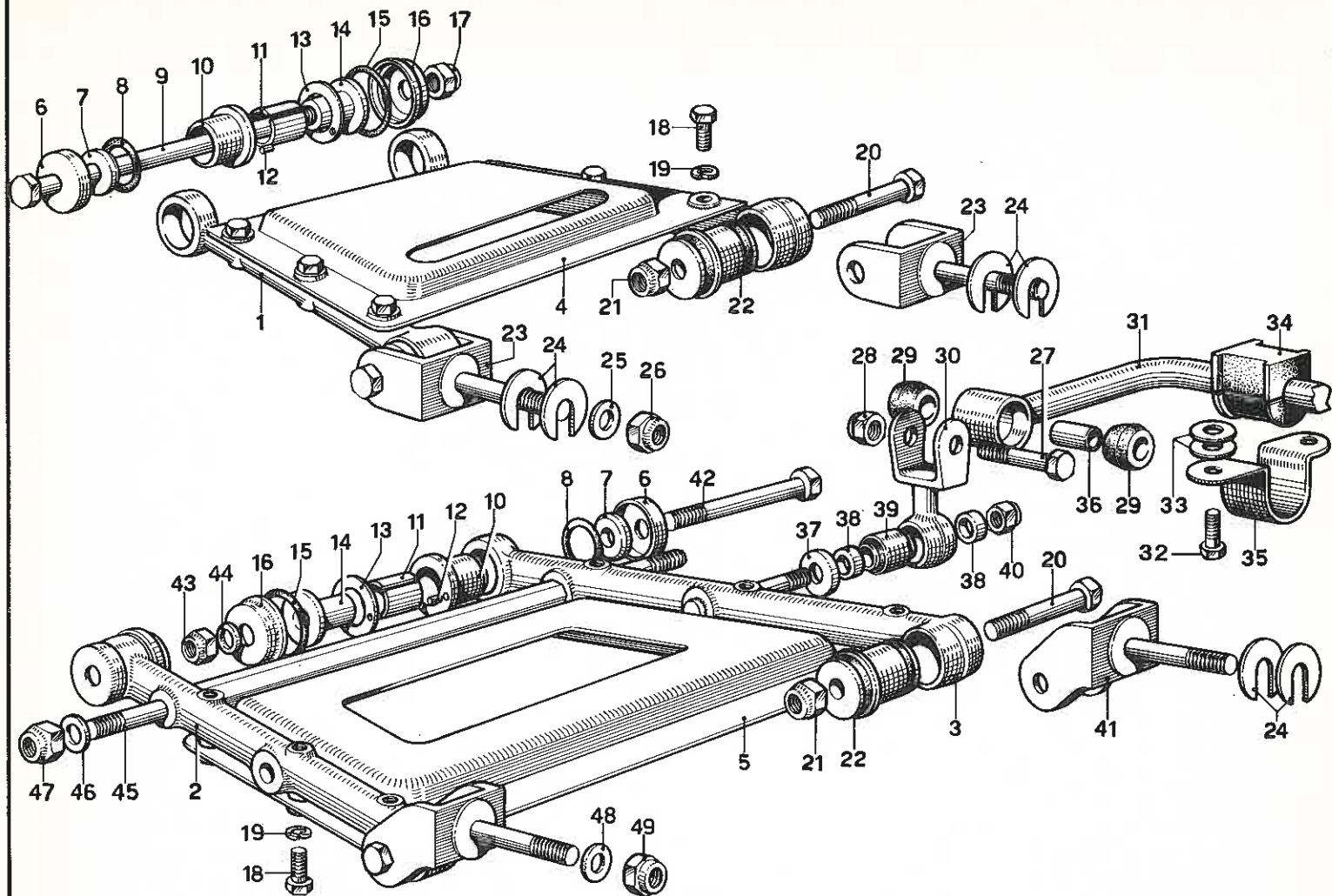
TAV. 26 - DIFFERENZIALE - PIGNONE E CORONA



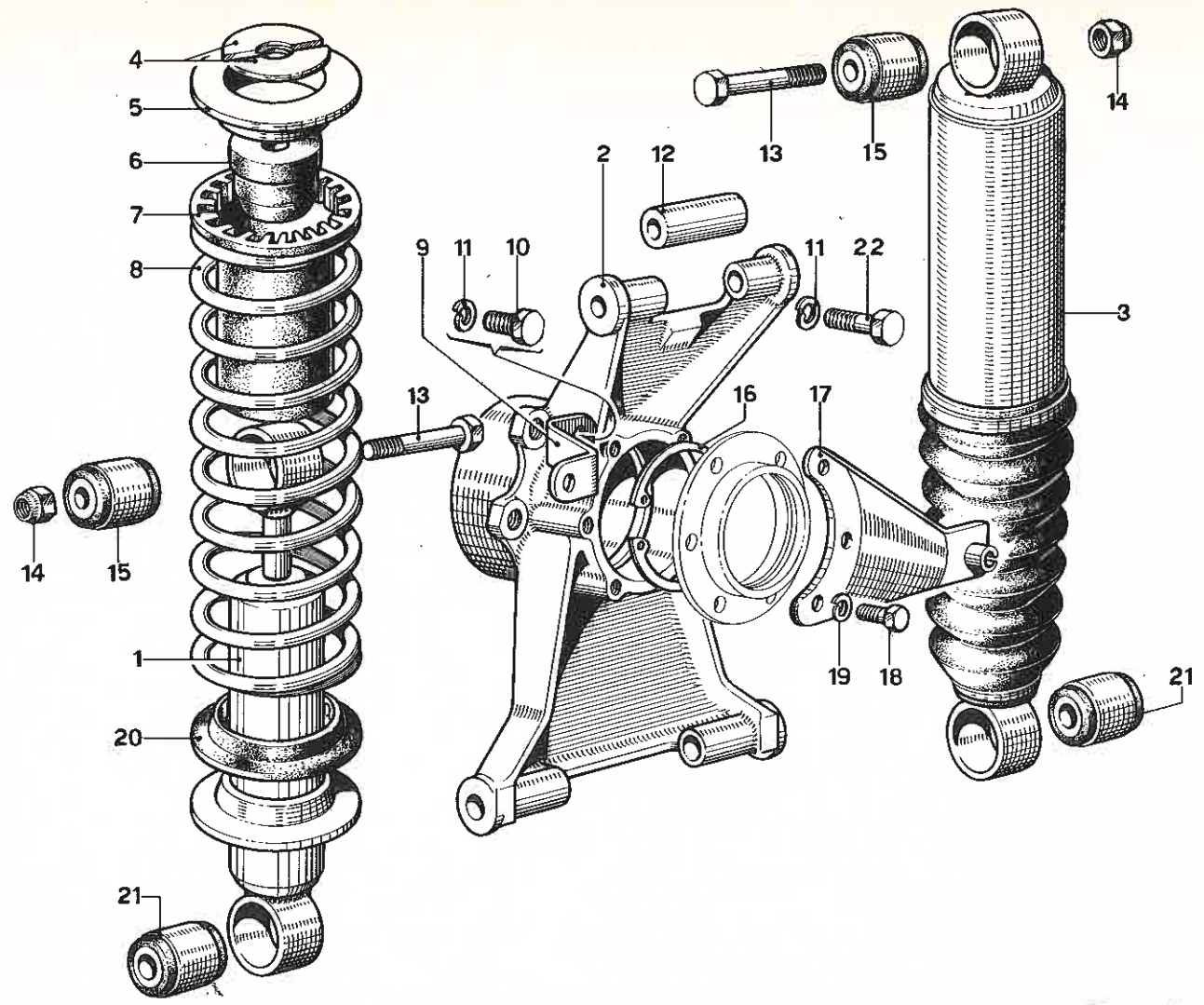
TAV. 27 - PONTE POSTERIORE E SEMIASSE



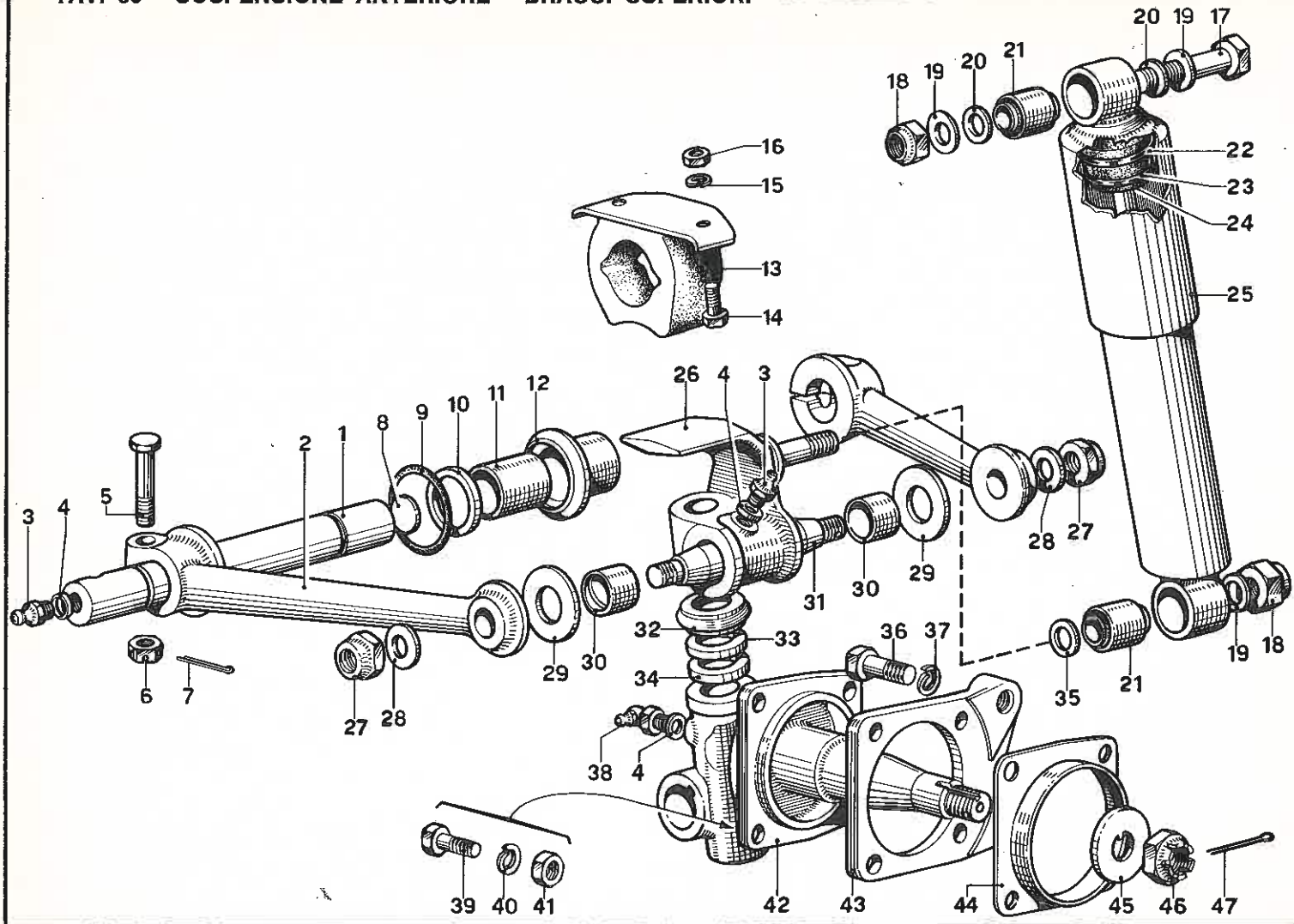
TAV. 28 - SOSPENSIONE POSTERIORE



TAV. 29 - SOSPENSIONE POSTERIORE - AMMORTIZZATORE E LIVELLATORE



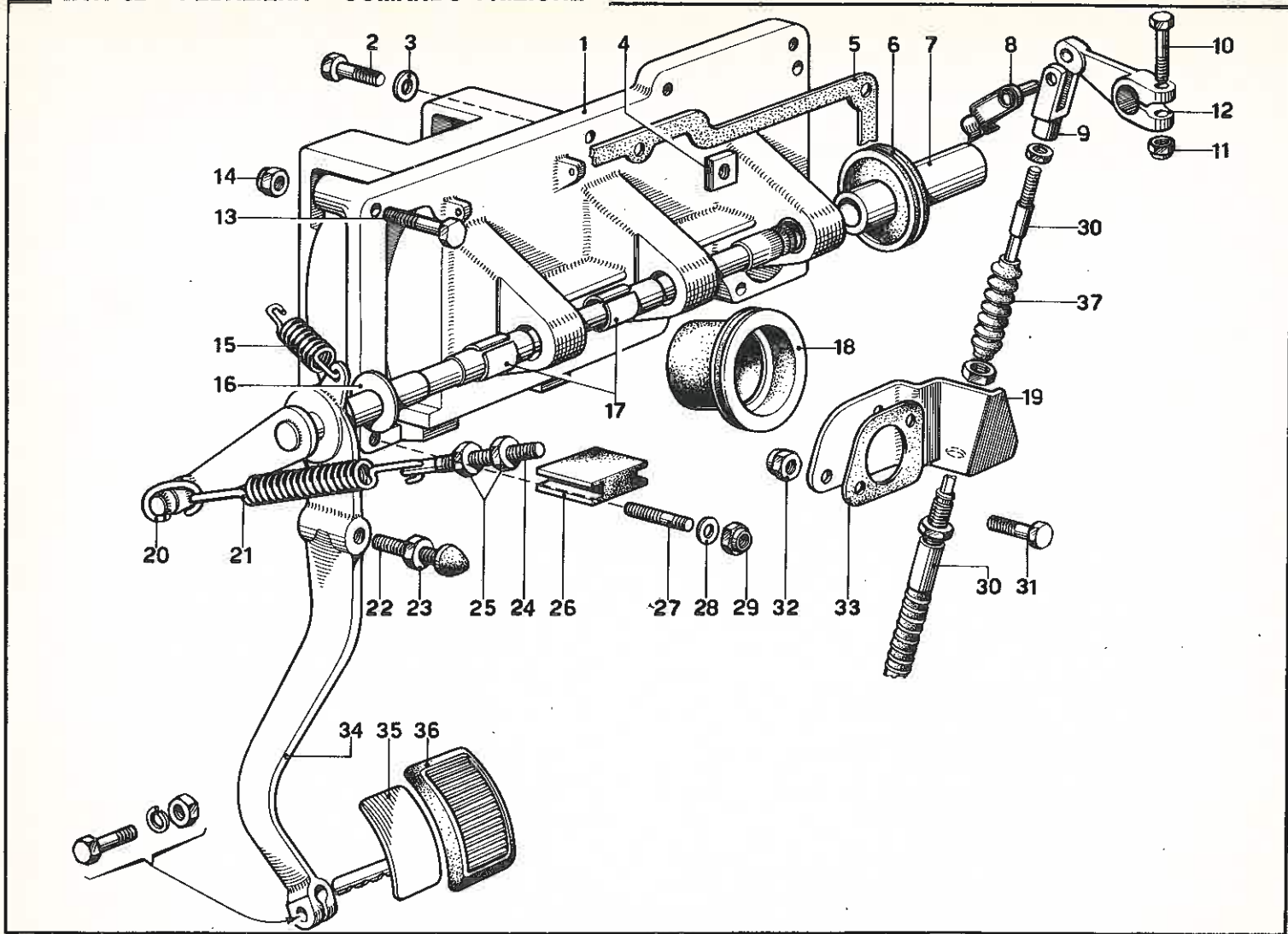
TAV. 30 - SOSPENSIONE ANTERIORE - BRACCI SUPERIORI



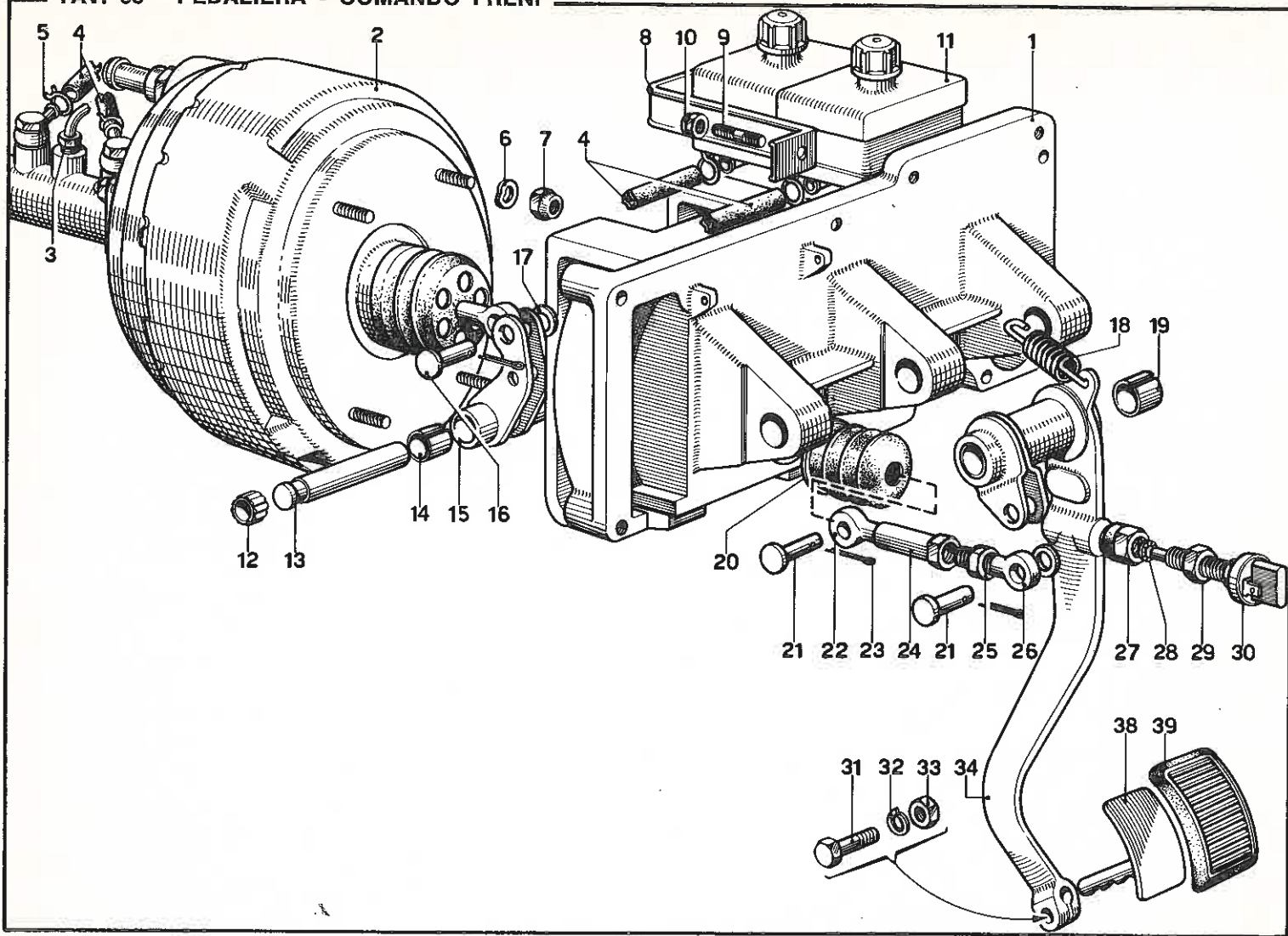




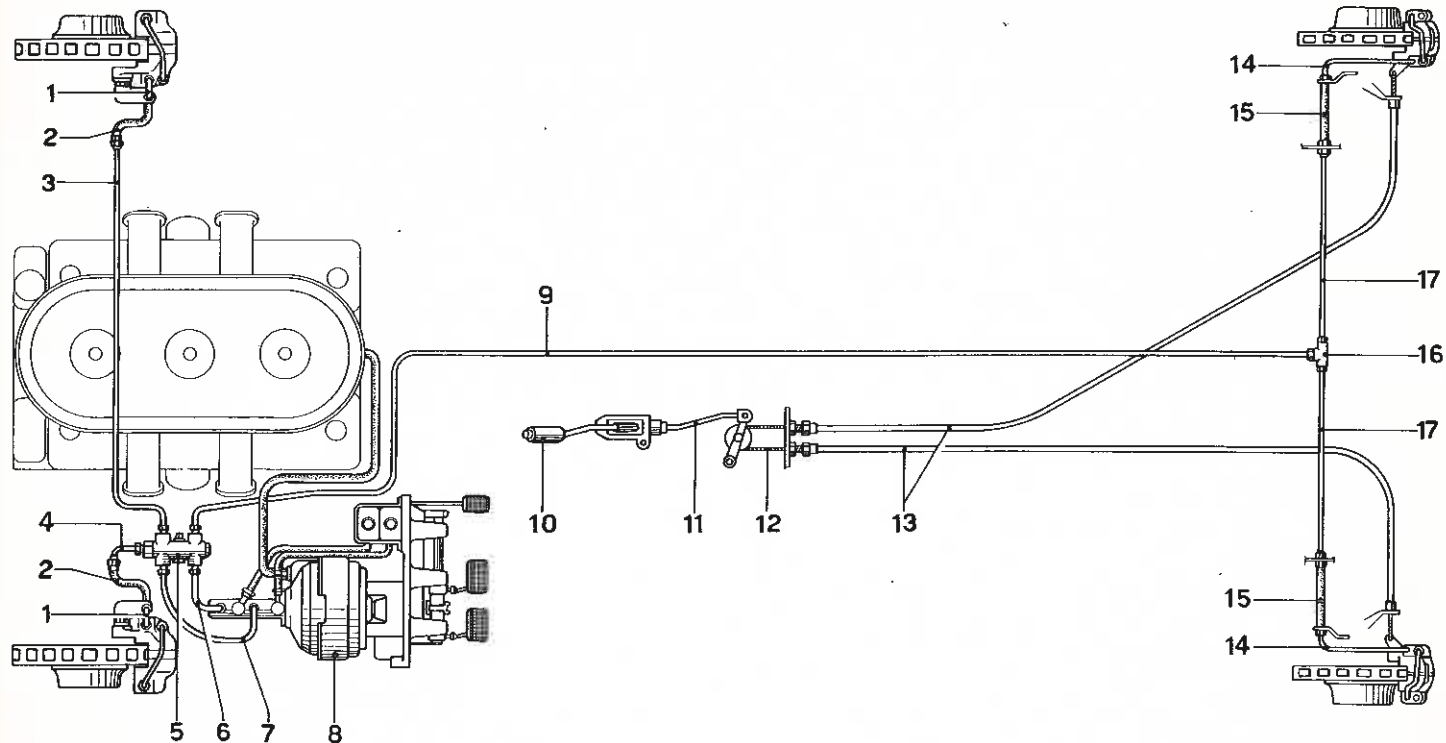
TAV. 32 - PEDALIERA - COMANDO FRIZIONE



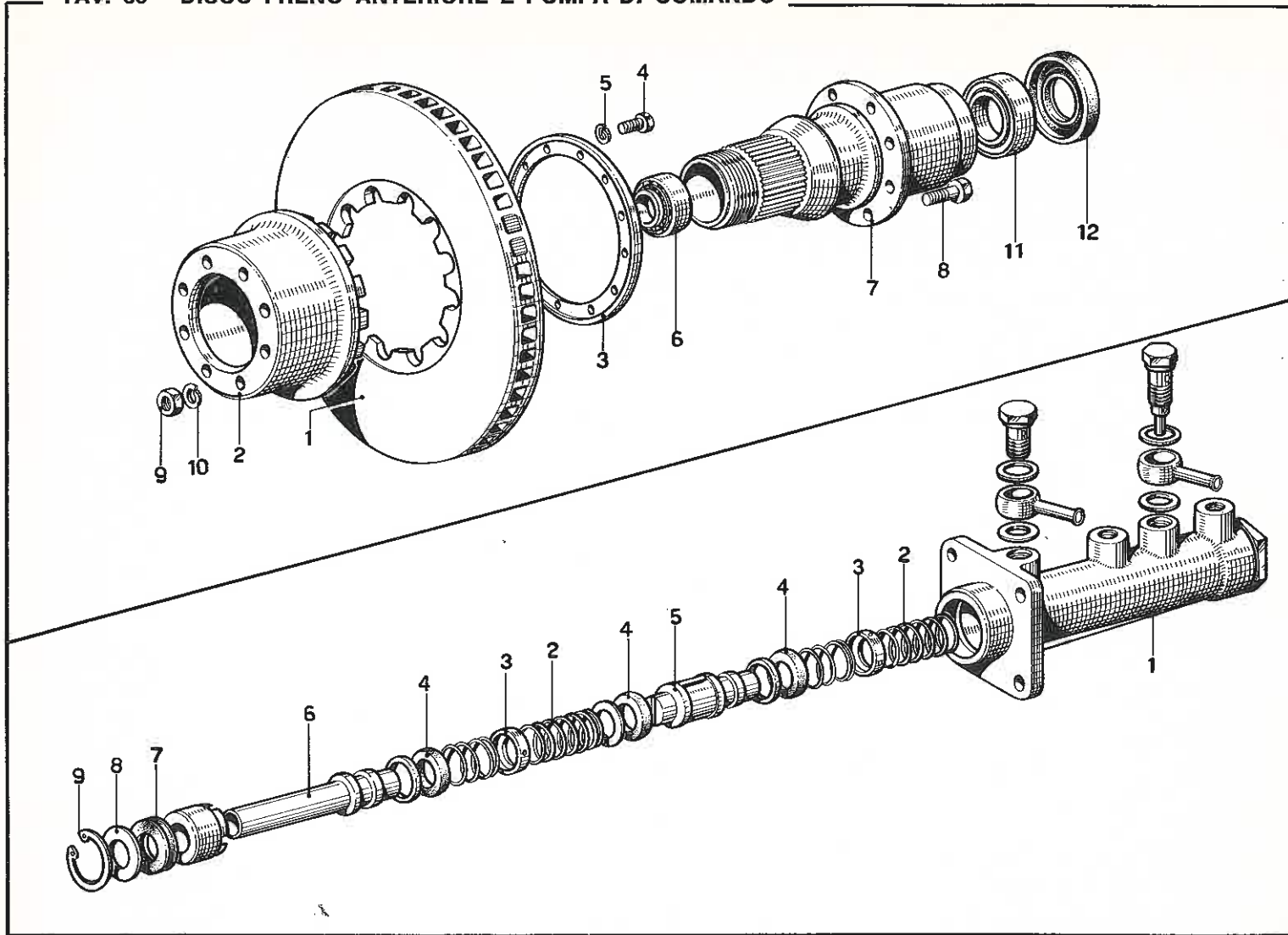
TAV. 33 - PEDALIERA - COMANDO FRENI



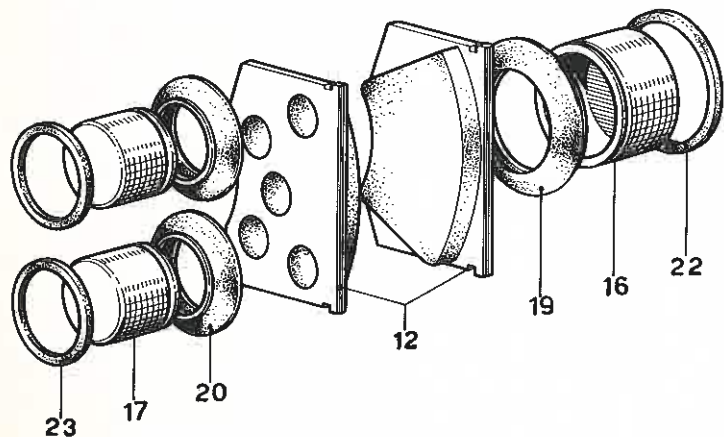
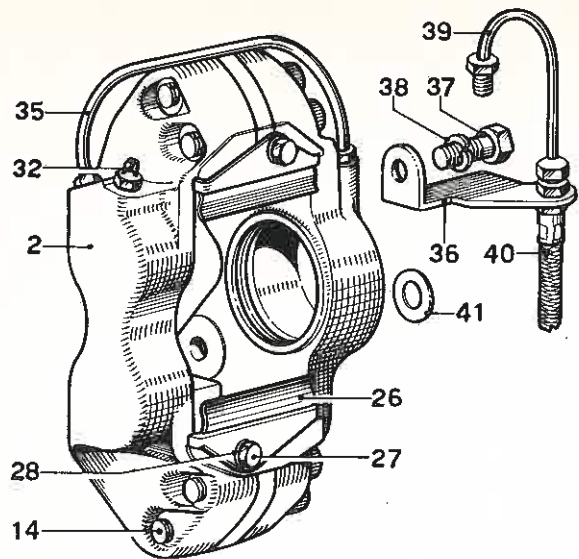
TAV. 34 - SCHEMA IMPIANTO FRENI



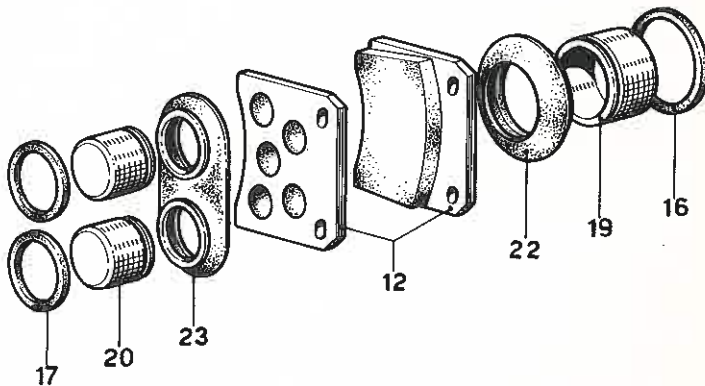
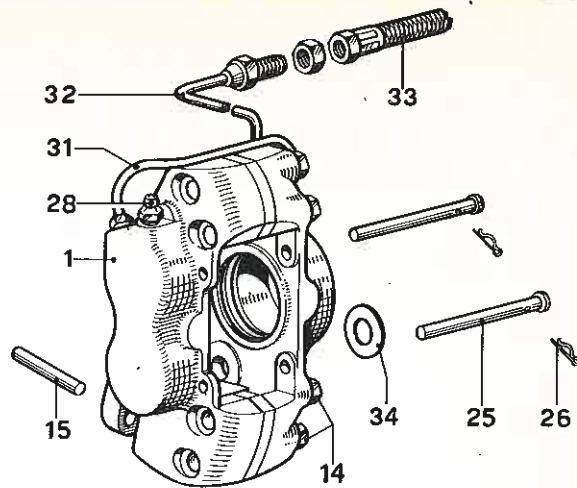
TAV. 35 - DISCO FRENO ANTERIORE E POMPA DI COMANDO



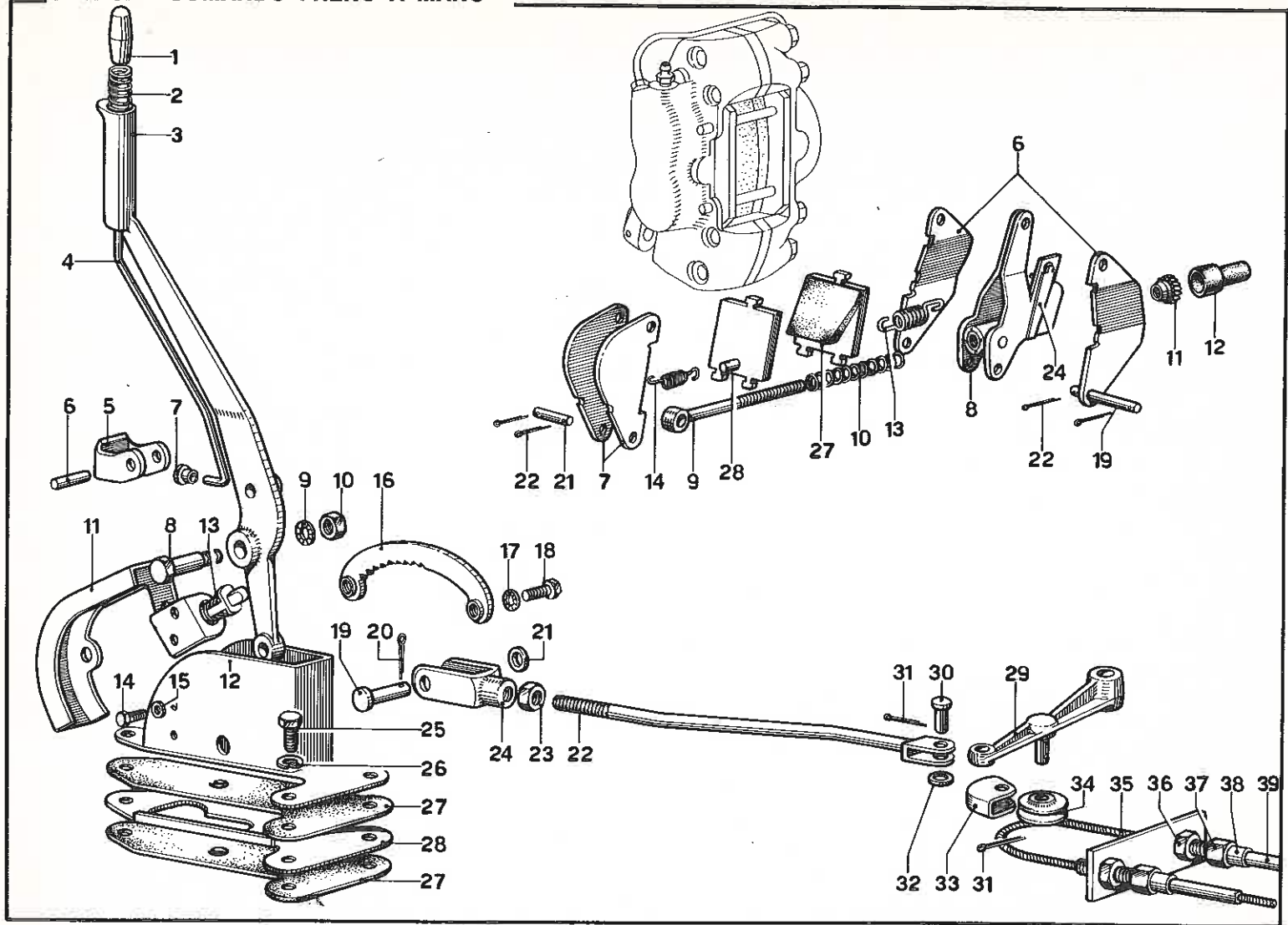
TAV. 36 - CALIPER PER FRENI ANTERIORI



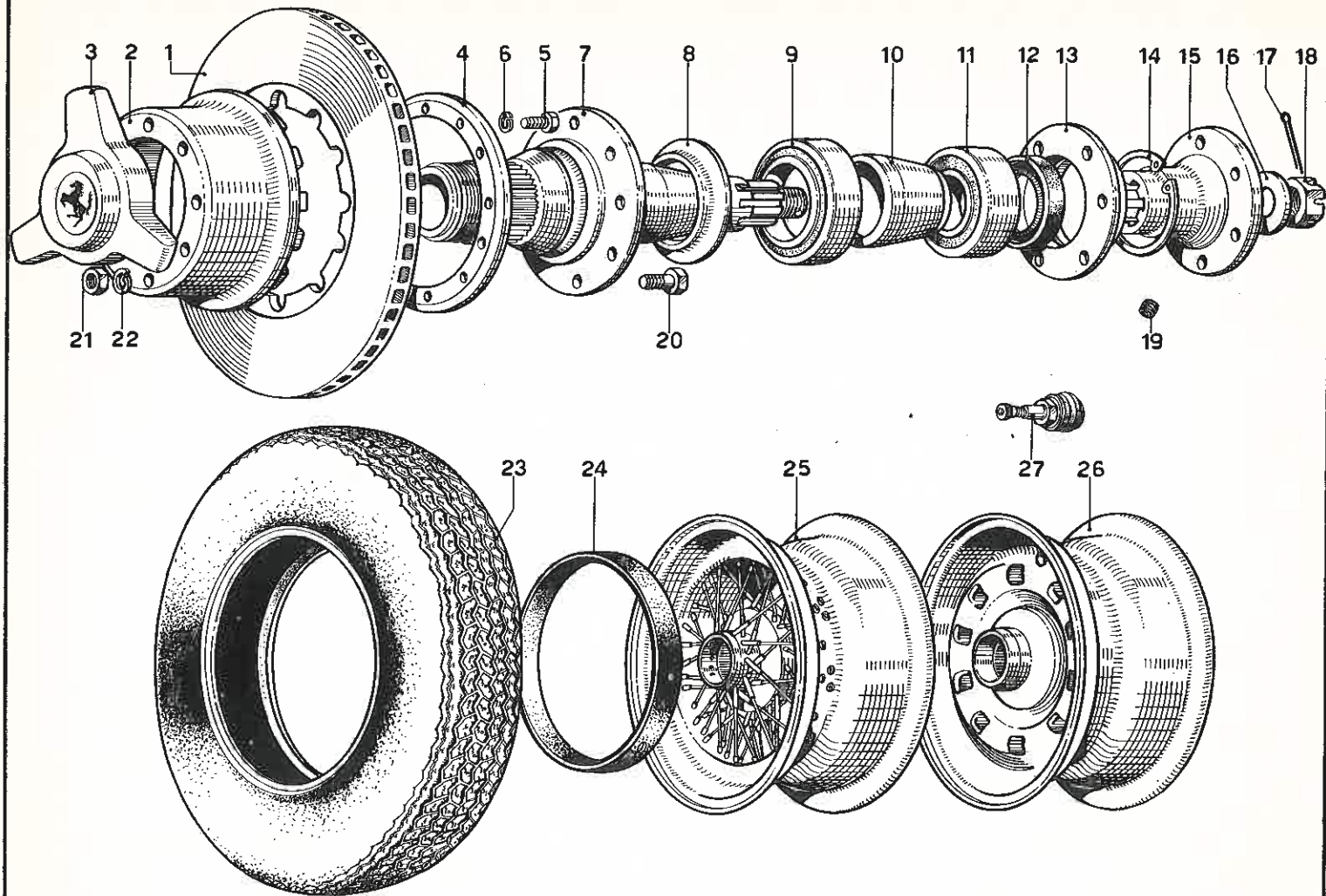
TAV. 36 - CALIPER PER FRENI POSTERIORI



TAV. 37 - COMANDO FRENO A MANO

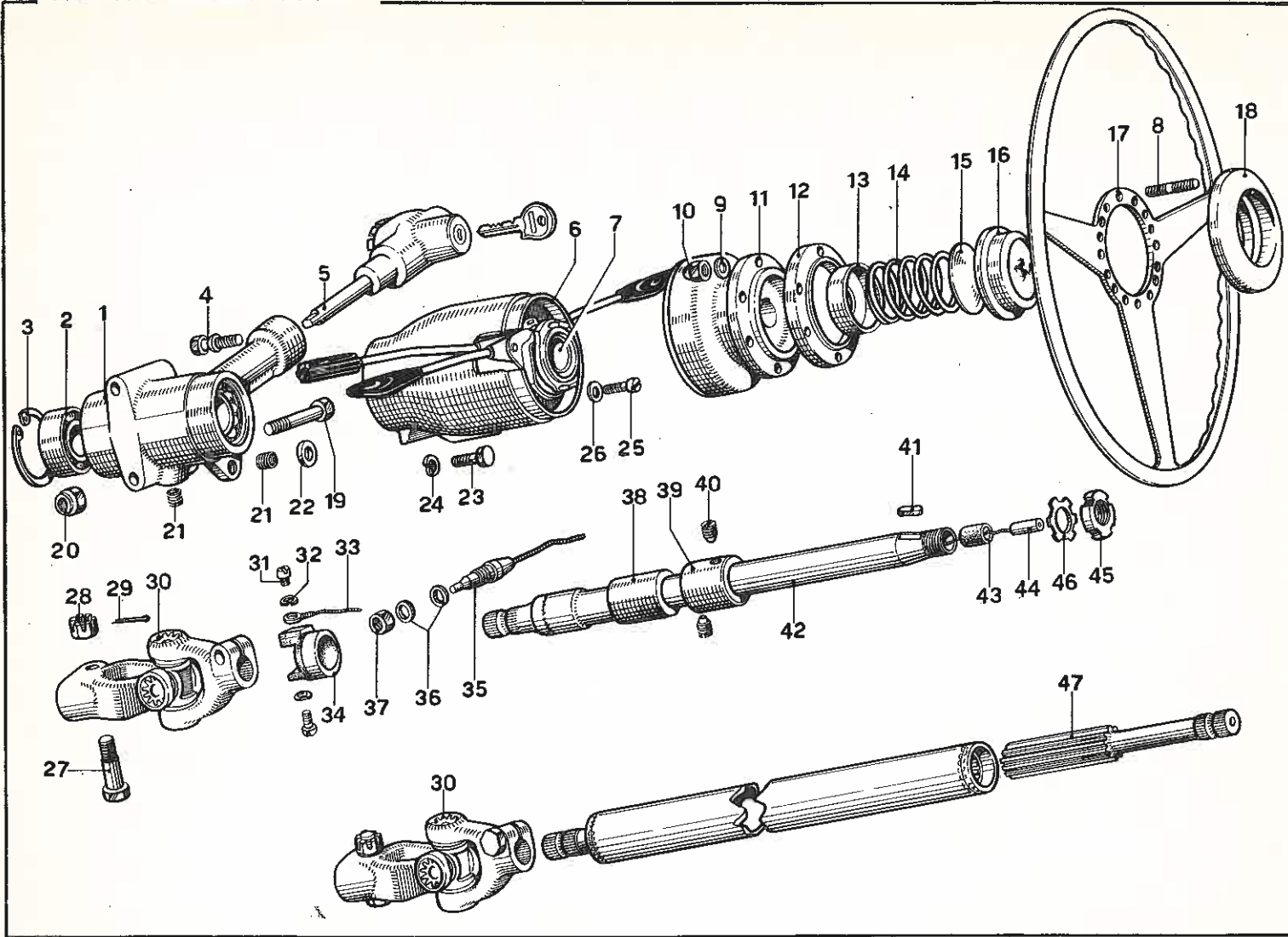


TAV. 38 - DISCO FRENO POSTERIORE E RUOTE

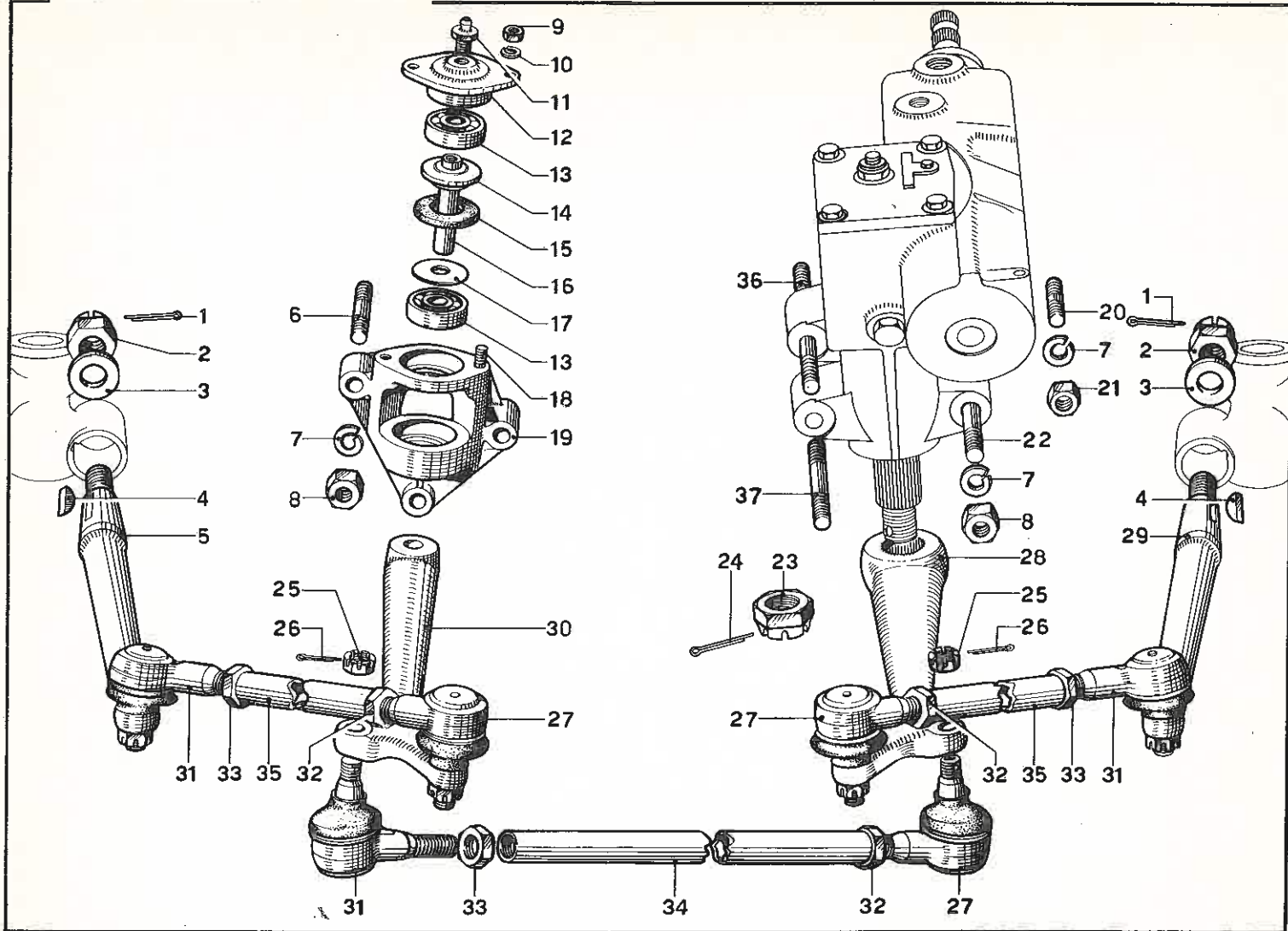




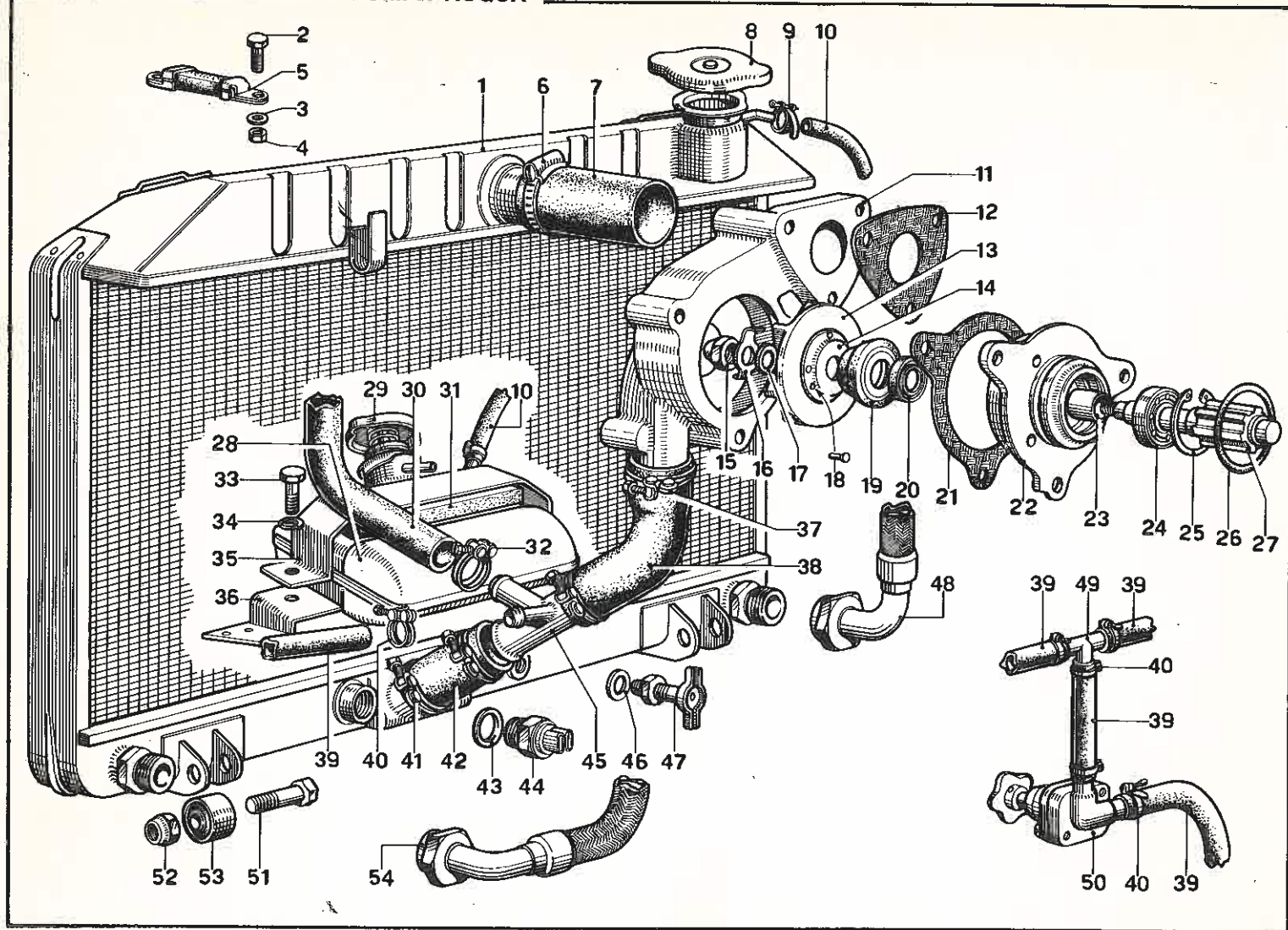
TAV. 39 - ALBERO GUIDA



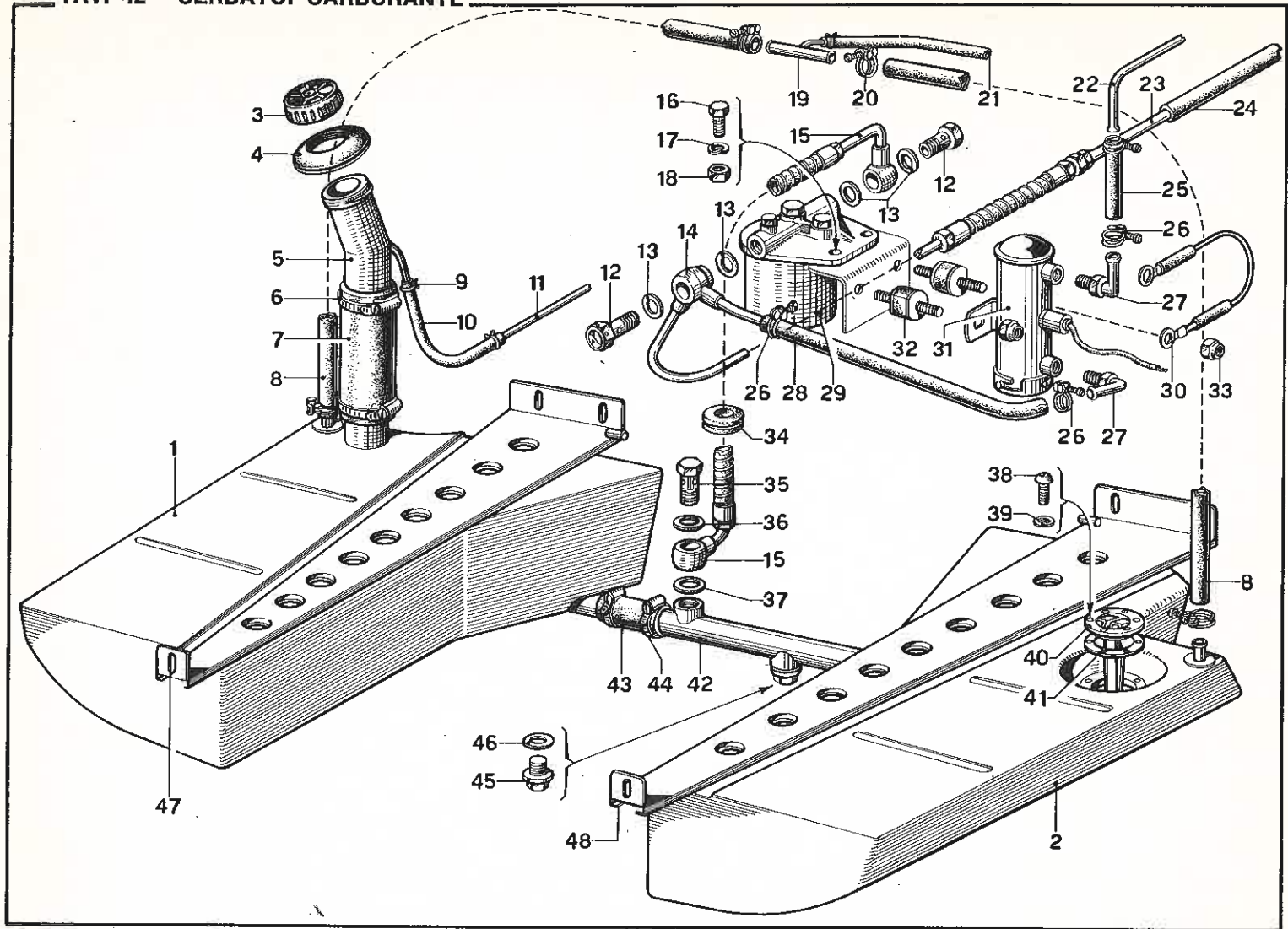
TAV. 40 - ORGANI DI STERZO

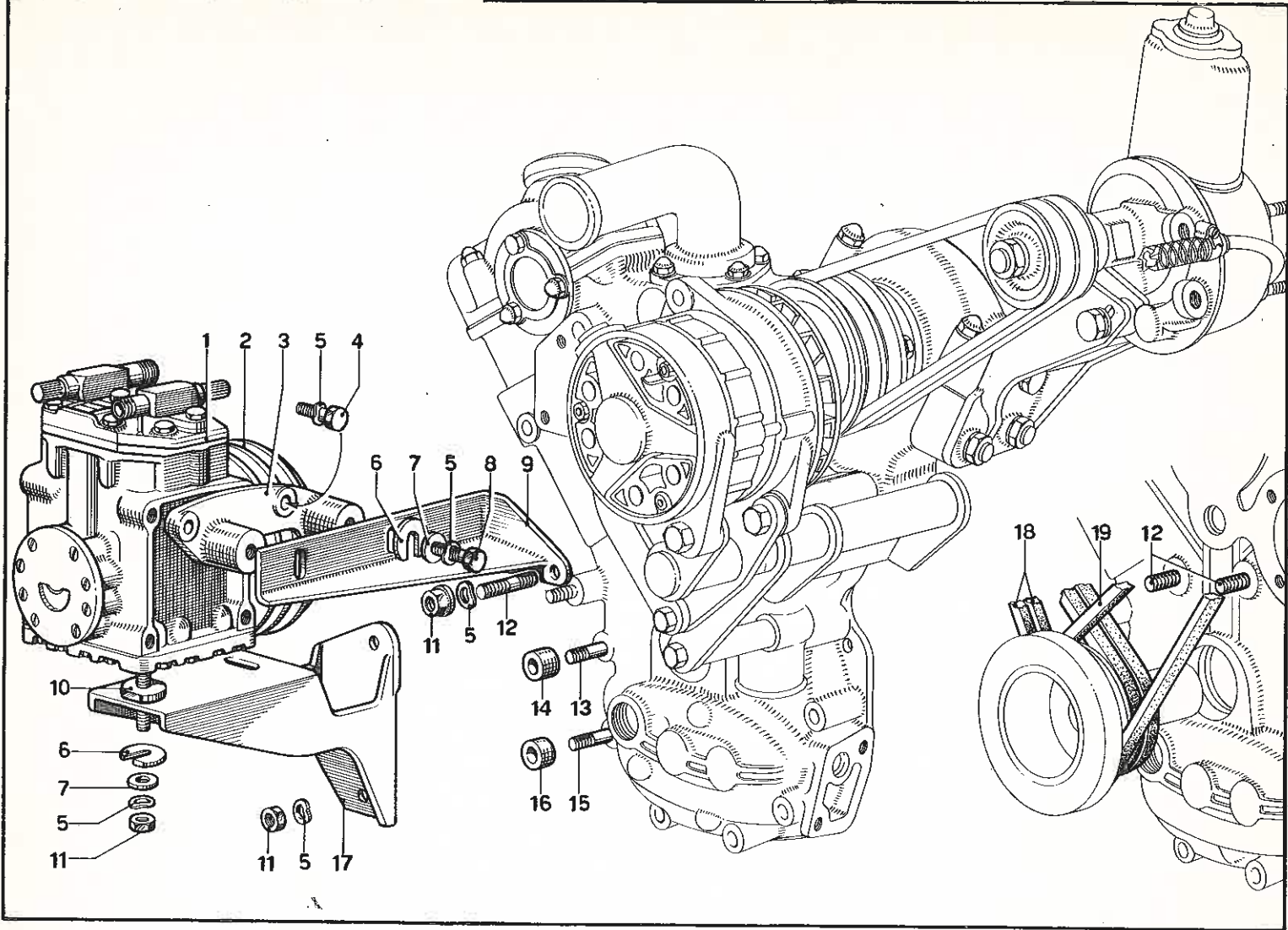


TAV. 41 - RADIATORE E POMPA ACQUA



TAV. 42 - SERBATOIO CARBURANTE







TAV. 45 - DOTAZIONE ATTREZZI

